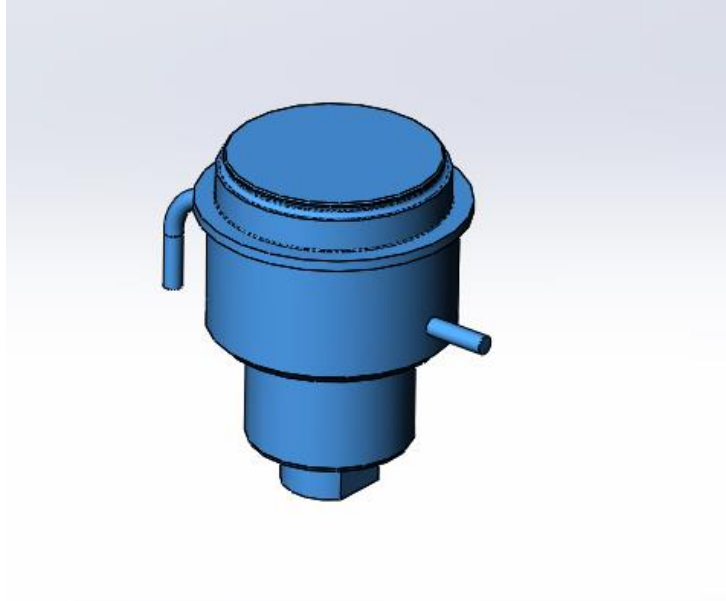


Step 1: Download files.

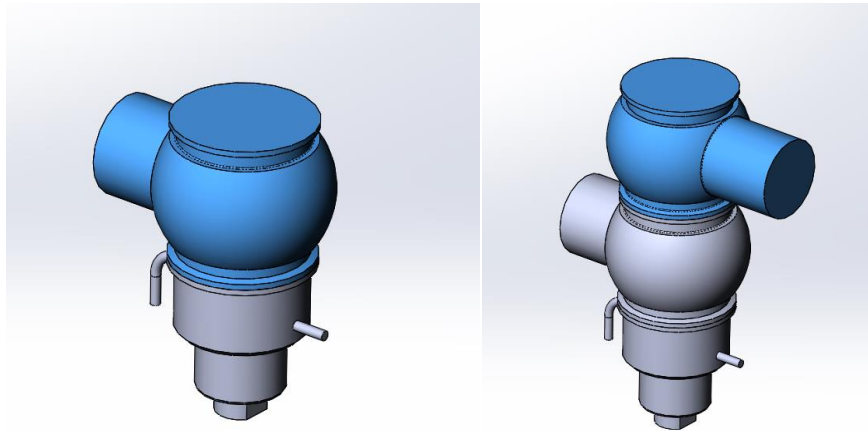
- (1) lower adapter, (1) actuator, (1) control top – If Applicable, (1) fitting – If Applicable, (1, 2, or 3) bodies

Step 2: Place lower adapter into assembly file and fix position.

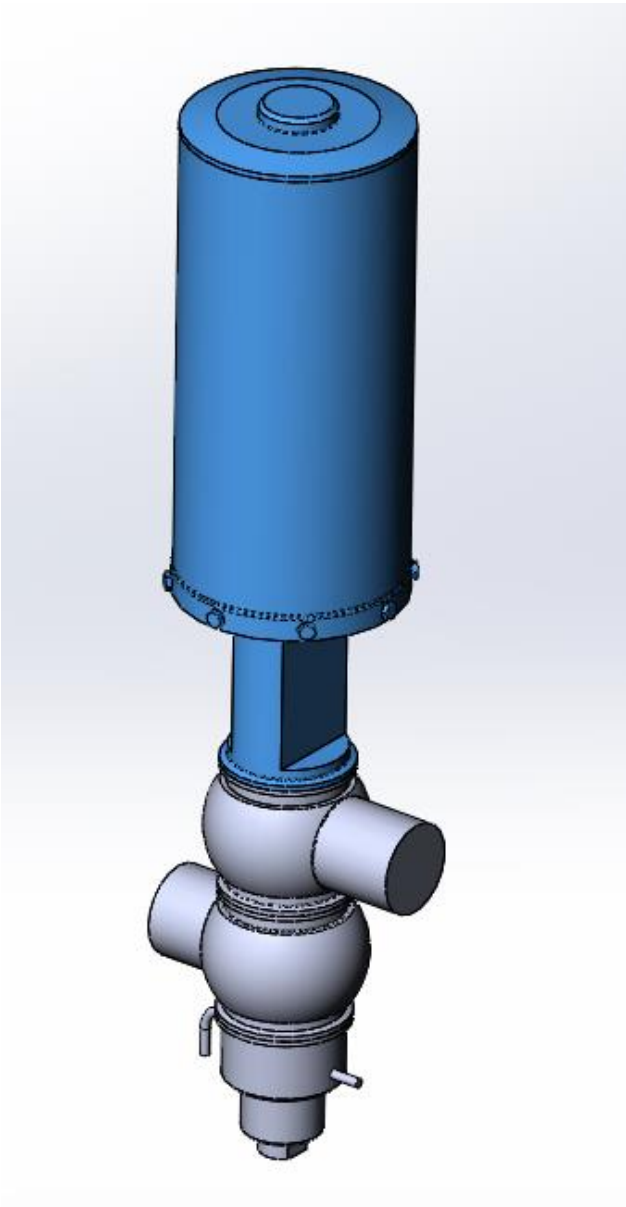


Step 3: Place and orient next body(ies) if the valve has multiple bodies.

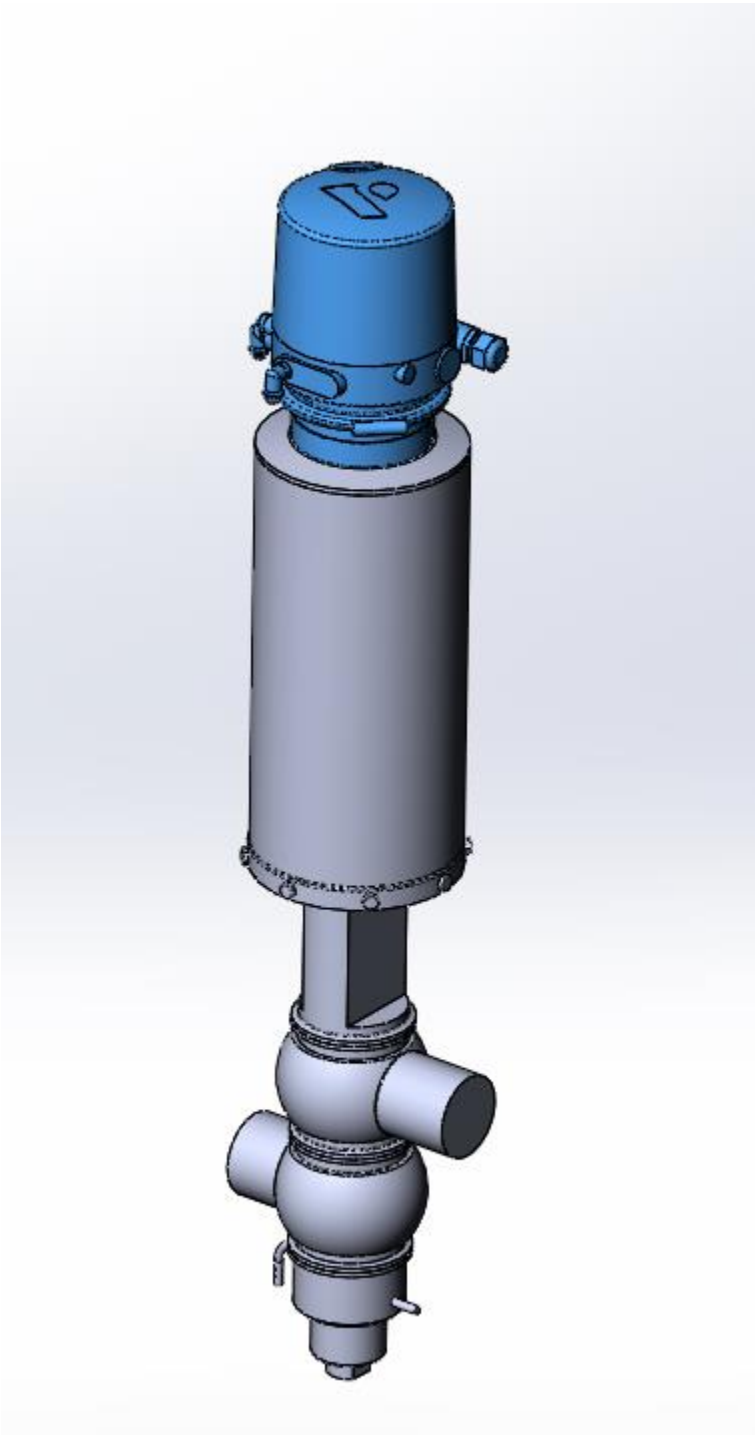
- If it is a single body, skip to step 4.



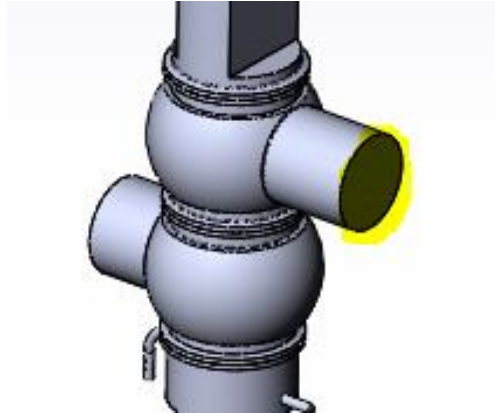
Step 4: Place and orient the actuator.



Step 5: Place and orient the control top (if applicable).



Step 6: Add fittings to the ports (if applicable).



Step 8: Verify port-to-port dimensions by comparing to dimensional tables in DS-1221.

**PRODUCT DIMENSIONS**

**Shut-Off**

VALVE SIZE INCH (mm)	A*	B	C	E*
1.5 (38)	16.6 (422)	2.63 (67)	4.0 (102)	3.5 (89)
2.0 (51)	17.0 (432)	3.13 (80)	4.0 (102)	3.9 (99)
2.5 (64)	17.4 (442)	3.63 (92)	4.0 (102)	4.6 (117)
3.0 (76)	17.6 (447)	4.13 (105)	4.0 (102)	4.9 (124)
4.0 (102)	18.0 (457)	5.13 (130)	6.0 (152)	5.8 (147)

\* A & E dimensions shown without optional lower stem flush

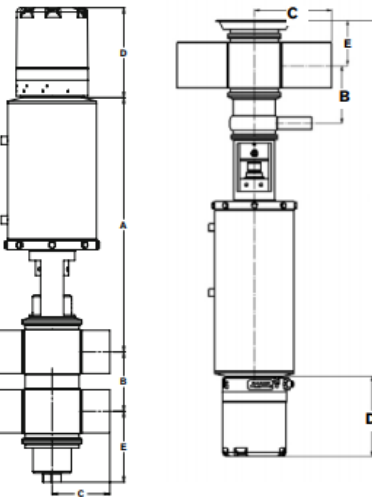
**Particulate**

VALVE SIZE INCH (mm)	A*	B	C	E*
3.0 (76)	36.6 (930)	5.13 (130)	6.0 (152)	---
4.0 (102)	36.6 (930)	5.13 (130)	6.0 (152)	---

\* A & E dimensions shown without optional lower stem flush

**Tank Outlet**

VALVE SIZE TUBE OD INCH (mm)	A	B	C	E
2.5 (64)	20.5 (521)	4.0 (102)	4.0 (102)	3.0 (76)
3.0 (76)	20.9 (531)	4.3 (109)	4.0 (102)	3.3 (82)
4.0 (102)	21.9 (556)	4.8 (122)	6.0 (152)	3.8 (97)



**Control Top Dimensional Adder**

CONTROL TOP	ADDER DIMENSION D INCH (mm)
WCB	6.25 (160)
2661	9.50 (241)
CU4	7.50 (190)

Note 1: A - dimension with seat lift actuator.  
 Note 2: A & E - Dimensions are with standard lower housing. For dimensions with lower flush housing, contact factory.  
 Note 3: F Dimension - Minimum clearance above valve required for valve removal.  
 Note 4: All dimensions in OD tube sizes. For schedule 5 size dimensions, see instruction manual 95-03091.  
 Air ports on actuator are 1/8" NPT. External flush/steam connection for upper stem & vent cavity is 1/4" NPT.  
 Lower stem flush connection is 1/4" Tube OD.