

› Power Team®

# PANCAKE LOCKING COLLAR CYLINDERS

**RGP Series — Single acting, pancake locking collar**  
Ideal for heavy lifting in confined spaces



SPXFLOW®

# PANCAKE LOCKING COLLAR CYLINDERS

## SAFETY AND DURABILITY FOR YOUR HEAVY LIFTING

**SPX FLOW brand Power Team specializes in high-pressure hydraulic technology. Through a broad range of leading-edge component parts, accessories and tools, Power Team enables the creation and upkeep of concentrated force delivery solutions that can meet any application criteria.**

**Pancake locking cylinders are ideal for tight quartered locations.**

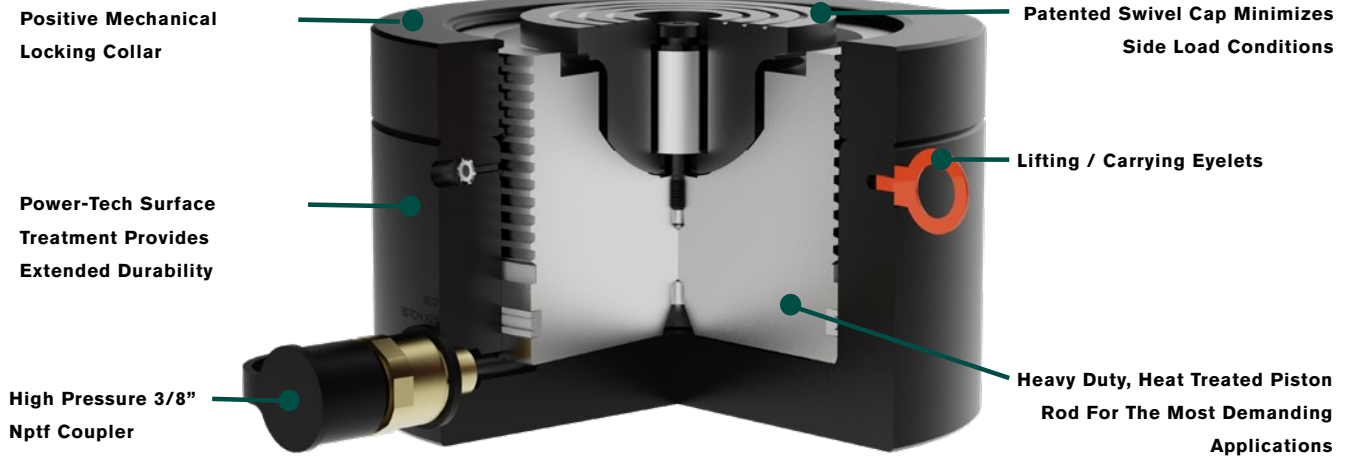


**Power Team's RGP Series of construction pancake cylinders are ideal for applications that require lifting in tight or confined spaces, such as bridge bearings on end caps or piers. The RGP Series is available with lifting capacities from 55 – 565 Tons (60,8 – 512,6 Tonne).**

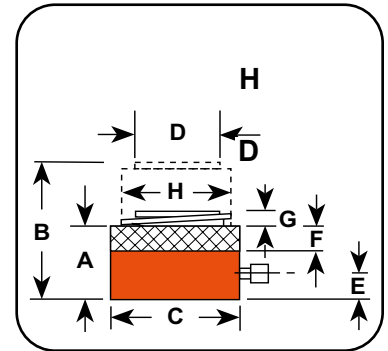
### Overview

- **Mechanical locking collar** safely supports loads for an extended period of time removing the chance of a hydraulic leak down causing a load shift.
- **Patented 5 degree deep swivel cap** concentrates loads to minimize offset conditions.
- **Buttress thread design** supports locking collar strength and security along with time saving quick run-down.
- **Power-Tech nitrocarburization surface treatment** inhibits corrosion and provides exceptional durability.
- **Weep hole** provides visual indication of piston over travel.

# Single Acting, Pancake Locking Collar



**NOTICE:** When selecting a hydraulic cylinder(s) capacity and stroke, Power Team recommends that you size to 80% of the maximum rated capacity and stroke for the application - known as the "80% Rule". This will ensure additional safety factor and extend the product performance over time.



Ton.	Stroke	Order No.	A	B	C	D	E	F	G	H	CYL. EFF. AREA (ADV.)	Oil Cap.	Internal Press At Cap.	Wt. W/O Oil
			Ret. Height	Ext. Height	DIA.	BORE DIA.	BASE TO PORT	NUT THICK.	SWVL CAP PROT.	SWVL CAP DIA.				
US	IN.		IN.	IN.	IN.	IN.	IN.	IN.	IN.	IN.	SQ. IN.	(CU. IN.)	(PSI)	(LBS.)
67	1.75	RGP672	4.78	6.53	5.80	4.13	0.86	0.88	0.03	2.78	13.36	23.39	10,027	33.5
110	1.75	RGP1102	5.21	6.96	7.00	5.38	0.89	1.13	0.04	3.87	22.69	39.71	9,696	52.3
180	1.75	RGP1802	5.82	7.57	9.00	6.75	1.05	1.38	0.10	4.63	35.78	62.62	10,060	97.2
220	1.75	RGP2202	6.17	7.92	10.00	7.50	1.11	1.60	0.10	5.37	44.18	77.31	9,960	127.2
280	1.75	RGP2802	6.27	8.02	11.00	8.50	1.20	1.65	0.10	5.56	56.74	99.30	9,869	155.2
430	1.75	RGP4302	7.00	8.75	14.00	10.50	1.55	1.88	0.10	6.66	86.59	151.53	9,932	282.5
565	1.75	RGP5652	7.60	9.35	16.00	12.00	1.84	2.10	0.25	7.77	113.09	197.91	9,992	398.7



SPX FLOW, Inc. reserves the right to incorporate our latest design and material changes without notice or obligation. Design features, materials of construction and dimensional data, as described in this bulletin, are provided for your information only and should not be relied upon unless confirmed in writing. Please contact your local sales representative for product availability in your region. The green "➤" is a trademark of SPX FLOW, Inc.

For more information, visit [www.spxflow.com/powerteam](http://www.spxflow.com/powerteam)

P: (800) 541-1418 ▪ E: [info@powerteam.com](mailto:info@powerteam.com) | 5885 11th Street ▪ Rockford, IL 61109 U.S.A

PT\_RGP\_US | VERSION 04/2022 | COPYRIGHT © 2022 SPX FLOW, Inc.