

AC & DC Power Units

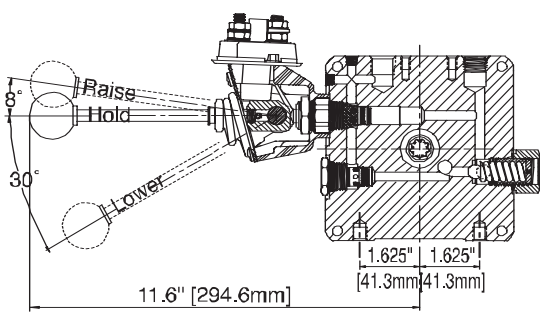
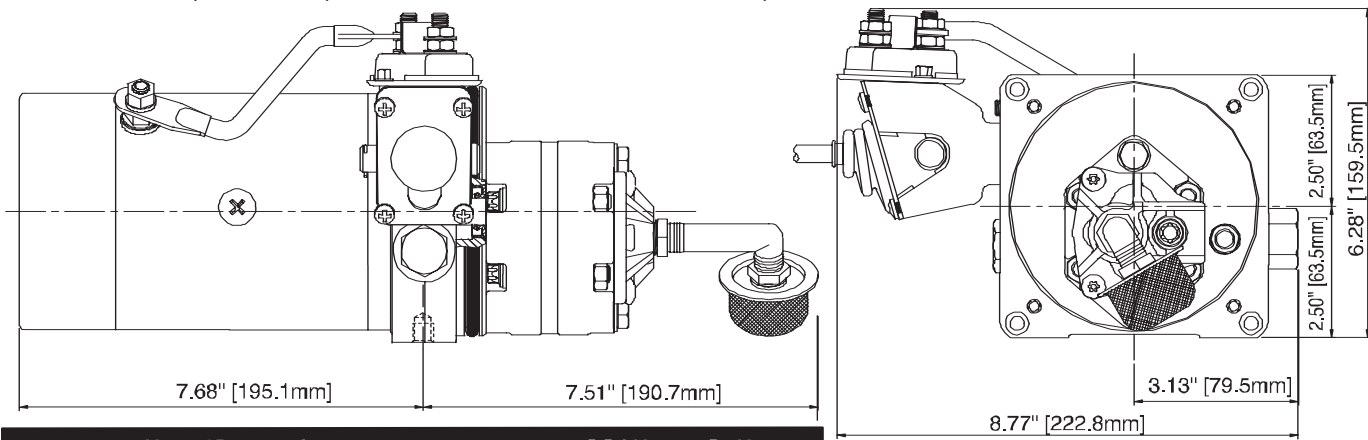
Kit Number	Description	Page Number
DC-10SF*	12V DC Manual Operated Power Up/Gravity Down	Page 96
DC-20SF*	12V DC Solenoid Operated Power Up/Gravity Down	Page 97
DC-30SF*	12V DC Check & Relief Valve Power Unit	Page 98
DC-41DT	12V DC Solenoid Operated Power Up/Power Down	Page 99
DC-50SF*	12V DC Manual Operated Power Up/Power Down	Page 100
DC-60SF*	12V DC Solenoid Operated Power Up/Power Down	Page 101
DC-62SF*	12V DC Solenoid Operated Dual Power Up/Power Down	Page 102
DC-70SF*	12V DC Solenoid Operated Power Up/Power Down	Page 103
DC-90SF*	12V DC Relief Valve Only	Page 104
AC-10AH	230V AC 1PH Auto Hoist 2-Post Lift Power Up/Gravity Down	Page 105
AC-10KS	230V AC 1PH Auto Hoist 2-Post Lift With Kill Switch Power Up/Gravity Down	Page 106
AC-10FP	230V AC 1PH Auto Hoist 4-Post Lift Power Up/Gravity Down	Page 107
AC-10TC	115V AC 1PH Tire Changer Power Up/Gravity Down	Page 108
AC-20ML	115V AC 1PH Man Lift Power Up/Gravity Down	Page 109
AC-40FC	115V AC 1ph Filter Crusher Power Extend/Gravity Return	Page 110
DC-20MH	12V DC Material Handling Solenoid Operated Power Up/Gravity Down	Page 111
DC-20ML	12V DC Man Lift Solenoid Operated Power Up/Gravity Down	Page 112
DC-24MH	24V DC Material Handling Solenoid Operated Power Up/Gravity Down	Page 113
DC-30APU	12V DC Auxiliary Power Unit Relief & Check Valve Only	Page 114
DC-70BS	12V DC Bale Spike Solenoid Operated Power Up/Power Down	Page 115
DC-80SP	12V DC Snow Plow Solenoid Operated Power Angle & Lift/Gravity Down	Page 116

* Can be assembled using standard Pick-A-Pack parts. Can be made into metric by using KN10 endhead.

DC-10SF

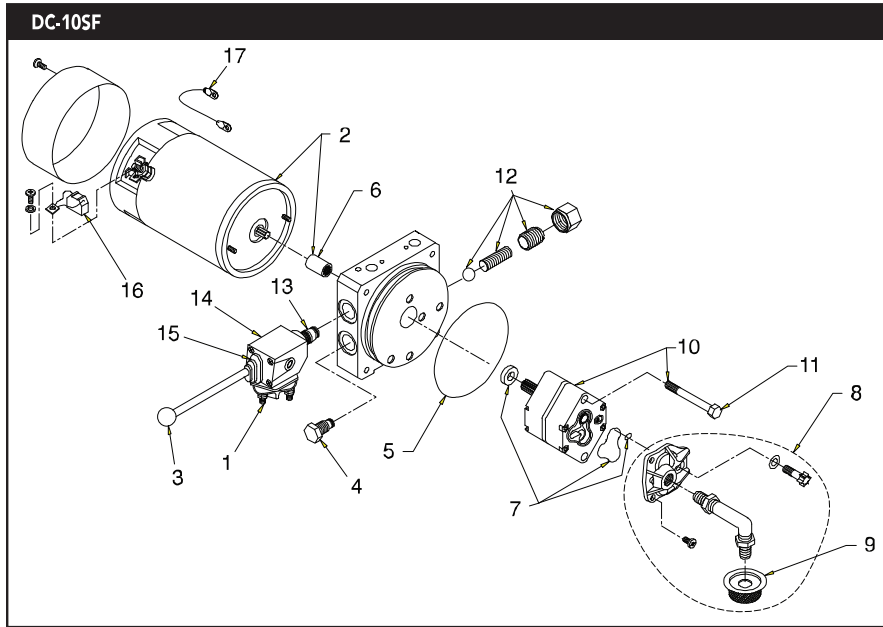
12V DC MANUAL OPERATED POWER UP/GRAVITY DOWN

This unit is for power up-hold-gravity down applications. In one direction the manual handle starts unit to power up. In the other direction, the manual handle provides gravity down. In the neutral position, the unit holds steady. The unit features an adjustable relief valve, cartridge hold & lower valves, allowing for easy field service & interchangeability. A pressure compensated flow control for lower function is optional.



ENDHEAD SECTION

UNIT SPECIFICATION		HYDRAULIC CIRCUIT
Motor	12V DC 1 Terminal Std. Duty Corrosion Resistant Plate Finish	
Pump	AFC 2.0 CC/Rev. (.122 Cu. In/Rev.)	
Relief	Adj. Set At 2500 PSI (172.4 Bar)	
Endhead (KN11*)	3/8 NPTF Pressure-Return Port (2) 3/8-16 X .38 Deep Mtg. Hole	
Tank	None	
Valving	Check Valve - Manually Operated Release Valve	
Wiring	12V To Solenoid Start Switch	

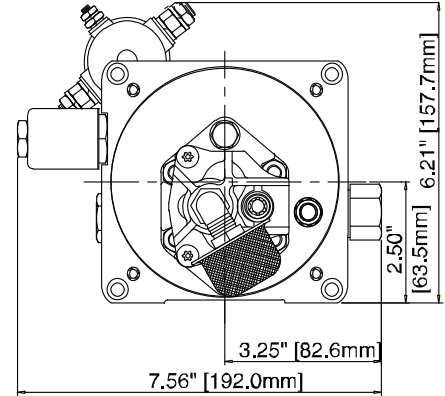
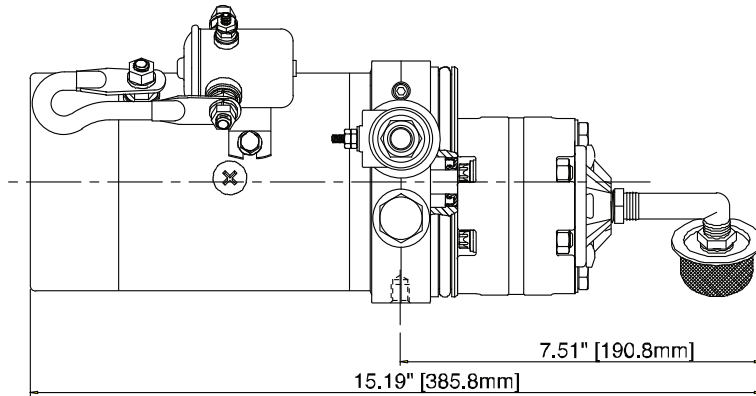


ITEM	DESCRIPTION	P/N	QTY.
1	Start Switch 12V DC	3865-AB	1
2	DC Motor 12V 1T Std Duty	KMD1	1
3	Handle Assembly	S9-1001-14	1
4	Valve Cartridge Check	2507-AA	1
5	Reservoir O-Ring	G1-1073-48	1
6	Coupling	1118-AA	1
7	Pump O-Ring Kit	K-40	1
8	Inlet Plumbing Kit	KH	1
9	Filter	1611-AA	1
10	Pump Assy.	KP20	1
11	Pump Mounting Bolt	F1-1053-00	2
12	Adj. Relief Valve Assy.	RV-2	1
13	Manual Release Valve	VF-9021	1
14	Bracket Assy. Finish	K-106	1
15	Start Switch Boot	3148-AB	1
16	Motor Brush Kit	K-90	1
17	Terminal Strap Electric	1967-AB	1

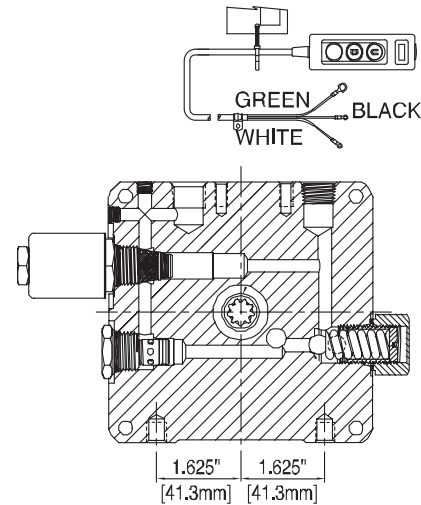
* Substitute KN10 for metric

12V DC SOLENOID OPERATED POWER UP/GRAVITY DOWN

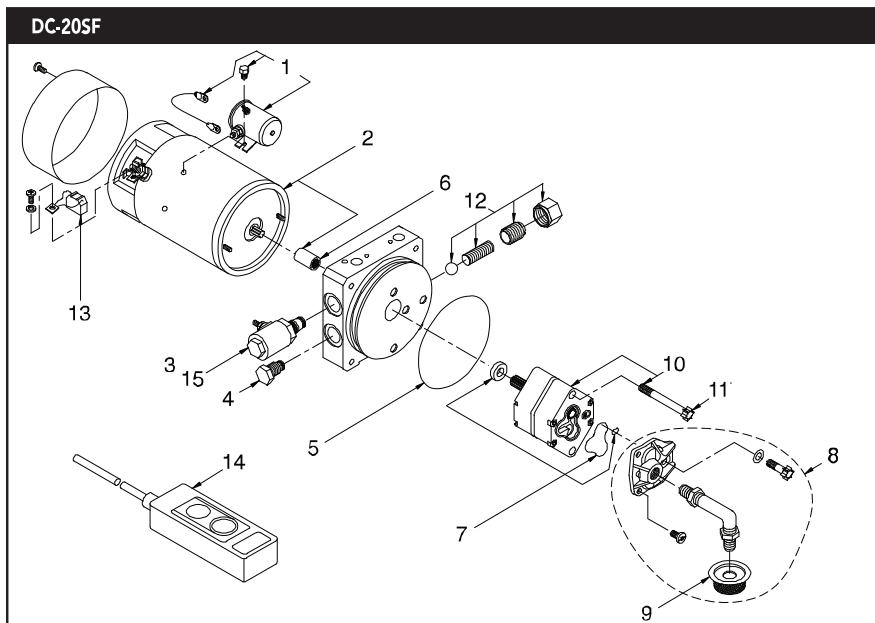
This unit is for power up-hold-gravity down applications. The remote controller allows an operator to power up & gravity down the unit. In the off position, the unit holds steady. The unit features an adjustable relief valve, cartridge hold & lower valves, allowing for easy field service & interchangeability. A pressure compensated flow control for lower function is optional.



UNIT SPECIFICATION		HYDRAULIC CIRCUIT
Motor	12V DC 1 Terminal Std. Duty Corrosion Resistant Plate Finish	
Pump	AFC 2.0 CC/Rev. (.122 Cu. In/Rev.)	
Relief	Adj. Set At 2500 PSI (172.4 Bar)	
Endhead	3/8 NPTF Pressure-ReturnPort (2) 3/8-16 X .38 Deep Mtg. Hole	
Tank	None	
Valving	Check Valve/12V DC Solenoid- Operated NC Valve	
Wiring	12V DC To Start Switch & To N.C. Valve Solenoid	



ENDHEAD SECTION

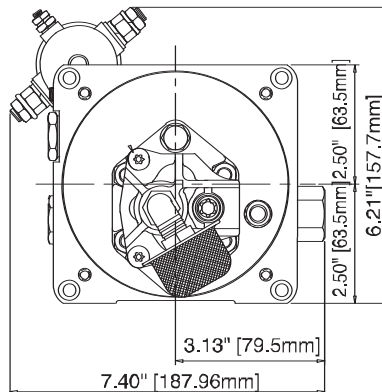
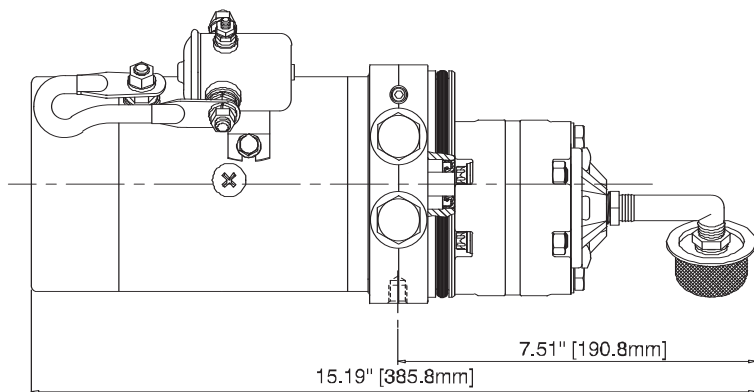


ITEM	DESCRIPTION	P/N	QTY.
1	Solenoid Starter 12V	KS1	1
2	DC Motor 12V	KMD1	1
3	Valve NC 12V DC	VF-4009	1
4	Valve Cartridge Check	2507-AA	1
5	Reservoir O-Ring	G1-1073-48	1
6	Coupling	1118-AA	1
7	Pump O-Ring Kit	K-40	1
8	Inlet Plumbing Kit	KH	1
9	Filter	1611-AA	1
10	Pump Assembly	KP20	1
11	Pump Mounting Bolt	F1-1053-00	2
12	Adj. Relief Valve Assy.	RV-2	1
13	Motor Brush Kit	K-90	1
14	Electric Switchbox	KG11	1
15	Solenoid Coil 12V DC	EF-1082	1

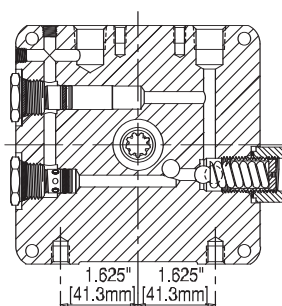
DC-30SF

12V DC CHECK & RELIEF VALVE POWER UNIT

This unit provides flow & pressure for customer specific applications. The unit can be used for power up-hold-gravity down, or power up-hold-power down applications, dependent on customer-supplied valving. Features include an adjustable relief valve & cartridge check valve.



UNIT SPECIFICATION		HYDRAULIC CIRCUIT
Motor	12V DC 1 Terminal Std. Duty Corrosion Resistant Plate Finish	
Pump	AFC 2.0 CC/Rev. (.122 Cu. In/Rev.)	
Relief	Adj. Set At 2500 PSI (172.4 Bar)	
Endhead	3/8 NPTF Pressure-Return Port (2) 3/8-16 X .38 Deep Mtg. Hole	
Tank	None	
Valving	Check Valve	
Wiring	12V To Solenoid Start Switch	



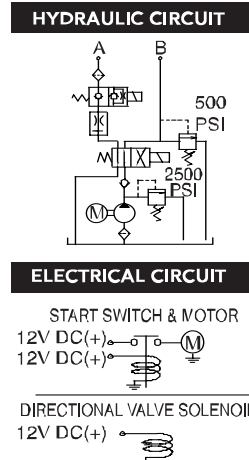
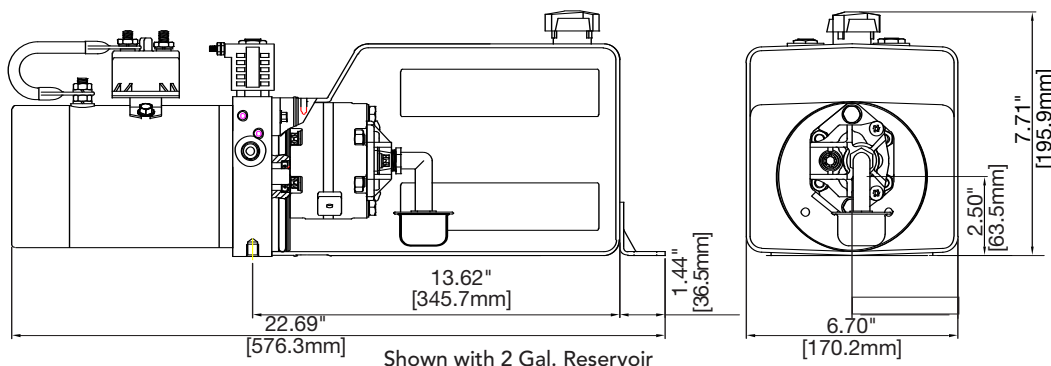
ENDHEAD SECTION

DC-30SF	ITEM	DESCRIPTION	P/N	QTY.
	1	Solenoid Starter 12V	KS1	1
	2	DC Motor 12V	KMD1	1
	3	Valve Plug Two Way	2780-BA	1
	4	Valve Cartridge Check	2507-AA	1
	5	Reservoir O-Ring	G1-1073-48	1
	6	Coupling	1118-AA	1
	7	Pump O-Ring Kit	K-40	1
	8	Inlet Plumbing Kit	KH	1
	9	Filter	1611-AA	1
	10	Pump Assy.	KP20	1
	11	Pump Mounting Bolt	F1-1053-00	2
	12	Adj. Relief Valve Assy.	RV-2	1
	13	Motor Brush Kit	K-90	1

* Substitute KN10 for metric

12V DC SOLENOID OPERATED POWER UP/POWER DOWN

This unit is for power up-hold-power down applications. The controller (either customer-supplied or supplied with unit) will power the unit in both directions. The unit will hold load in the off position. Pressure compensated flow control allows smooth-running functions in both directions. Features include an adjustable relief valve & cartridge valves for easy field service & interchangeability.



DC-41DT		ORDERING GUIDE			
		Pump	Reservoir	Fixed Low Relief	Fixed High Relief
C	-	20	15P	5	20
Blank	No Controller	16	10P	1 = 100 PSI (6.9 Bar)	20 = 2000 PSI (137.6 Bar)
C	With Controller	20	10S	3 = 300 PSI (20.6 Bar)	25 = 2500 PSI (172 Bar)
Example listing: DC-41DTC-20-15P-5-20		25	15P	5 = 500 PSI (34.4 Bar)	30 = 3000 PSI (206.4 Bar)
Standard Features on DC-41DT family:		31	15S	8 = 800 PSI (55 Bar)	35 = 3500 PSI (240.9 Bar)
12V DC 1 Terminal Std Duty Motor		20P			
12V DC Int Duty Start Solenoid		20S			
10V DC 2P4W direction valving		Example: 25	25S	Low Relief can be set from 100 - 800 PSI	High Relief can be set from 2000 - 3500 PSI
10V DC 2P2W load hold valve		(.153 Cu. In/Rev.)	30P	in increments of 100	in increments of 100
2.5 GPM Flow control		30S			
Horizontal mount plumbing SAE Ports		Example: 10P = 1 Gal. Plastic 25S = 2.5 Gal. Steel			

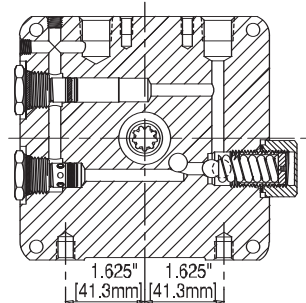
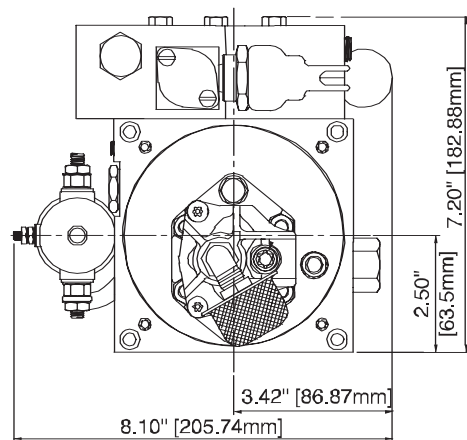
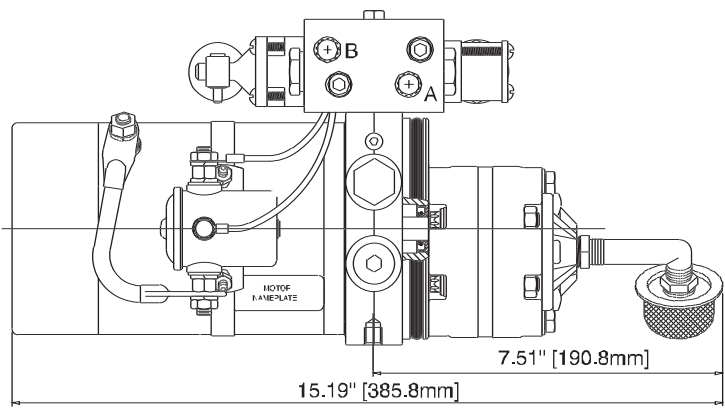
DC-41DT	ITEM	DESCRIPTION	P/N	QTY.
	1	Start Switch 12VDC	4795-AA	1
	2	DC Motor 12V	KMD1	1
	3	2P2W NC Valve	VF-4009	1
	4	Plug	T1-1019-05	2
	5	Battery Cable	1967-AB	1
	6	Low PSI Relief Kit	K-424	1
	7	Reservoir O-Ring	G1-1073-48	1
	8	Coupling	1118-AA	1
	9	Pump O-Ring Kit	K-40	1
	10	Inlet Plumbing Kit	KH	1
	11	Filter	1611-AA	1
	12 *	Pump Assy.	KP25	1
	13	Pump Mounting Bolt	F1-1053-00	2
	14 *	Reservoir	5310-AC	1
	15	Reservoir Screw	3346-AA	1
	16	Breather	8060-CC	1
	17	High PSI Relief Valve Kit	K-425	1
	18	Solenoid Coil 10VDC #8-32	EF-1142	2
	19	Motor Brush Kit	K-90	1
	20	Check Valve Kit	K-420	1
	21	Valve Body 2P4W	VF-6004	1
	22	Flow Control	FC-2.5	1
	23	Electric Switchbox †	3832-AC	1

* Will vary depending on model selection. † DC-41DTC only

DC-50SF

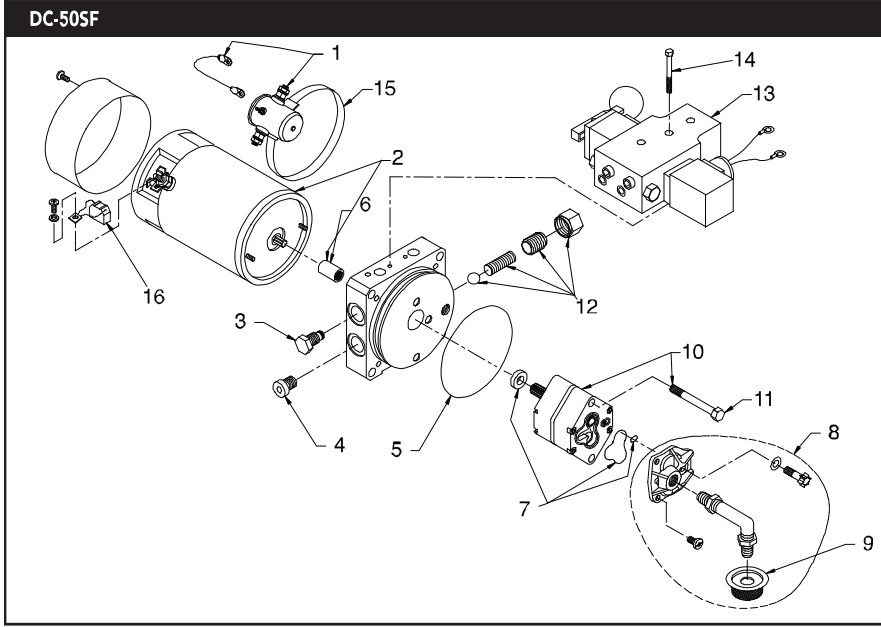
12V DC MANUAL OPERATED POWER UP/POWER DOWN

This unit is for power up-hold-power down applications. The manually operated directional valve powers the unit in both directions. In the neutral position the unit is off & holds steady. Features include an adjustable relief valve & load-holding P.O. check valve.



ENDHEAD SECTION

UNIT SPECIFICATION		HYDRAULIC CIRCUIT
Motor	12V DC 1 Terminal Std. Duty Corrosion Resistant Plate Finish	
Pump	AFC 2.0 CC/Rev. (.122 Cu. In/Rev.)	
Relief	Adj. Set At 2500 PSI (172.4 Bar)	
Endhead (KN11*)	1/4 NPTF PORTS "A" & "B" (2) 3/8-16 X .38 Deep Mtg. Hole	
Tank	None	
Valving	3P4W Manually Operated Valve W/Single PO Check Valve On Port "B"	
Wiring	12V To Solenoid Start Switch	

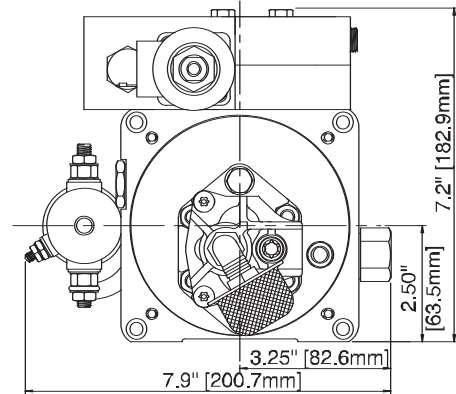
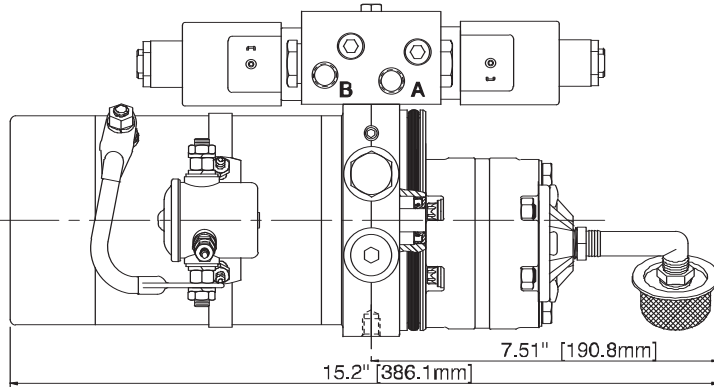


ITEM	DESCRIPTION	P/N	QTY.
1	Solenoid Starter 12V	KS1	1
2	DC Motor 12V	KMD1	1
3	Valve Plug, Two Way	2780-AA	1
4	Plug, 3/4-16 SAE	1441-AA	1
5	Reservoir O-Ring	G1-1073-48	1
6	Coupling	1118-AA	1
7	Pump O-Ring Kit	K-40	1
8	Inlet Plumbing Kit	KH	1
9	Filter	1611-AA	1
10	Pump Assy.	KP20	1
11	Pump Mounting Bolt	F1-1053-00	2
12	Adj. Relief Valve Assy.	RV-2	1
13	U-Valve 4W3P CCCP Manual	KDV3	1
14	Bolt 1/4-20X2.375 Hexhead	F2-1032-38	3
15	Solenoid Band Kit	K-105	1
16	Motor Brush Kit	K-90	1

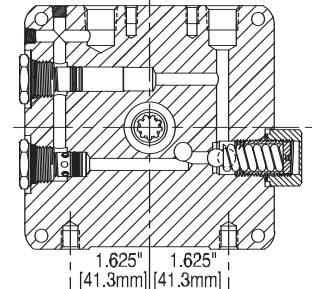
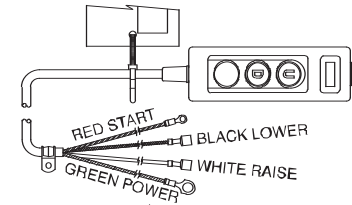
* Substitute KN10 for metric

12V DC SOLENOID OPERATED POWER UP/POWER DOWN

This unit is for power up-hold-power down applications. The controller allows an operator to power the unit in both directions. In the off position, the unit holds steady. Features include an adjustable relief valve & load-holding P.O. check valve.



UNIT SPECIFICATION		HYDRAULIC CIRCUIT
Motor	12V DC 1 Terminal Std. Duty Corrosion Resistant Plate Finish	
Pump	AFC 2.0 CC/Rev. (.122 Cu. In/Rev.)	
Relief	Adj. Set At 2500 PSI (172.4 Bar)	
Endhead (KN11*)	1/4 NPTF Ports "A" & "B" (2) 3/8-16 X .38 Deep Mtg. Hole	
Tank	None	
Valving	3P4W Solenoid Operated Valve W/Single PO Check Valve On Port "B"	
Wiring	12V DC To Start Switch & To U-Valve Solenoids	



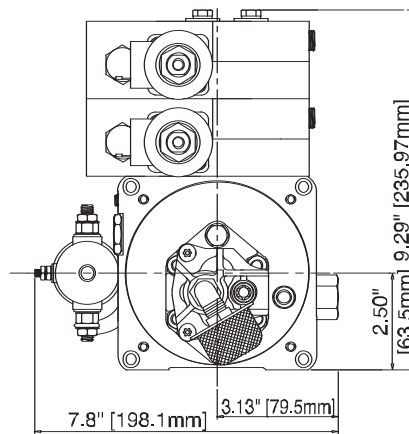
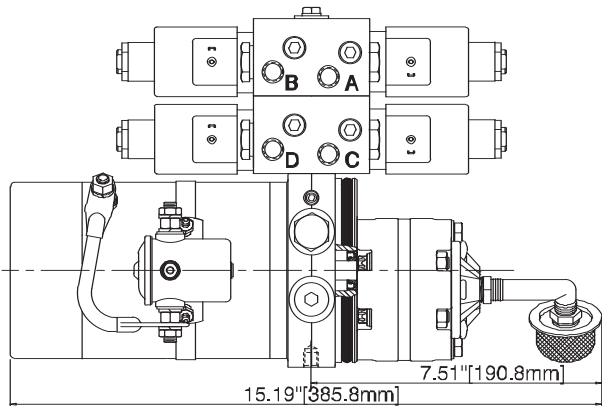
ENDHEAD SECTION

DC-60SF	ITEM	DESCRIPTION	P/N	QTY.
	1	Solenoid Starter Assy. 12V	KS1	1
	2	DC Motor 12V	KMD1	1
	3	Valve Plug, Two Way	2780-AA	1
	4	Plug, 3/4-16 SAE	1441-AA	1
	5	Reservoir O-Ring	G1-1073-48	1
	6	Coupling	1118-AA	1
	7	Pump O-Ring Kit	K-40	1
	8	Inlet Plumbing Kit	KH	1
	9	Filter	1611-AA	1
	10	Pump Assy.	KP20	1
	11	Pump Mounting Bolt	F1-1053-00**	2
	12	Adj. Relief Valve Assy.	RV-2	1
	13	U-Valve 4W3P CCCP	KDV4	1
	14	Bolt 1/4-20X2.375 Hexhead	F1-1032-50	3
	15	Solenoid Assy. DC	E1-4005-12	2
	16	Solenoid Band Kit	K-105	1
	17	Motor Brush Kit	K-90	1
	18	Electric Switchbox	KG13	1
		U-Valve O-Ring Kit	K-42	1

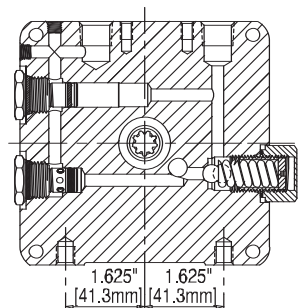
DC-62SF

12V DC SOLENOID OPERATED DUAL POWER UP/POWER DOWN

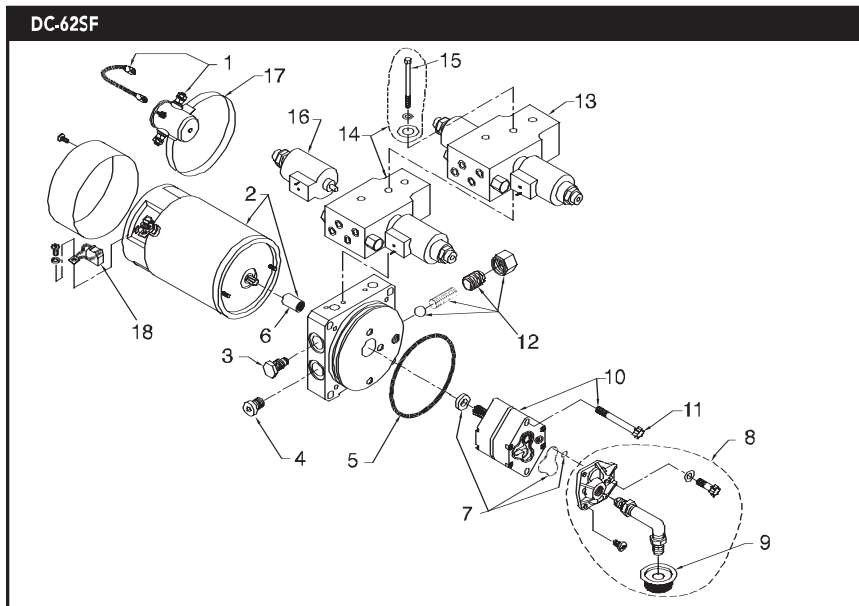
This unit is for dual power up-hold-power down applications. The customer-supplied controller will power the unit in both directions. In the off position, the unit holds steady. Directional valves run independently of each other, allowing for two separate system functions. Features include an adjustable relief valve & load-holding P.O. check valve.



UNIT SPECIFICATION		HYDRAULIC CIRCUIT
Motor	12V DC 1 Terminal Std. Duty Corrosion Resistant Plate Finish	
Pump	AFC 2.0 CC/Rev. (.122 Cu. In/Rev.)	
Relief	Adj. Set At 2500 PSI (172.4 Bar)	
Endhead (KN11*)	1/4 NPTF Ports "A", "B", "C" & "D", (2) 3/8-16 X .38 Deep Mtg. Hole	
Tank	None	
Valving	(2) 3P4W Solenoid Operated Valve W/P.O. Check Valves On Port "B" & "D"	
Wiring	12V To Solenoid Start Switch & To U-Valve Solenoids	



ENDHEAD SECTION

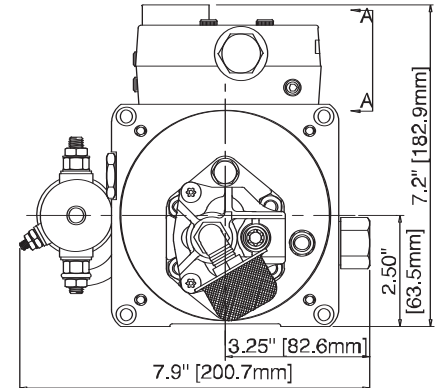
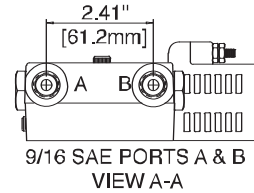
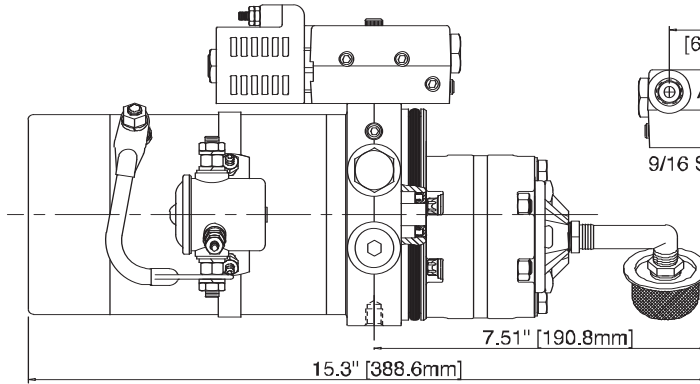


ITEM	DESCRIPTION	P/N	QTY.
1	Solenoid Starter 12V	KS1	1
2	DC Motor 12V	KMD1	1
3	Valve Plug, Two Way	2780-AA	1
4	Plug, 3/4-16 SAE	1441-AA	1
5	Reservoir O-Ring	G1-1073-48	1
6	Coupling	1118-AA	1
7	Pump O-Ring Kit	K-40	1
8	Inlet Plumbing Kit	KH	1
9	Filter	1611-AA	1
10	Pump Assy.	KP20	1
11	Pump Mounting Bolt	F1-1053-00	2
12	Adj. Relief Valve Assy.	RV-2	1
13	U-Valve 4W3P CCCP	KDV4	1
14	U-Valve 4W3P CCCP 12V Bot.	KDV1	1
15	Bolt 1/4-20X2.375 Hexhead	F1-1034-50	3
16	Solenoid Assy DC	E1-4005-12	4
17	Solenoid Band Kit	K-105	1
18	Motor Brush Kit	K-90	1
	U-Valve O-Ring Kit	K-42	1

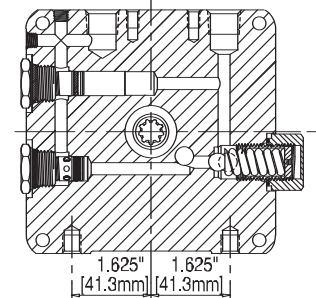
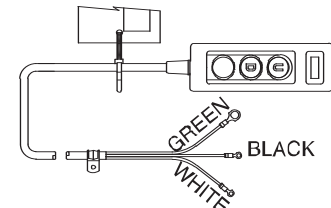
* Substitute KN10 for metric

12V DC SOLENOID OPERATED POWER UP/POWER DOWN

This unit is for power up-hold-power down applications. The controller allows an operator to power the unit in both directions. In the off position, the unit holds steady. Features include an adjustable relief valve & load-holding P.O. check valves. A cartridge directional valve is also included, for easy field service & interchangeability.



UNIT SPECIFICATION		HYDRAULIC CIRCUIT
Motor	12V DC 1 Terminal Std. Duty Corrosion Resistant Plate Finish	
Pump	AFC 2.0 CC/Rev. (.122 Cu. In/Rev.)	
Relief	Adj. Set At 2500 PSI (172.4 Bar)	
Endhead (KN11*)	9/16 SAE Ports "A" & "B" (On Valve), (2) 3/8-16 X .38 Deep Mtg. Hole	
Tank	None	
Valving	2P4W Solenoid Operated Cartridge Valve W/Double PO Checks	
Wiring	12V DC To Start Switch & To A-Valve Coil	



ENDHEAD SECTION

DC-70SF	ITEM	DESCRIPTION	P/N	QTY.
	1	Solenoid Starter 12V	KS1	1
	2	DC Motor 12V	KMD1	1
	3	Valve Plug, Two Way	2780-AA	1
	4	Plug 3/4-16 SAE	1441-AA	1
	5	Reservoir O-Ring	G1-1073-48	1
	6	Coupling	1118-AA	1
	7	Pump O-Ring Kit	K-40	1
	8	Inlet Plumbing Kit	KH	1
	9	Filter	1611-AA	1
	10	Pump Assy.	KP20	1
	11	Pump Mounting Bolt	F1-1053-00**	2
	12	Adj. Relief Valve Assy.	RV-2	1
	13	Valve Manifold Assy.	KCV1	1
	14	Capscrew Skt Hd 1/4-20x 2.0	5037-AA	2
	15	12V DC 2P4W Valve	E1-1021-00	1
	16	Solenoid Band Kit	K-105	1
	17	Motor Brush Kit	K-90	1
	18	U-Valve O-Ring Kit	K-42	1
	19	Switch Box Handset	KG12	1

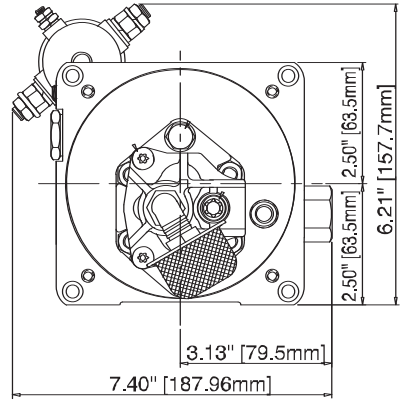
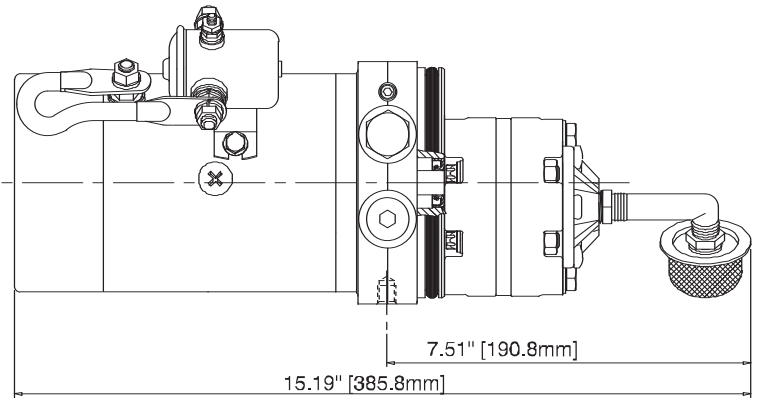
* Substitute KN10 for metric

** Older Endheads May Use M8 (Metric) Bolts Stone P/N 2825-AA

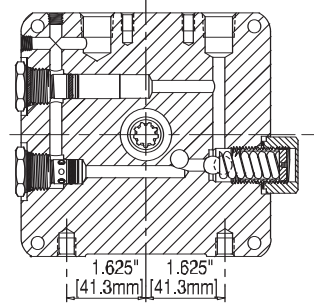
DC-90SF

12V DC RELIEF VALVE ONLY

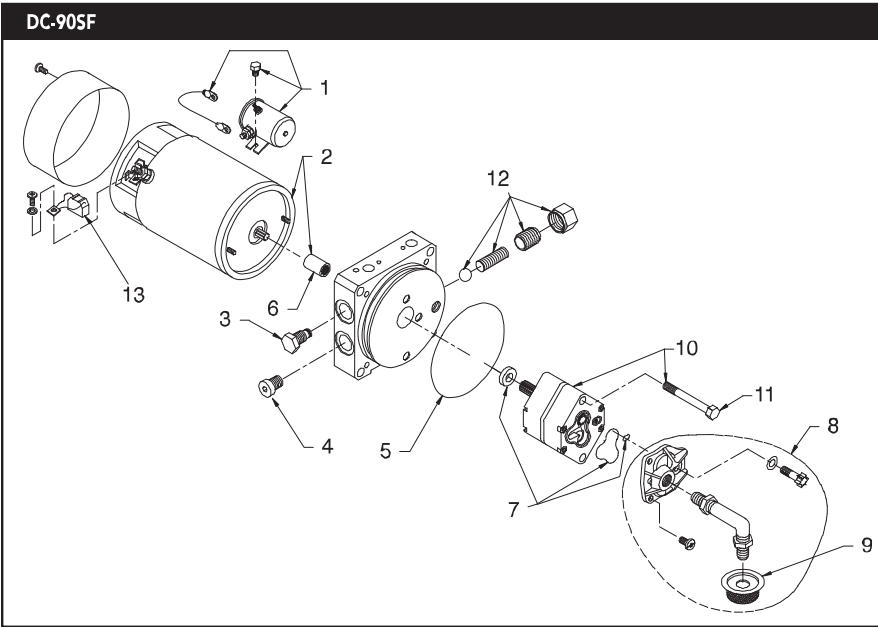
This unit provides flow & pressure for customer specific applications. The unit can be used on double acting applications. Features include an adjustable relief valve.



UNIT SPECIFICATION		HYDRAULIC CIRCUIT
Motor	12V DC 1 Terminal Std. Duty Corrosion Resistant Plate Finish	
Pump	AFC 2.0 CC/Rev. (.122 Cu. In/Rev.)	
Relief	Adj. Set At 2500 PSI (172.4 Bar)	
Endhead (KN11*)	3/8 NPTF Pressure & Return Ports (2) 3/8-16 X .38 Deep Mtg. Hole	
Tank	None	
Valving	Adj. Relief Valve	
Wiring	12V To Solenoid Start Switch	



ENDHEAD SECTION

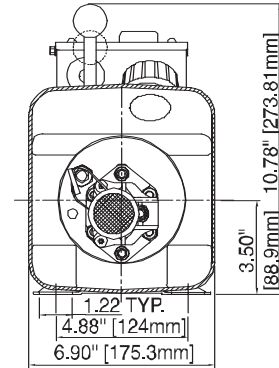
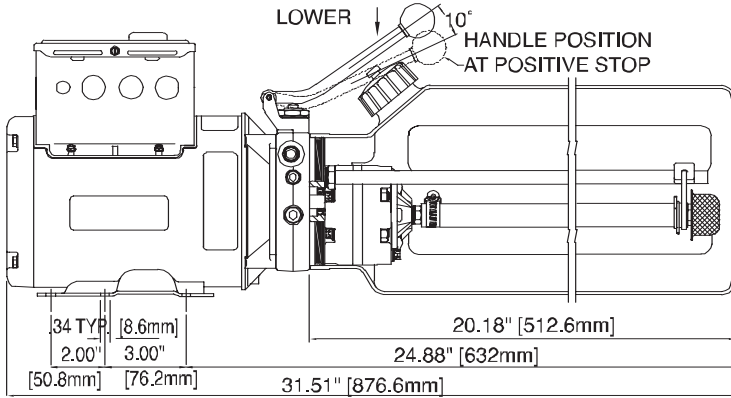


ITEM	DESCRIPTION	P/N	QTY.
1	Solenoid Starter 12V	KS1	1
2	DC Motor 12V	KMD1	1
3	Valve Plug, Two Way	2780-AA	1
4	Plug, 3/4-16 SAE	1441-AA	1
5	Reservoir O-Ring	G1-1073-48	1
6	Coupling	1118-AA	1
7	Pump O-Ring Kit	K-40	1
8	Inlet Plumbing Kit	KH	1
9	Filter	1611-AA	1
10	Pump Assy.	KP20	1
11	Pump Mounting Bolt	F1-1053-00	2
12	Adj. Relief Valve Assy.	RV-2	1
13	Motor Brush Kit	K-90	1

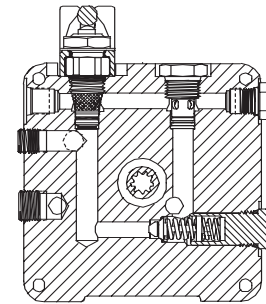
* Substitute KN10 for metric

230V AC 1PH AUTO HOIST 2-POST LIFT POWER UP/GRAVITY DOWN

This unit is for raise-hold-lower of the lift, with manual control of the lowering speed. A push-button starts the motor to raise the lift. The unit features a fixed relief valve. Cartridge valves are used, allowing easy field service & interchangeability.



UNIT SPECIFICATION		HYDRAULIC CIRCUIT
Motor	208-230V AC 3450 RPM 1PH 60 Hz.	
Pump	AFC 2.0 CC/Rev. (.122 Cu. In/Rev.)	
Relief	Fixed At 2750 PSI (191 Bar) Nominal	
Endhead	9/16-18 SAE Pressure-Return Port 3/8 NPTF Aux. Return Port (Plugged)	ELECTRICAL CIRCUIT COMMON RAISE-N.O.
Tank	4.0 U.S. Gallon Vertical Tank Down Mtg. 700 Cu. In. Useable	
Valving	Manual Release Valve (Cartridge-Style) Check Valve (Cartridge-Style)	
Wiring	230V AC To Motor Momentary "On" Switch	



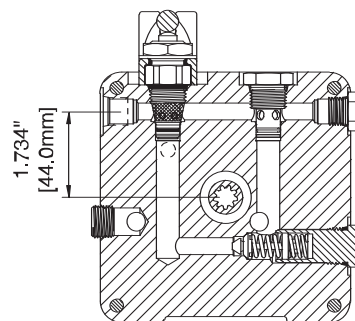
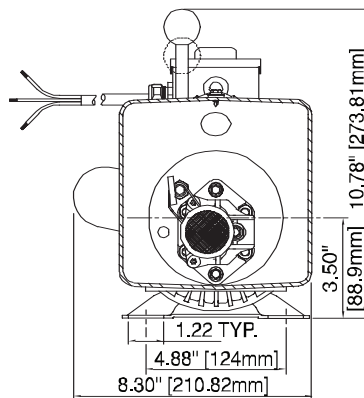
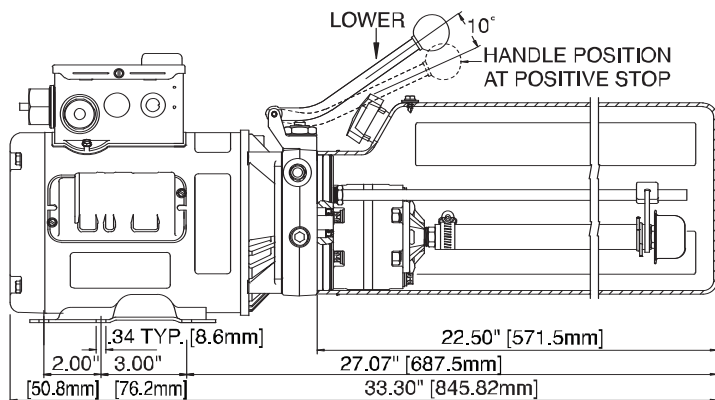
ENDHEAD SECTION

AC-10AH	ITEM	DESCRIPTION	P/N	QTY.
	1	Wiring Assy.	W-400-230	1
	2	AC Motor 208-230V 1PH	4763-AC	1
	3	M6X1.0 - 35mm SHCS	3009-AA	4
	4	Hi-Collar Lockwasher	3020-AA	4
	5	Coupling	1118-AA	1
	6	Manual Release Assy.	K-100	1
	7	Manual Release Valve	VF-9021	1
	8	Valve Cartridge Check	2507-AA	1
	9	Fixed Relief Valve	RV-19	1
	10	Relief Valve Cap	3729-AA	1
	11	Reservoir O-Ring	G1-1073-48	1
	12	Pump Assy.	KP20	1
	13	Pump Mounting Bolt	1112-AA	2
	14	Inlet Plumbing Kit	K-230	1
	15	Filter	1611-AA	1
	16	Pump O-Ring Kit	K-40	1
	17	Return Tube	5118-AA	1
	18	Breather	260185	1
	19	Reservoir	5141-AC	1
	20	Reservoir Screw	3346-AA	4
	21	Compression Tube Nut	5115-AA	1
	22	Compression Sleeve	5116-AA	1
	23	Plug Pipe 3/8 NPT	1456-AA	1
	24	Plumbing Plug	1170-AA	1
	25	Spring	4475-AA	1
	26	Plug 1/4 NPT	1215-AA	1

AC-10KS

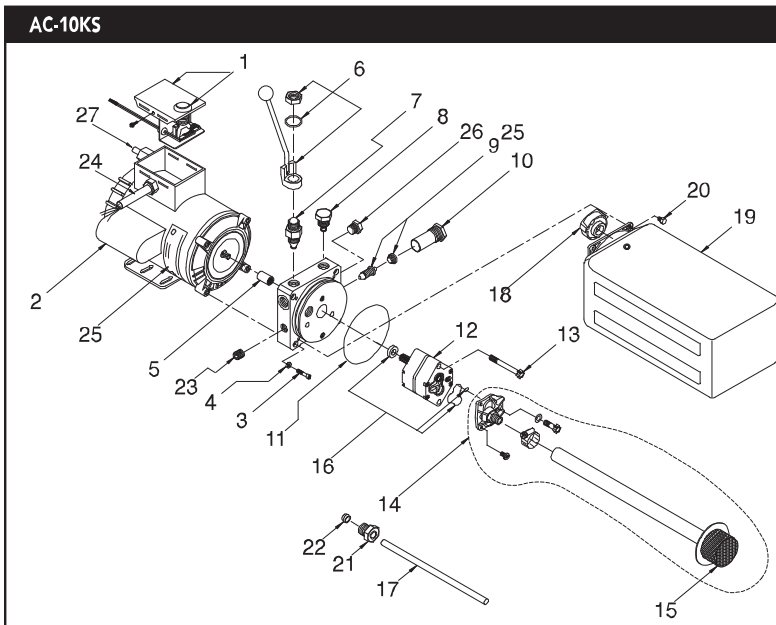
230V AC 1PH AUTO HOIST 2-POST LIFT WITH KILL SWITCH POWER UP/GRAVITY DOWN

This unit is for raise-hold-lower of the lift, with manual control of the lowering speed. A push-button starts the motor to raise the lift. The unit features a fixed relief valve. Cartridge valves are used, allowing easy field service & interchangeability.



ENDHEAD SECTION

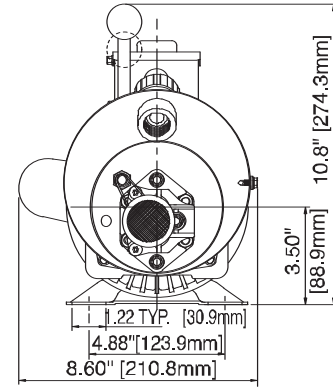
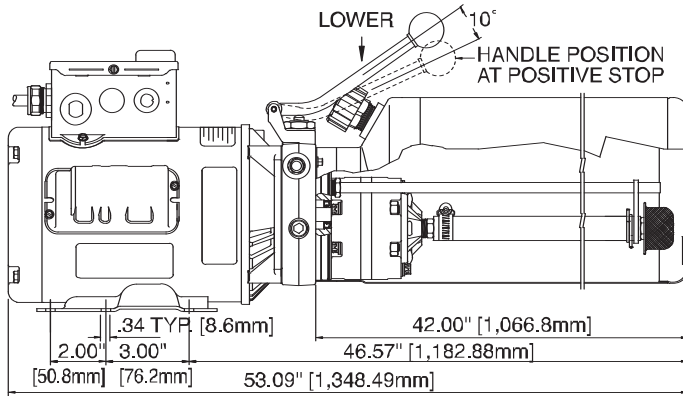
UNIT SPECIFICATION		HYDRAULIC CIRCUIT
Motor	208-230V AC 3450 RPM 1PH 60 Hz.	
Test	Dielectric Std. 2.16.15	
Pump	AFC 2.0 CC/Rev. (.122 Cu. In/Rev.)	
Relief	Fixed At 2750 PSI Nominal	
Endhead	3/8 NPT Aux. Port (Plugged), 9/16 SAE Pressure-Return Port	
Tank	Plastic 4.0 Gallon Vert. Tank Down Mtg. 700 Cu. In. Useable + Reserve & Vent Screw	
		ELECTRICAL CIRCUIT
Valving	Check Valve (Cartridge Style) Manual Release Valve (Cartridge Style)	
Wiring	230V AC Directly To Motor Momentary On & Pull-Type Actuating Sealed Limit Switch	



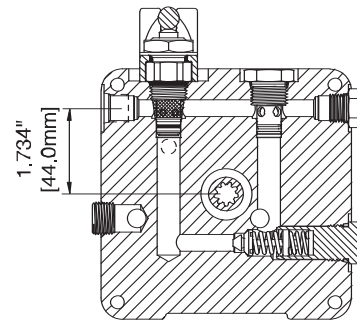
ITEM	DESCRIPTION	P/N	QTY.
1	Wiring Assy.	W-200	1
2	AC Motor 208-230V 1PH	4763-AC	1
3	M6X1.0 - 35mm SHCS	3009-AA	4
4	Hi-Collar Lockwasher	3020-AA	4
5	Coupling	1118-AA	1
6	Manual Release Assy.	K-100	1
7	Manual Release Valve	VF-9021	1
8	Valve Cartridge Check	2507-AA	1
9	Fixed Relief Valve	RV-19	1
10	Relief Valve Cap	3729-AA	1
11	Reservoir O-Ring	G1-1073-48	1
12	Pump Assy.	KP20	1
13	Pump Mounting Bolt	1112-AA	2
14	Inlet Plumbing Kit	K-230	1
15	Inlet Hose/Filter Assy.	3382-AA	1
16	Pump O-Ring Kit	K-40	1
17	Return Tube	4536-AA	1
18	Breather	3437-AA	1
19	Reservoir	3899-AC	1
20	Reservoir Screw	3346-AA	4
21	Compression Tube Nut	816-217	1
22	Compression Sleeve	816-218	1
23	Plug Pipe 3/8 NPT	1456-AA	1
24	Cord Set SJO 14/3	3080-AB	1
25	Spring	4475-AA	1
26	Plumbing Plug	1170-AA	1
27	Limit Switch Assy.	4043-AA	1

230V AC 1PH AUTO HOIST 4-POST LIFT POWER UP/GRAVITY DOWN

This unit is for raise-hold-lower of the lift, with manual control of the lowering speed. A push-button starts the motor to raise the lift. The unit features a fixed relief valve. Cartridge valves are used, allowing easy field service & interchangeability.



UNIT SPECIFICATION		HYDRAULIC CIRCUIT
Motor	208-230V AC 3450 RPM 1PH 60 Hz	
Test	Dielectric Std. 2.16.15	
Pump	AFC 3.1 CC/Rev. (.189 Cu. In/Rev.)	
Relief	Fixed At 2450 PSI Nominal	
Endhead	3/8 NPT Aux. Port (Plugged), 9/16 SAE Pressure-Return Port	
Tank	Steel 6.3 Gallon Vert. Tank Down Mtg. 1200 Cu. In. Useable + Reserve & Vent Screw	ELECTRICAL CIRCUIT
Valving	Check Valve (Cartridge Style) Manual Release Valve (Cartridge Style)	
Wiring	230V AC Directly To Motor	



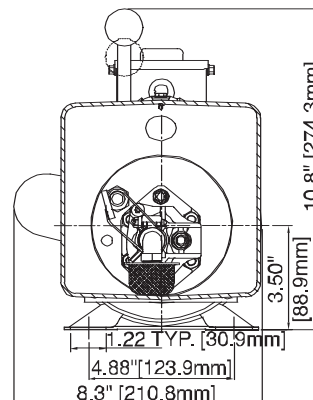
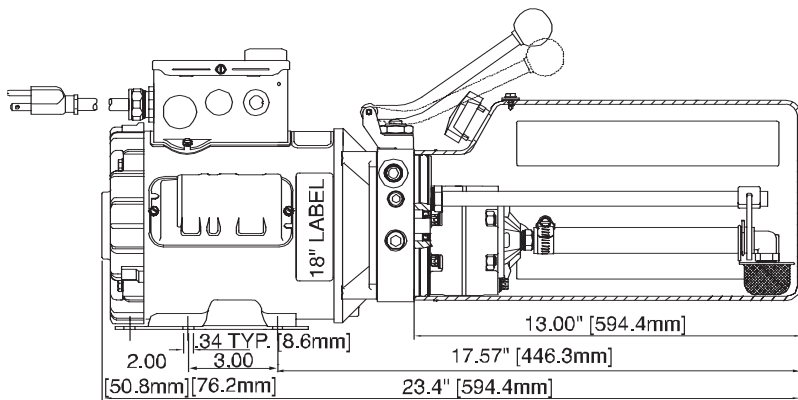
ENDHEAD SECTION

AC-10FP	ITEM	DESCRIPTION	P/N	QTY.
	1	Wiring Assy.	W-200-230	1
	2	AC Motor 208-230V 1PH	4350-AC	1
	3	M6X1.0 - 35mm SHCS	3009-AA	4
	4	Hi-Collar Lockwasher	3020-AA	4
	5	Coupling	1118-AA	1
	6	Manual Release Assy.	K-100	1
	7	Manual Release Valve	VF-9021	1
	8	Valve Cartridge Check	2507-AA	1
	9	Fixed Relief Valve	RV-17	1
	10	Relief Valve Cap	3729-AA	1
	11	Reservoir O-Ring	G1-1073-48	1
	12	Pump Assembly	KP31	1
	13	Pump Mounting Bol:	F1-1053-00	2
	14	Inlet: Plumbing Ki:	K-328	1
	15	Filter	1611-AA	1
	16	Pump O-Ring Ki:	K-40	1
	17	Return Hose	5214-AA	1
	18	Breather	1683-AB	1
	19	Reservoir	R1-6000-11	1
	20	Reservoir Screw	F2-1170-31	4
	21	Plumbing Plug	1456-AA	1
	22	Return Tube Fitting	5115-AA	1
	23	Return Tube Sleeve	5116-AA	1
	24	Plumbing Plug	1170-AA	1
	25	Cordset SJO 14/3	3080-AB	1
	26	Spring	4475-AA	1
	27	Plumbing Plug	1215-AA	1
	28	Washer	1261-BA	2

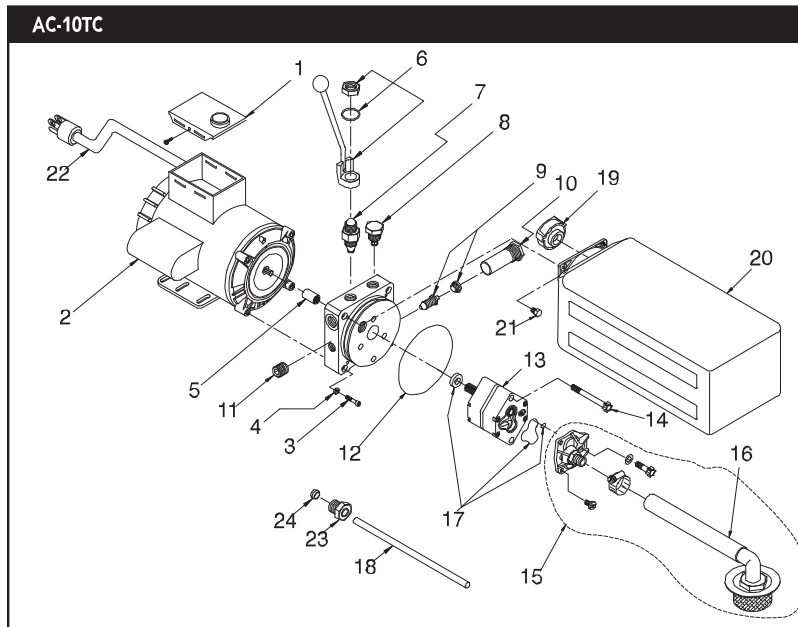
AC-10TC

115V AC 1PH TIRE CHANGER POWER UP/GRAVITY DOWN

Designed for smaller, low-rise auto hoists & can be mounted either horizontally or vertically. A push button on the motor starts the unit to raise the vehicle on the lift. To lower, a manually operated cartridge-style release valve is used for finger-tip control of lowering speed.



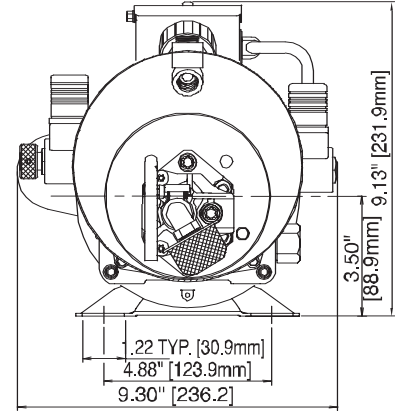
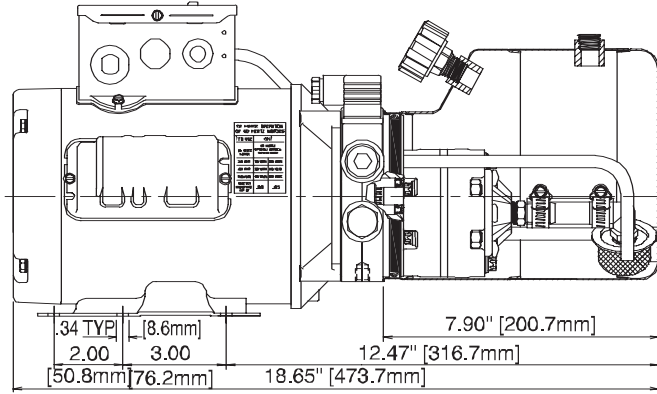
UNIT SPECIFICATION		HYDRAULIC CIRCUIT
Motor	115V AC 3450 RPM 1PH 60 Hz. 3/4 HP Int. Duty	
Test	Motor/Switch Dielectric Tested	
Pump	AFC 0.8 C.C./Rev. (.049 Cu. In/Rev.)	ELECTRICAL CIRCUIT
Relief	Fixed At 2300 SI Nominal	
Endhead	9/16-18 SAE Pressure-Return Port	ENDHEAD SECTION
Tank	Black Plastic 6.5 Qt. Horz. Or Vert. (Tank Down) Mtg. (370 Cu. In. Useable) W/Breather-Fill Port	
Valving	Check Valve (Cartridge Style) Manual Release Valve (Cartridge Style)	
Wiring	115V AC Directly To Motor Momentary On Switch/8 Ft. 16/3 SJO Cordset	



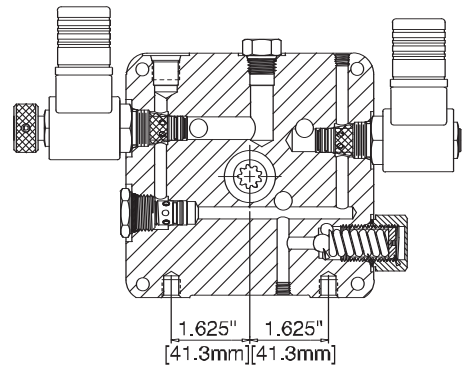
ITEM	DESCRIPTION	P/N	QTY.
1	Wiring Assy.	W-200-115	1
2	AC Motor 115/230V 1PH	2252-BC	1
3	M6X1.0 - 35mm Shcs	3009-AA	4
4	Hi-Collar Lockwasher	3020-AA	4
5	Coupling	1118-AA	1
6	Manual Release Assy.	K-100	1
7	Manual Release Valve	VF-9021	1
8	Valve Cartridge Check	2507-AA	1
9	Fixed Relief Valve	RV-17	1
10	Relief Valve Cap	3729-AA	1
11	Plug Pipe 3/8 NPT	1456-AA	1
12	Reservoir O-Ring	G1-1073-48	1
13	Pump Assy.	KP08	1
14	Pump Mounting Bolt	1111-AA	2
15	Inlet Plumbing Kit	K-108	1
16	Inlet Hose/Filter Assy.	2634-AA	1
17	Pump O-Ring Kit	K-40	1
18	Return Tube	5203-AA	1
19	Breather	3437-AA	1
20	Reservoir	3915-AC	1
21	Reservoir Screw	3346-AA	4
22	Cordset SO 16/3	5148-AB	1
23	Compression Tube Nut	5115-AA	1
24	Compression Sleeve	5116-AA	1

115V AC 1PH MAN LIFT POWER UP/GRAVITY DOWN

Designed for use on 115V AC operated, elevated work platforms using a raise-hold & gravity lower circuit.
Includes: • Normally open valve to protect operators from run-on • Manual override to allow the platform to be lowered in case of power failure • Electronic load delay for reliable operation in degraded voltage areas.



UNIT SPECIFICATION		HYDRAULIC CIRCUIT
Motor	115V AC 1 HP 3450 RPM 50/60 Hz. 1PH 56FR Int. Duty Tenv. Cwde. Rotation	
Pump	AFC 1.0 CC/Rev. (.061 Cu. In/rev.)	
Relief	Adj. Set At 2500 PSI (172.4 Bar)	
Endhead	9/16-18 SAE Pressure-Return Port 9/16-18 SAE Aux. Return Port (Plugged)	
Tank	1.0 U.S. Gallon Horiz.-Vert. Mtg. Steel Tank W/ 3/8 NPSC Breather-Fill Port	
Valving	Check Valve/115V AC N.O. 2-Way Valve/115V AC N.C. Valve W/Manual Override 115V AC To Motor/Electronic Time Delay	ELECTRICAL CIRCUIT
Wiring	Delay Wired To Motor & NO Valve Coil	<p>115 VOLT A.C. POWER SUPPLY</p>



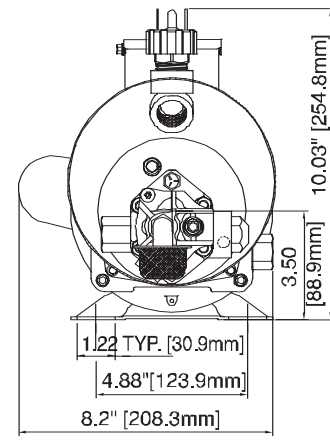
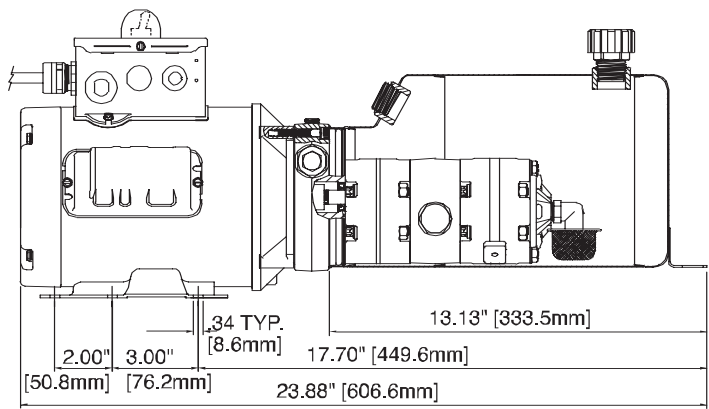
ENDHEAD SECTION

AC-20ML		ITEM	DESCRIPTION	P/N	QTY.
		1	Timer Delay Assy.	S6-2000-51	1
		2	AC Motor 115/230V 50/60Hz	2781-BC	1
		3	M6X1.0 - 35mm Shcs	3009-AA	4
		4	Hi-Collar Lockwasher	3020-AA	4
		5	Coupling	1118-AA	1
		6	Valve Body, NC	VF-4010	1
		7	Valve Cartridge Check	2507-AA	1
		8	Reservoir O-Ring	G1-1073-48	1
		9	Pump O-Ring Kit	K-40	1
		10	Return Tube	T2-1006-70	1
		11	Return Tube	T2-1006-97	1
		12	Inlet Plumbing Kit	KV	1
		13	Inlet Hose/Filter Assy.	2979-AA	1
		14	Pump Assy.	KP10	1
		15	Pump Mounting Bolt	1111-AA	2
		16	Reservoir	KR40	1
		17	Reservoir Screw	F2-1170-31	4
		18	Adj. Relief Valve Assy.	RV-2	1
		19	Breather	1214-AA	1
		20	Plug Pipe 3/8 NPT	1456-AA	1
		21	Hirschmann Connector	E0-1003-00	1
		22	Valve Body, NO	VF-4011	1
		23	Solenoid Coil, 115V AC	EF-1092	2
		24	Cordset W/Hirschman Conn.	S6-2400-00	1
		25	Plumbing Plug 9/16 SAE	1170-AA	1
		26	Filter	1611-AA	1

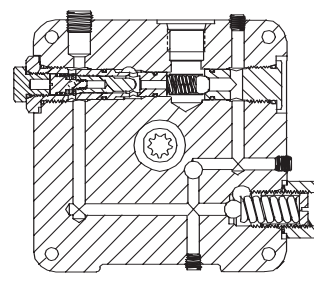
AC-40FC

115V AC 1PH FILTER CRUSHER POWER EXTEND/GRAVITY RETURN

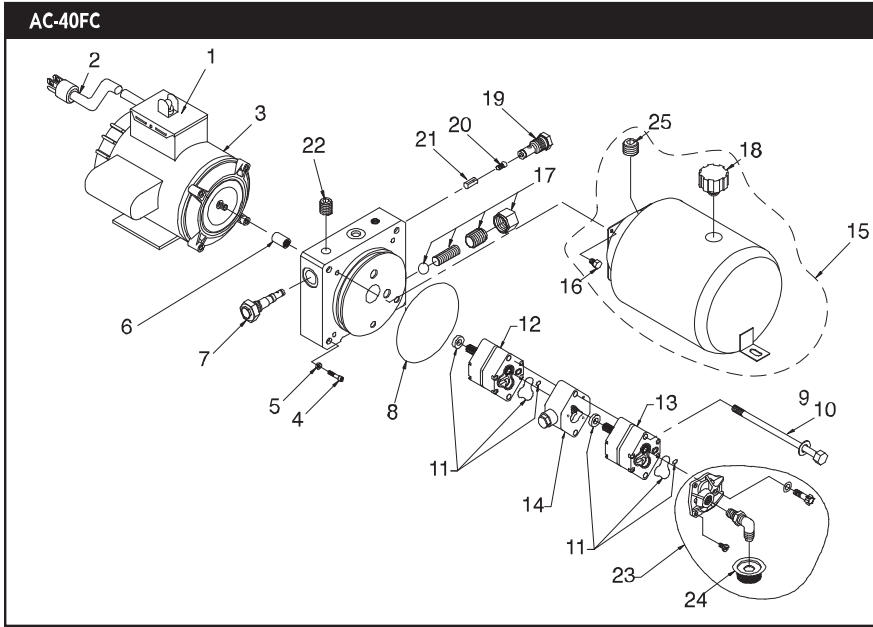
Incorporates a high-low pump for maximum output of oil for a fast extension of the cylinder, as well as high pressure/low volume flow for the work portion of the cycle. Use with single-acting spring return cylinder.



UNIT SPECIFICATION		HYDRAULIC CIRCUIT	
Motor	115V AC, 1 HP, 3450 RPM, 1 PH, 60Hz, Tenv		
Pump	A.F.C. 0.8 & 2.0 CC/Rev. Duplex W/Unload Set At 60 Bar (900 PSI)		
Relief	Adj. Set At 4000 PSI (275.9 Bar)	<th>ELECTRICAL CIRCUIT</th>	ELECTRICAL CIRCUIT
Endhead	3/4-16 SAE Pressure-Return Port (2) 3/8-16 Tap X .50 Deep Mtg. Hole		
Tank	6 Qt. Horiz. Mounting Steel Tank W/ 3/8 NPT Breather-Filler Port		
Valving	Relief, Check & Pilot Operated Normally Open Shuttle Valve		
Wiring	Momentary On Switch 8 Ft. 115V Cord		



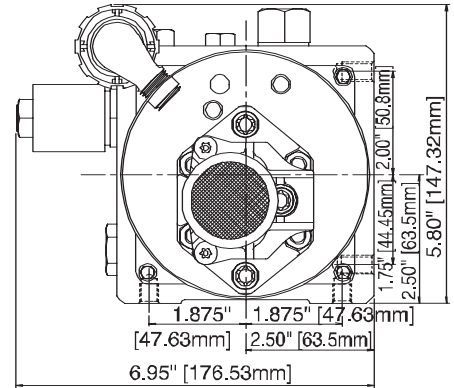
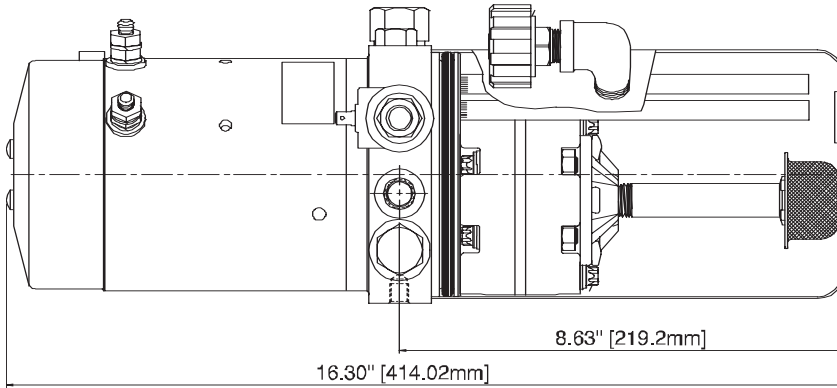
ENDHEAD SECTION



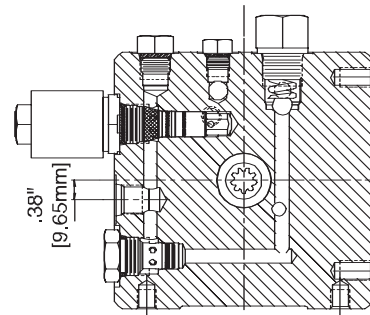
ITEM	DESCRIPTION	P/N	QTY.
1	Electric Switch Assy.	S6-2000-96	1
2	Cord Assy.	E4-1005-54	1
3	AC Motor 115/230V 50/60Hz.	2781-BC	1
4	M6 x 1.0 - 35MM SHCS	3009-AA	4
5	Hi-Collar Lockwasher	3020-AA	4
6	Coupling	1118-AA	1
7	Shuttle Valve Assy.	S3-1025-08	1
8	Reservoir O-Ring	G1-1073-48	1
9	Washer	1261-BA	2
10	Bolt 5/16-24 x 7.00" Hex	F1-1057-00	2
11	Pump O-Ring Kit	K-40	2
12	Pump Assy.	KP08	1
13	Pump Assy.	KP20	1
14	Unload Assy.	U-06	1
15	Reservoir	KR41	1
16	Reservoir Screw	F2-1170-31	4
17	Adj. Relief Valve Assy.	RV-2	1
18	Breather	1683-AB	1
19	Valve Assy. Check N3	2289-AA	1
20	Spring & Ball	S1-1008-03	1
21	Spring Retainer	W6-1001-02	1
22	Plug 1/4 NPT	1215-AA	1
23	Inlet Plumbing Kit	K-233	1
24	Filter	1611-AA	1
25	Plug 3/4 NPT	1896-AA	1

12V DC MATERIAL HANDLING SOLENOID OPERATED POWER UP/GRAVITY DOWN

Designed for low-lift pallet trucks. The units have a 3-way circuit for raise-hold-lower functions & are used with a single acting cylinder. This unit is plumbed for vertical mounting & is interchangeable with other manufacturer's power packs.



UNIT SPECIFICATION		HYDRAULIC CIRCUIT
Motor	12V DC 2 Terminal Std. Duty Corrosion Resistant Plate Finish	
Pump	AFC 1.6 CC/Rev. (.098 Cu. In/Rev.) CCW Rotation, Mesh Inlet Filter	
Relief	Adj. Relief At 2500 PSI	
Endhead	9/16-18 SAE Pressure-Return Port (4) 3/8-16 X .38 Deep Mtg. Hole	
Tank	2 Qt. Vert. Mtg. Steel Tank W/3/8 NPT Breather-Fill Port	
Valving	Check Valve/12V DC Solenoid Oper. NC Valve/Pressure-Compensated Flow Control Valve	
Wiring	12V DC To Motor Terminal 12V DC To NC Valve Solenoid	



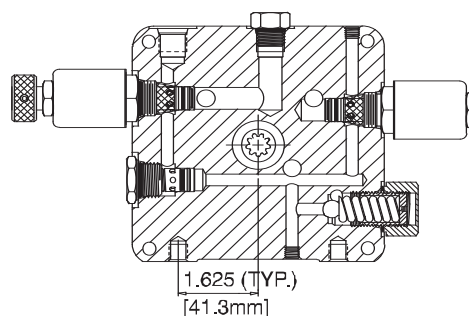
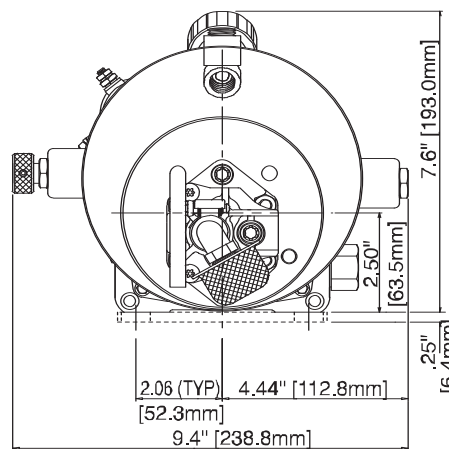
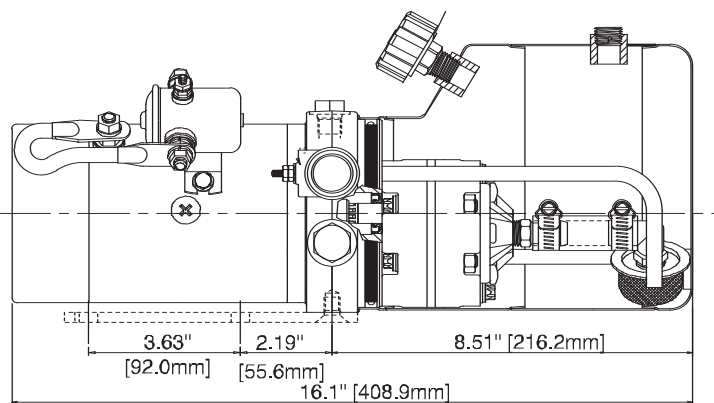
ENDHEAD SECTION

DC-20MH	ITEM	DESCRIPTION	P/N	QTY.
	1	Plug	1170-AA	1
	2	DC Motor 12V Std	KMD2	1
	3	Valve, NC 12V DC	EF-1081&VF-4009	1
	4	Valve Cartridge Check	2507-AA	1
	5	Reservoir O-Ring	G1-1073-48	1
	6	Coupling	1118-AA	1
	7	Pump O-Ring Kit	K-40	1
	8	Inlet Plumbing Kit	K-109	1
	9	Filter	1611-AA	1
	10	Pump Assy.	KP16	1
	11	Pump Mounting Bolt	1111-AA	2
	12	Reservoir	R1-1460-05	1
	13	Reservoir Screw	F2-1170-31	4
	14	Breather	1214-AA	1
	15	Adj. Relief Valve Assy.	RV-2	1
	16	Plug	W2-1004-00	1
	17	Elbow 90 Degrees	4495-AC	1
	18	Return Tube	T2-1006-70	2
	19	Motor Brush Kit	K-97	1
	20	Valve, Flow Control	FC-2.2	1

DC-20ML

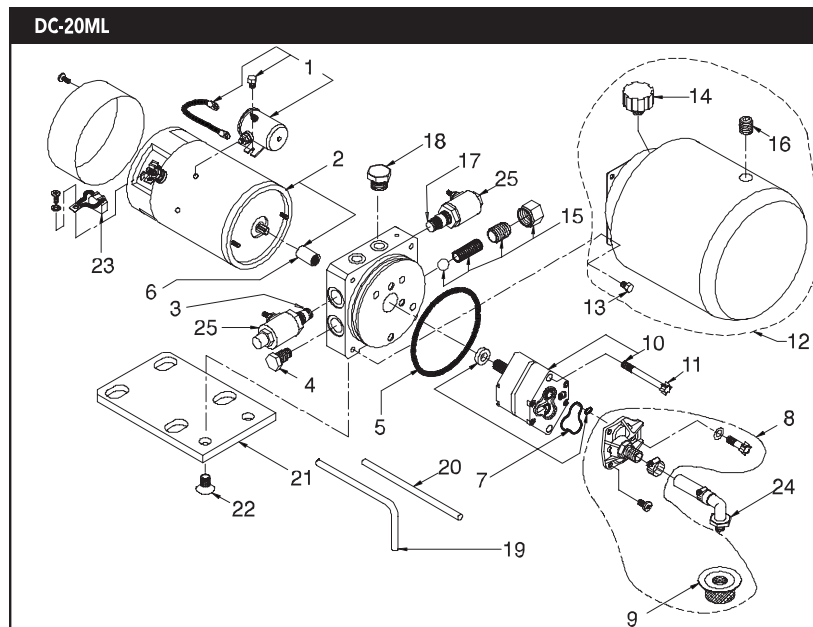
12V DC MAN LIFT SOLENOID OPERATED POWER UP/GRAVITY DOWN

Designed for use on battery operated, elevated work platforms using a raise-hold & gravity lower circuit. Includes: • Normally open valve to protect operators from run-on • Manual override to allow the platform to be lowered in case of power failure.



ENDHEAD SECTION

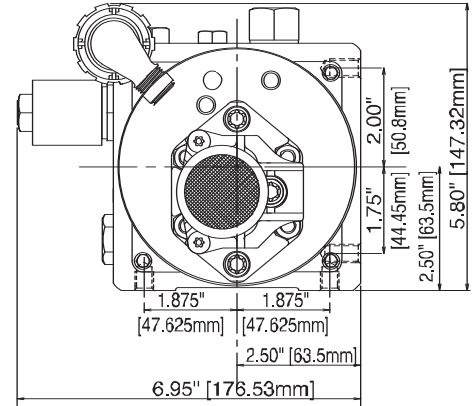
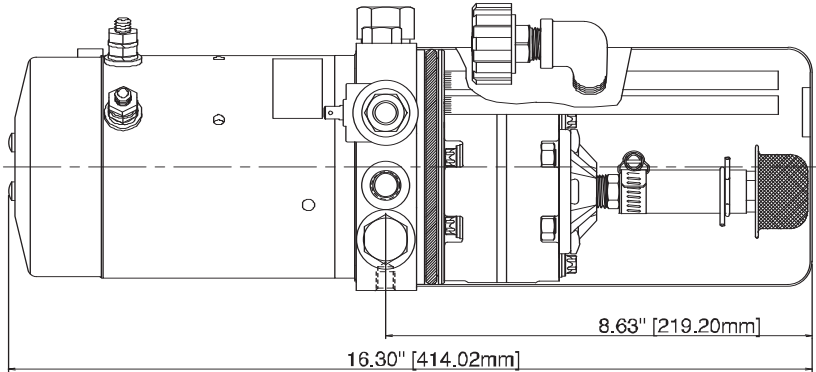
UNIT SPECIFICATION		HYDRAULIC CIRCUIT
Motor	12 V DC 1 Terminal Std. Duty Corrosion Resistant Plate Finish	
Pump	AFC 1.0 CC/Rev. (.061 Cu. In./Rev.)	
Relief	Adjustable Relief At 2500 PSI	
Endhead	9/16-18 SAE Pressure-Return Port (2) 3/8-16 X .37 Deep Mtg. Holes	
Tank	1.0 Gallon Horiz.-Vert. Mtg. Steel Tank W/3/8 NPSC Breather-Filler Port	
Valving	Check Valve/12V DC N.O. 2-Way Valve/12V DC NC 2-Way Valve W/Manual Override	
Wiring	12V DC To Start Switch	



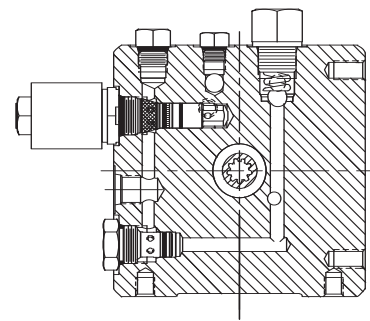
ITEM	DESCRIPTION	P/N	QTY.
1	Solenoid Starter Assy. 12v	KS1	1
2	DC Motor 12V	KMD1	1
3	Valve NC 12V DC	VF-4010	1
4	Valve Cartridge Check	2507-AA	1
5	Reservoir O-Ring	G1-1073-48	1
6	Coupling	1118-AA	1
7	Pump O-Ring Kit	K-40	1
8	Inlet Plumbing Kit	KV	1
9	Filter	1611-AA	1
10	Pump Assy.	KP 10	1
11	Pump Mounting Bolt	F1-1052-75	2
12	Reservoir	KR40	1
13	Reservoir Screw	F2-1170-31	4
14	Breather	1214-AA	1
15	Adj. Relief Valve Assy.	RV-2	1
16	Plug	1456-AA	1
17	Valve NO 12V DC	VF-4011	1
18	Plug	1170-AA	1
19	Return Tube 90° Bend	T2-1006-97	1
20	Return Tube	T2-1006-70	1
21	Bracket Mounting Unit	1910-AB	1
22	Bolt 3/8-16x .50 Phil Flt Hd	F2-1020-50	2
23	Motor Brush Kit	K-90	1
24	Plumbing Assy. Inlet	2979-AA	1
25	Solenoid Coil 12V DC	EF-1082	2

24V DC MATERIAL HANDLING SOLENOID OPERATED POWER UP/GRAVITY DOWN

Designed for low-lift pallet trucks. The units have a 3-way circuit for raise-hold-lower functions & are used with a single acting cylinder. This unit is plumbed for vertical mounting & is interchangeable with other manufacturer's power packs.



UNIT SPECIFICATION		HYDRAULIC CIRCUIT
Motor	24V DC Std. Duty 2-Terminal Corrosion Resistant Plate Finish	
Pump	AFC 1.6 CC/Rev. (.098 Cu. In/Rev.) CCW Rotation/Mesh Inlet Filter	
Relief	Adj. Relief At 2500 PSI	
Endhead	9/16-18 SAE Pressure-Return Port (4) 3/8-16 X .38 Dp. Mtg. Holes	
Tank	2 Qt. Vert. Motor Up Mtg. Steel Tank W/3/8 NPT Breather-Filler Port	
Valving	Check Valve/24V DC Solenoid Oper. NC Valve/Pressure-Compensated Flow Control Valve	
Wiring	24V DC To Motor Terminal/24V DC To NC Valve Solenoid	



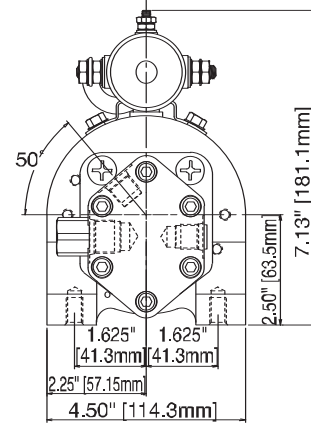
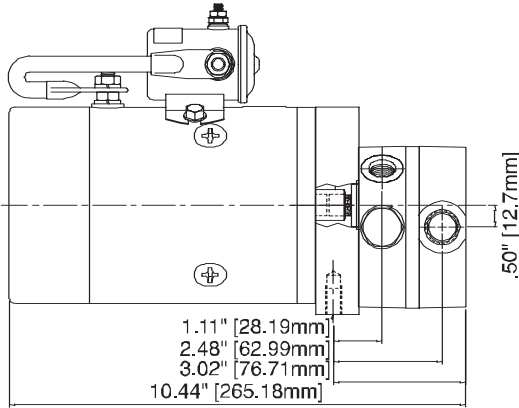
ENDHEAD SECTION

DC-24MH		ITEM	DESCRIPTION	P/N	QTY.
		1	Plug	1170-AA	1
		2	DC Motor 24V Std	KMD5	1
		3	Valve, NC 24V DC	EF-1085/VF-4009	1
		4	Valve Cartridge Check	2507-AA	1
		5	Reservoir O-Ring	G1-1073-48	1
		6	Coupling	1118-AA	1
		7	Pump O-Ring Kit	K-40	1
		8	Inlet Plumbing Kit	4223-AA	1
		9	Filter	1611-AA	1
		10	Pump Assy.	KP16	1
		11	Pump Mounting Bolt	1111-AA	2
		12	Reservoir	R1-1460-05	1
		13	Reservoir Screw	F2-1170-31	4
		14	Breather	1214-AA	1
		15	Adj. Relief Valve Assy.	RV-2	1
		16	Plug	W2-1004-00	1
		17	Elbow 90 Degrees	4495-AC	1
		18	Return Tube	T2-1006-70	2
		19	Motor Brush Kit	K-92	1
		20	Valve, Flow Control	FC-2.2	1
		21	Suction Cover	2156-AA	1
		22	Plumbing Clamp	2231-AA	1

DC-30APU

12V DC AUXILIARY POWER UNIT RELIEF & CHECK VALVE ONLY

Intended to be used with remote directional control valving & reservoir. This unit has an adjustable relief valve & outlet check valve. For applications such as back-up hydraulic power for truck mounted/mobile equipment. It can also be used to power material handling functions & other intermittent duty applications.

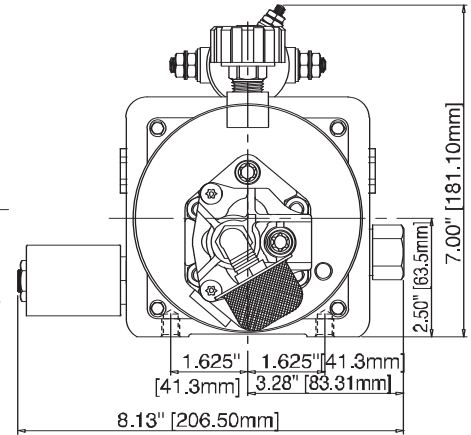
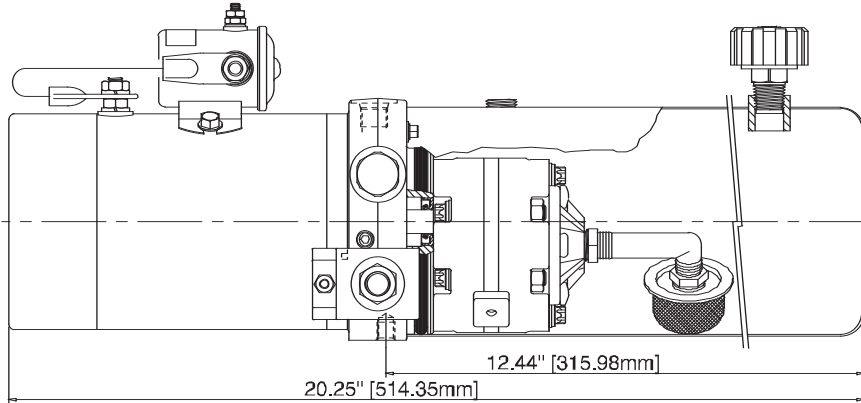


UNIT SPECIFICATION		HYDRAULIC CIRCUIT
Motor	12V DC 1T Std. Duty Corrosion Resistant Plate Finish	
Pump	2.0 CC/Rev.	
Relief	2500 PSI	
Valving	Check & Adj. Relief Valve	
Wiring	12V DC	
Ports	3/4 SAE Side Inlet 9/16 SAE Side Outlet & Relief Drain	

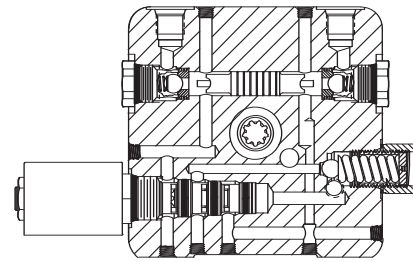
DC-30APU	ITEM	DESCRIPTION	P/N	QTY.
	1	Solenoid Starter 12V	KS1	1
	2	DC Motor 12V	KMD1	1
	3	Motor Adaptor	2000384	1
	4	Adj. Relief Valve Assy.	S8-6000-00	1
	5	Coupling	2441-BA	1
	6	Bolt	2458-AA	2
	7	Pump Assy.	PE-1063	1
	8	Seal	G2-1002-00	1
	9	Check Valve Kit	S8-6000-01	1
	10	Motor Brush Kit	K-90	1

12V DC BALE SPIKE SOLENOID OPERATED POWER UP/POWER DOWN

Designed primarily to operate tines which pick up round bales. Incorporates a 2 position, 4-way cartridge valve & double pilot-operated checks to control a double acting cylinder, to lift-hold-lower the bale.



UNIT SPECIFICATION		HYDRAULIC CIRCUIT
Motor	12V DC 1 Terminal Std. Duty Corrosion Resistant Plate Finish	
Pump	AFC 2.0 CC/Rev. (.122 Cu. In/Rev.)	
Relief	Adj. Set At 2500 PSI (172.4 Bar)	
Endhead	9/16 SAE Ports "A" & "B" (2) 3/8-16 X .38 Deep Mtg. Hole	
Tank	3 Qt. Capacity Horiz. Mount Steel Tank W/3/8 NPT Breather-Fill Port	
Valving	2P4W Cartridge Valve W/12V DC Coil/Double PO Checks & 9/16 SAE Ports	
Wiring	12V DC To Start Switch 12V DC To 2P4W Valve Coil	



ENDHEAD SECTION

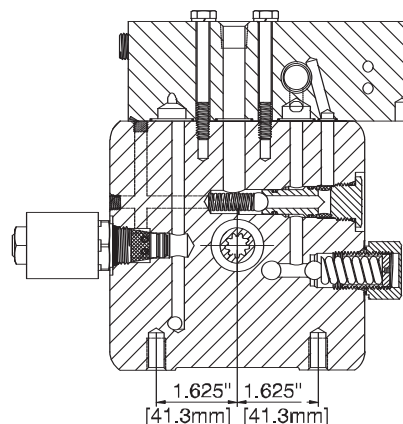
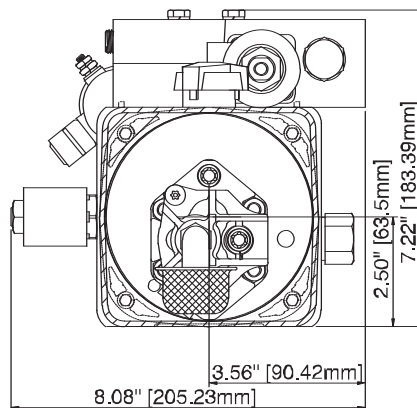
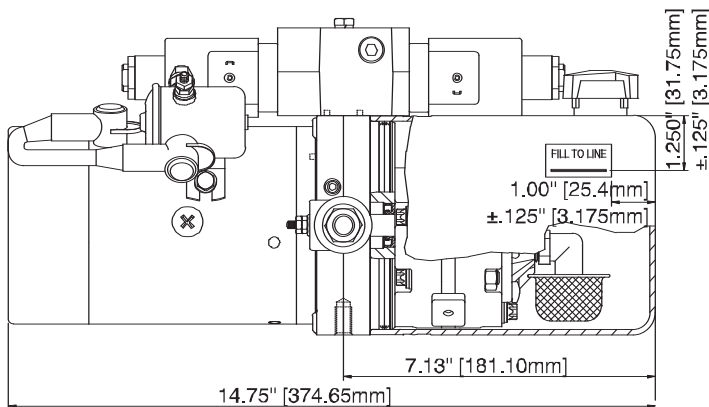
POWER UNITS

DC-70BS	ITEM	DESCRIPTION	P/N	QTY.
	1	Solenoid Starter 12V	KS1	1
	2	DC Motor 12V	KMD1	1
	3	Solenoid Coil 12V DC	EF-1126	1
	4	Reservoir O-Ring	G1-1073-48	1
	5	Coupling	1118-AA	1
	6	Pump O-Ring Kit	K-40	1
	7	Inlet Plumbing Kit	KH	1
	8	Filter	1611-AA	1
	9	Pump Assy.	KP20	1
	10	Pump Mounting Bolt	1112-AA	2
	11	Reservoir	KR14	1
	12	Reservoir Screw	F2-1170-31	4
	13	Breather	1214-AA	1
	14	Adj. Relief Valve Assy.	RV-2	1
	15	Plug 3/8 NPT	1456-AA	1
	16	PO Check Kit	S8-9000-00	2
	17	PO Spool	X2-1048-04	1
	18	Motor Brush Kit	K-90	1
	19	2P4W Solenoid Valve	VF-1060	1

DC-80SP

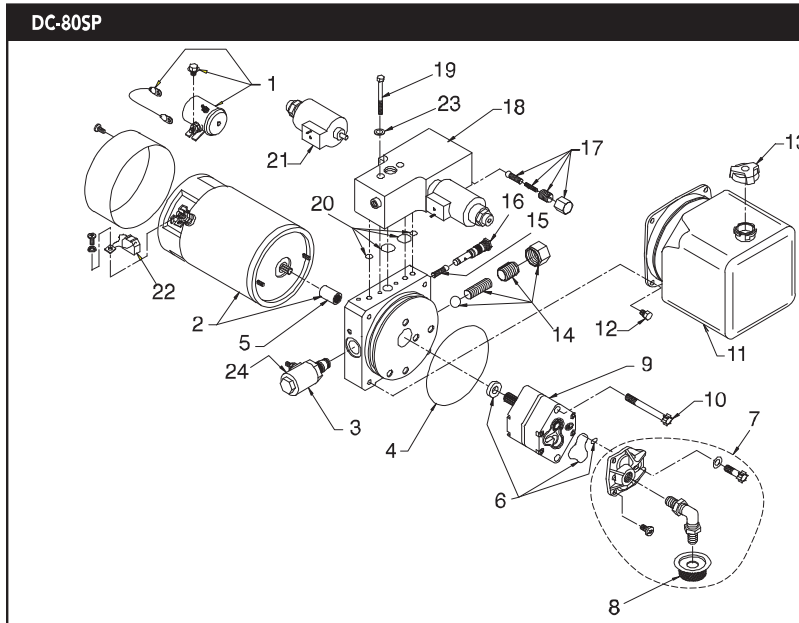
12V DC SNOW PLOW SOLENOID OPERATED POWER ANGLE & LIFT/GRAVITY DOWN

Designed to operate all functions of a power operated angling snow plow. The unit includes a lift-hold-gravity lower function for the blade, with a continuous "float" capability. A directional valve controls power angling of the blade, 2 cross-over reliefs protect the system from damage should the blade be obstructed while plowing.



ENDHEAD SECTION

UNIT SPECIFICATION		HYDRAULIC CIRCUIT
Motor	12V DC 1 Term Std. Extended Duty	
Pump	AFC 1.6 CC/Rev. (.098 Cu. In./Rev.)	
Relief	Adj. Relief Valve Set At 2000 PSI	
Endhead	1/4 NPTF Ports "A", "B" & "C" (On U-Valve) (2) 3/8-16 Tap X .62 Deep Mtg. Holes	
Tank	1.5 Qt. Capacity Horiz. Mount Plastic Tank W/Breather-Filler Port	
Valving	3P4W Solenoid Operated Directional Control Valve W/(2) 12V DC Solenoids/Crossover Relief Valves Set At 1500 PSI	
Wiring	12V DC To U-Valve Solenoids, Motor Solenoid & Release Solenoid	



ITEM	DESCRIPTION	P/N	QTY.
1	Start Switch Assy.	KS1	1
2	DC Motor 12V	KMD1	1
3	Valve NC 12V DC	VF-4009	1
4	Reservoir O-Ring	G1-1073-48	1
5	Coupling	1118-AA	1
6	Pump O-Ring Kit	K-40	1
7	Inlet Plumbing Kit	KH	1
8	Filter	1611-AA	1
9	Pump Assy.	KP16	1
10	Pump Mounting Bolt	F1-1052-75	2
11	Reservoir	3540-AC	1
12	Reservoir Screw	3346-AA	4
13	Breather	8060-CC	1
14	Adj. Relief Valve Assy.	RV-2	1
15	Spring And Ball Assy.	S1-1004-12	1
16	Valve Check Assy.	2290-BA	1
17	Crossover Relief Valve Kit	S8-6000-38	2
18	U-Valve 4W3P CCCP 12V N2	U1-6710-81	1
19	Bolt 1/4-20 X 2 1/2 Hex	F1-1032-50	2
20	U-Valve O-Ring Kit	K-42	1
21	Solenoid Assy. DC	E1-4005-12	2
22	Motor Brush Kit	K-90	1
23	Lock Washer	1479-AA	2
24	Coil Only	EF-1082	1