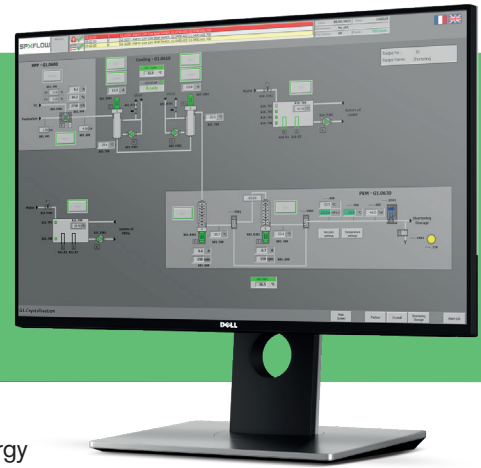


## GS SMARTLOGIC™ PROCESS CONTROL SYSTEM



The GS SmartLogic™ Process Control System maximizes uptime and improves energy efficiency in the fats and oils industry, specifically for margarine and shortening manufacturing process lines. This easy-to-use automation system ensures consistent margarine manufacturing through control, recording, and documentation of process parameters. It allows for easy fine-tuning of process variables like recipe formulation, capacity, and temperature helping processors achieve the high-quality output.

### **Process Control**

The GS SmartLogic process control system features a user-friendly production program with customer customized mimic process diagrams for easy overview of the process. With the GS SmartLogic control system, users can easily navigate between different images, following the product through the production process.

It allows easy recipe changes and parameter adjustments, enabling better process control for increased productivity and product quality. Experience an immediate and precise overview of your process with the color-animated displays showing relevant values and process states. Stay in control and make informed decisions effortlessly.

The system supports monitoring and control from multiple stations.

### **Recipe Handling**

The system stores batch and production parameters, enabling fast search and editing capabilities. Additionally, it generates detailed batch, production and CIP reports and provides traceability for identifying faulty components.

### **Maximum Uptime**

The GS SmartLogic Professional Process Control System enhances uptime with efficient spare parts and service management. Built-in manuals simplify maintenance, and predictive maintenance minimizes unplanned downtime. The system includes a network diagnostic tool allowing operators to find and resolve faults themselves.

### **Remote Assistance**

SPX FLOW offers remote support through modem or internet connection for prompt corrective maintenance to keep your operations running smoothly.

### **Waste Control and Energy Efficiency**

GS SmartLogic Process Control System enables the achievement of sustainability goals by enhancing production control, minimizing product loss and energy consumption. The system ensures consistent operation and monitoring of the process resulting in reduced product loss and less energy consumption. Documentation facilitates problem identification and swift resolution. Prompt issue addressing reduces downtime and maintains production flow.

# Gerstenberg Schröder®

## Functionality

Semi- and full-automatic batch, production and CIP programs and simple traceability.

## Reports and Information

Depending on the version, the automation system provides comprehensive reports, statistics, analyses to improve productivity. Historical trends report monitors process changes over time. Production, batch, and CIP reports can be generated on-demand or automatically.

The GS SmartLogic is available in three versions:

**GS SmartLogic Basic:** For semi-automatic control of plant components, e.g., dosing control, temperature regulation etc.

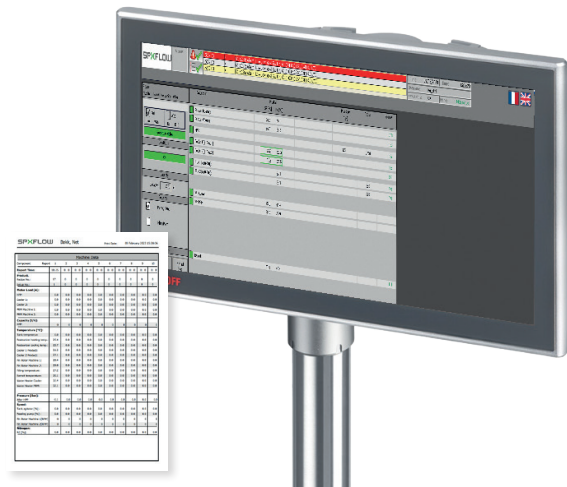
**GS SmartLogic Advanced:** For the fully automatic operation control of process lines. In addition to the basic version, the GS SmartLogic Advanced also includes full automatic production programs.

**GS SmartLogic Professional:** The complete process control solution with a high degree of flexibility. Including a PC-based system with web-based recipe editor and report system that can be used either as a stand-alone or as a client-server system with SCADA.

## Equipment

The GS SmartLogic Process Control System includes essential equipment for optimal performance: PC, touch screen panel, communication card, control software, GS SmartLogic software, reporting software, battery backup, modem, and graphic display.

Note: The equipment included may vary depending on the specific version of the GS SmartLogic Process Control System.



	SmartLogic - Basic-	SmartLogic - Advanced	SmartLogic - Professional
Semi-automatic control of the process	x	x	x
Software controllers	x	x	x
Profibus or Ethernet	x	x	x
30 recipes	x	x	
1,000 recipes			x
Full-automatic programs for the process		x	x
Scada system		x	x
Server PC with SQL database			x
Historical data saved for 12 months			x
Web-based recipe editor			x
Web-based report editor			x
Remote assistance for the PLC	x	x	x

## SPXFLOW®

SPX FLOW, Inc. reserves the right to incorporate our latest design and material changes without notice or obligation. Design features, materials of construction and dimensional data, as described in this bulletin, are provided for your information only and should not be relied upon unless confirmed in writing. Please contact your local sales representative for product availability in your region. For more information visit [www.spxflow.com](http://www.spxflow.com).

The SPX FLOW Technology Danmark  
Oestmarken 7, DK-2860 Soeborg, Denmark  
Phone: +45 70278222, Mail: [ft.dk.soeborg@spxflow.com](mailto:ft.dk.soeborg@spxflow.com)