



SPX Corporation
5885 11th Street
Rockford, IL 61109-3699 USA

Tech. Services: (800) 477-8326
Fax: (800) 765-8326
Order Entry: (800) 541-1418
Fax: (800) 288-7031

Internet Address:
<http://www.hytec.com>

Form No. 101660

Parts List for:

100948
100949
100950

Double-acting (Threaded Body)
SWING / PULL CLAMP

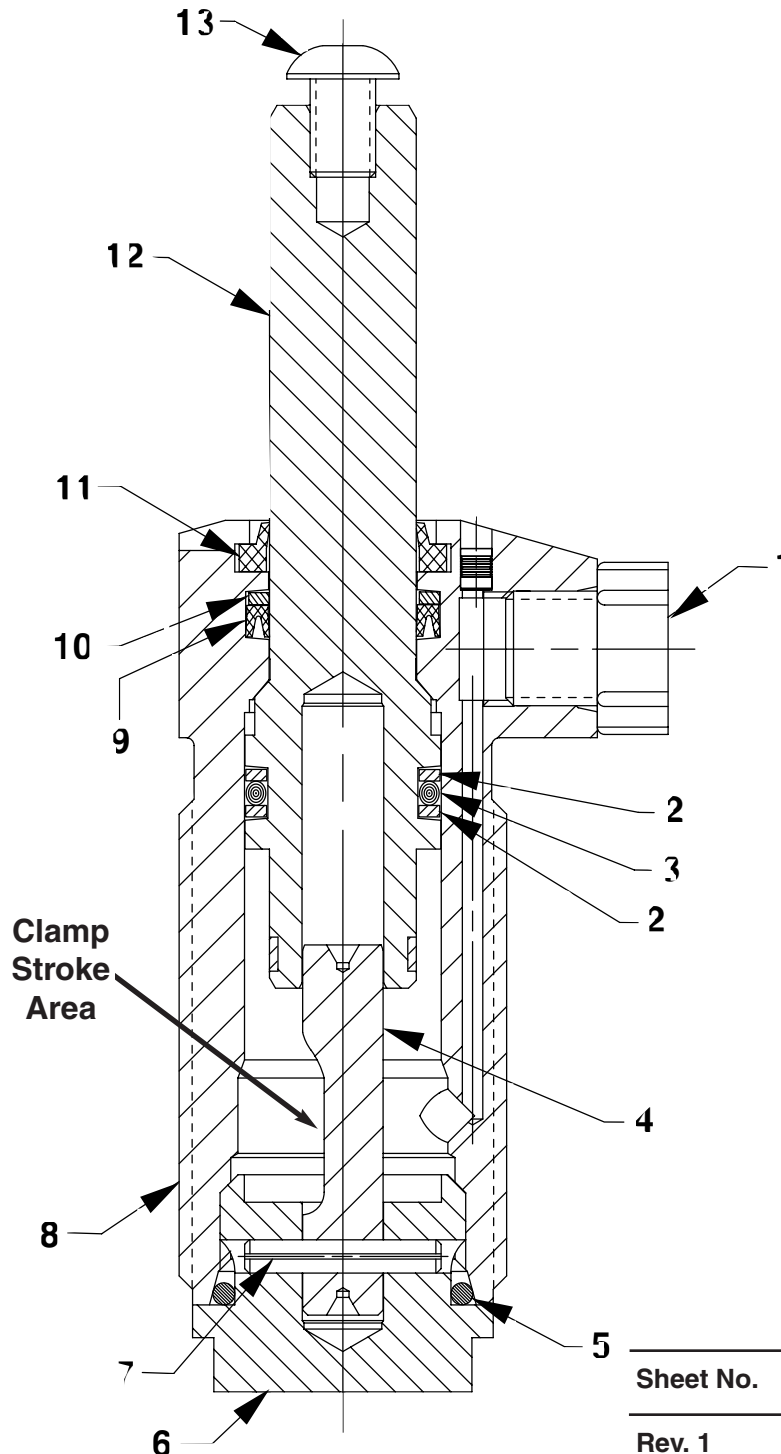
Max. Capacity: 750 lbs. Clamping Force (with 1.25" lg. arm) at 5,000 PSI Max.

100948 - Left Hand, .345" Stroke

100949 - Right Hand, .345" Stroke

100950 - Straight Pull, .345" Stroke

The piston rod U-cup seal (Item 9) can be easily twisted if installed incorrectly. Before installing the piston rod (Item 12) lubricate the rod and all seals with hydraulic oil. Install the rod with light pressure and a twisting motion as the seal is first contacted.



Sheet No. 1 of 1

Rev. 1 Date: 10 June 1998

Parts List, Form No. 101660, Back sheet 1 of 1

Item No.	Part No.	No. Req'd	Description
1	250961	2	Plastic Plug Fitting
2	*19130	2	Backup Washer
3	*211417	1	O-ring (3/4 X 35/64 X 3/32)
4	351136	1	Rotating Cam (Left Hand† 90° for 100948)
	351137	1	Rotating Cam (Right Hand† 90° for 100949)
	351135	1	Rotating Cam (Straight Pull for 100950)
5	*10658	1	O-ring (1" X 13/16 X 3/32)
6	351197	1	End Cap (Torque to 80/90 ft. lbs.)
7	10895	1	Roll Pin
8	351139	1	Swing Clamp Body
9	*216328	1	U-cup
10	*208721	1	Backup Washer
11	*216289	1	Rod Wiper
12	351138	1	Piston Assembly
13	251910	1	Cap Screw (1/4-20 UNC x 3/8 Lg.; Torque to 100/125 in. lbs.)

NOTE: Grease roller in piston rod (Item #12) and cam with a light coating of CDM Extreme Pressure Lube #3.

Part numbers marked with an asterisk (*) are contained in Repair Kit No. 300870.

†Right hand rotation is clockwise rotation when viewed from the piston rod end.
 Left hand is counterclockwise rotation. To reverse clamp rotation, order the appropriate rotating cam.

Note: Shaded areas reflect last revision(s) made to this form.

Refer to any operating instructions included with this product for detailed information about operation, testing, disassembly, reassembly, and preventive maintenance.

Items found in this parts list have been carefully tested and selected. **Therefore: Use only genuine Hytec replacement parts!**

Additional questions can be directed to our Technical Services Department.