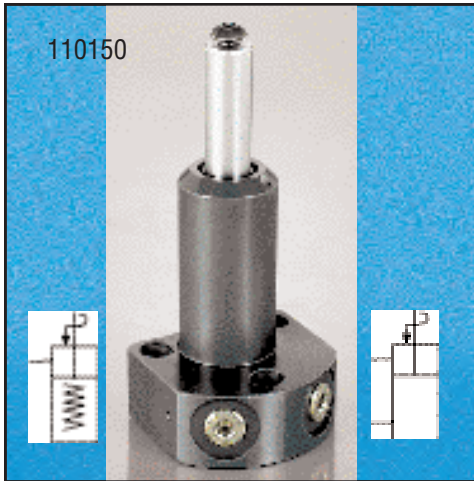


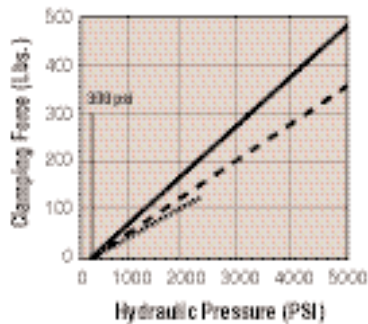
Swing/Pull Clamp - Surface Mount - Externally Plumbed - Lower Flange Style - 365 lbs.



Features

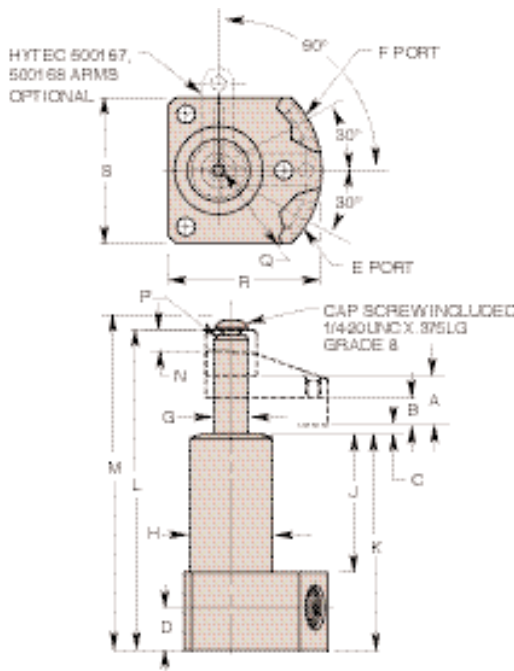
- External plumbing eliminates need to gun drill additional ports in fixture
- Can be inserted from above or below fixture plate
 - Top mounting provides extra height to accommodate large work pieces
 - Top mounting does not require drilling of large fixture hole

- Special rod wiper seal protects internal clamp components
- Corrosion resistant construction
- Heat treated, chrome plated piston rod
- Power-Tech® treated body and hardened cam for long wear and corrosion resistance

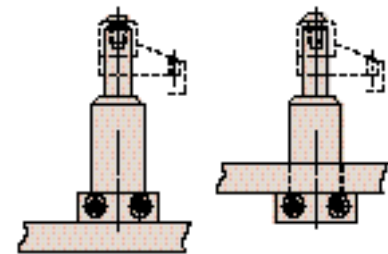


Performance

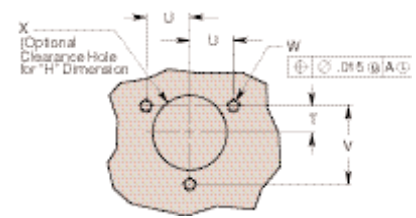
- With Hytec No. 500168 (3.25" long)
- - - - - With Hytec No. 500167 (1.05" long)
- Straight Pull



Mounting Options



Mating Hole Pattern



Cat. No.	Specifications							Dimensions (In Inches)						
	Oper.	Swing Direction	*Force (Lbs.)	Eff. Area (Sq. In.)	Oil Cap. (Cu. In.)	A Total Stroke	B Clamping Stroke	C	D	E Clamp Port	F Unclamp Port	††G Dia.	H Dia.	
110150	Single-Acting	LH (Counterclockwise)	365	.098	.065	.638	.320	.096	.540	1/16-20 UNF SAE-4	Breather Plug 1/16-20 UNF †SAE-4	.435	1.070	
110151		RH (Clockwise)												
110152		Straight Pull												
110153	Double-Acting	LH (Counterclockwise)	.248	.163	.638	.320	.096	.540	1/16-20 UNF SAE-4	1/16-20 UNF SAE-4	.435	1.070		
110154		RH (Clockwise)												
110155		Straight Pull												

Cat. No.	Dimensions (In Inches)													
	J	K	L	M	N Thread Min.	P Thread Size	Q Radius	R	S	T	U	V	W Thread Size	X Dia.
110150	1.800	2.780	4.045	4.302	.275	1/4-20 UNC	1.250	1.870	1.770	.395	.684	1.185	10-24 UNC	1.095 1.125
110151														
110152														
110153														
110154														
110155														

NOTE: * With 1.00" long arm at 5,000 psi max. operating pressure.
 † Do not pressurize - single-acting only.
 †† See page 59 of H05 for custom arm mounting.

Internal cam may be removed for an unguided straight pull.
 See page 58 of H05 for maximum operating speeds and rotation options.