

# JACKS

## SELECT FROM A WIDE RANGE OF LIFTING JACK PRODUCTS AND MAINTENANCE SETS TO COMPLETE YOUR SYSTEM REQUIREMENTS

- A hydraulic jack is a powerful lifting or pushing tool designed to provide effective lift over greater distances than a basic mechanical jack.
- Non-inflated air jacks are less than 2,54 mm thick, making lifting tasks in small spaces seem routine, tonnages up to 68 tons.
- Turnkey maintenance sets offer matched hydraulic system components, adapters and hydraulic spreader, contained in a rugged carrying and storage case.
- Specialty hydraulic jacks support post tension, low height or clearance applications.
- Portable high tonnage jacks are totally self-contained, their modular design allows you to change lifting modules to suit your tonnage or height requirements.





	Section / Series	Page Content	Tonnage Range	Pages
	Introduction	Choosing the Right Jack	—	165-166
	9	Sidewinder Mini Jacks	5 - 20	167
		Low Profile Bottle Jacks	12, 20 & 30	168
		Portable Hydraulic Power Bottle Jacks	2 - 110	169
		Telescoping Bottle Jacks	6-13	170
	J	Toe Jacks	5.5, 11 & 27.5	171
		Economy Toe Jacks	2.5 & 10	172
	RJ	Portable Railroad Edition Jacks and Accessories	100	173-174
	JE / JA	Portable High Tonnage Railroad Jacks and Accessories	55, 100, 150	175-176
	IJ	Inflatable Jacks	1 - 75	177-178
	IJ Accessories	Inflatable Jack Accessories	-	179
	IM	Maintenance Sets	10	180
	SK	10 and 25 Ton Start-Up Kits	10 & 25	181-182
	SJ	Post-Tension and Stressing Jacks and Accessories	20 & 30	183-184



## SELECTING THE RIGHT JACK:

**Step 1:** Select the style jack that best suits the application and your intended lift.

---

**Step 2:** How much clearance, or open space, is available? What is the minimum height?

---

**Step 3:** How much lift, or extension, is required for the load? What is the tonnage needed?

---

## JACK SIZING CONSIDERATIONS:

### 1. What do you need to lift?

Depending on the vehicle or machine you need to lift, you will require appropriate equipment. You don't lift a 20 ton truck with the same equipment you would use to lift a 2 ton vehicle.

To choose the right fit, first look at the hydraulic jack capacity. Today, on the market, you can find various sizes of hydraulic jacks, with a lifting capacity going from 1 ton to 300 tons, and even more.

### 2. What is the free space available?

The best jack in the world is useless if you can't place it under the load. Nowadays, application start height is getting lower and lower, requiring a more compact equipment.

Ground clearance is an important parameter to consider, you need to be able to place the jack without damaging the load.

### 3. What is the maximum lifting height you would need?

To make the best choice, compare the number of strokes and maximum height of each hydraulic jack.

In addition, ask the how many extensions are available with the hydraulic jack. Some of the equipment has 1 or 2 additional extensions, which will cover more applications with the same equipment.

## JACK SERIES:

### Hydraulic Bottle Jacks

Choose from this complete line of premium quality, standard bottle jacks. Ideal for use in any number of industrial lifting and pushing applications.

Tonnage Range: 2-110





#### Inflatable Jacks

Inflatable jacks are easy to use, low maintenance, and lightweight enough to be carried under your arm and moved around in any type of equipment, ideal for mining, vehicle and forklift equipment maintenance and many other uses where your start up height is under a couple of inches.

Non-inflated jacks are less than 25 mm thick, making lifting tasks in small spaces seem routine.

Tonnage Range: 1 - 68,4



#### Maintenance Sets

Matched hydraulic system components, adapters and a hydraulic spreader, contained in a rugged carrying and storage case. Portable sets are ideal for pushing, pulling, lifting, straightening, or clamping at remote job sites.

Types: Manual or electric drive maintenance sets

Tonnage Range: 10 - 25



#### Portable High Tonnage Jacks

Totally self-contained, modular design allows you to change lifting modules to suit your tonnage or height requirements.

Tonnage Range: 55 - 300

Model Shown:

9210A, 9220A, 9105A, 9205A



Features

COMPACT SIDEWINDER MINI JACK FITS IN YOUR PALM AND DELIVERS 5, 10 & 20 TONS OF LIFTING FORCE.

- Retracted height of just 63,5 mm for the smallest jack and 130,2 mm for the 20 ton, allows you to slip this jack into the narrowest of crevices.
- Jacks operate either horizontally or vertically. Handles function in line with base for easier use in confined spaces.
- The perfect addition to any toolbox, this remarkable little jack has multiple uses that are limited only by your imagination. Use it as a jack, or a spreader. Use it to turn your mechanical gear puller (note: puller capacity must match jack capacity) into a hydraulic puller.
- High strength piston and pump linkage for long life.
- All models include over-travel protection.
- Lever Bar included on all models.
- All jacks meet ASME B30.1 standards and carry the Power Team PowerThon™ Lifetime Warranty.

9105A Sidewinder jack is the ideal choice for straightening this crushed box steel .



Ordering Information

Order Number	Cap. (tons)	Stroke (mm)	Retracted Height (mm)	Max. Height (mm)	No. Pump Strokes to Ext. Piston	Saddle Dia. (mm)	Base Size Dia. (mm)	Pump Handle Length (mm)	Handle Effort at Rated Cap. (kg)	Carry Handle	Metric Tons @ 700 bar	Prod. Wt. (kg)
9105A	5	19	63,5	85,9	30	29,0	73,9	240	26	No	4,5	1,9
9205A	5	38	88,9	130,3	38	29,0	73,9	240	26	No	4,5	2,4
9210A	10	30	120,7	149,4	36	42,2	110,0	440	28	No	9,2	5,5
9220A	20	30	130,3	160,3	46	52,8	119,9	605	35	No	18,1	8,0

Model Shown:  
**9012A, 9020A, 9130A**



**Features**

**THE RIGHT CHOICE FOR THOSE LOWER CLEARANCE JOBS OR APPLICATIONS**

- All the quality, features and lifting capacity of the standard jacks in short form. The 12 ton and 20 ton models feature screw extensions for added versatility.
- All jacks operate both vertically and horizontally for use in a variety of lifting, pushing and spreading applications.
- Large base area for increased strength and stability during lifting.
- High strength piston and pump linkage for long life.
- All models include over-travel protection.
- Lever Bar included on all models.
- All jacks meet ASME B30.1 standards and carry the Power Team PowerThon™ Lifetime Warranty.

▶ **9130A Low Profile Hydraulic Bottle Jack provides the lifting capacity and low height for this underground mining application.**



Jacks

▶ **Ordering Information**

Order Number	Cap. (tons)	Stroke (mm)	Retracted Height (mm)	Length of Screw Ext. (mm)	Height with Screw Ext. (mm)	No. Pump Strokes to Ext. Piston ‡	Saddle Dia. (mm)	Base Size (mm)	Pump Handle Length (mm)	Handle Effort at Rated Cap. (kg)	Carry Handle	Metric Tons @ 700 bar	Prod. Wt. (kg)
9012A	12	95	171	76	343	26	48	165x106	605	27	Yes	10,9	6,4
9020A	20	85	181	40	305	22	51	183x129	800	32	Yes	18,1	10,1
9130A	30	79	181	-	260	35	60	192x141	1000	23	Yes	27,2	13,7

‡ 2 Speed: Rapid advance≈40 strokes; Lift mode≈160 strokes.

Model Shown:  
9030A, 9008A, 9112A



Features

IDEAL FOR INDUSTRIAL LIFTING AND PUSHING APPLICATIONS FOR MRO

- Choose from this complete line of premium quality bottle jacks. Ideal for use in any number of industrial lifting and pushing applications.
- The 9110B, 9015B, 9022B and 9033B feature a beveled base which allows the jack to “follow” the load, reducing the chance of dangerous side-loading.
- Jacks feature a screw extension for quicker setup.
- High strength piston and pump linkage for long life.
- All models include over-travel protection.
- Lever Bar included on all models. All jacks can be used in the vertical, angled or horizontal positions.
- Serrated or contoured saddles help stabilize the load for a safer lift.
- 110 ton jack features dual pumps for time-saving two-speed operation.
- All jacks meet ASME B30.1 standards and carry the Power Team PowerThon™ Lifetime Warranty.

Ordering Information

Order Number	Cap. (tons)	Stroke (mm)	Retracted Height Min. (mm)	Length of Screw Ext. (mm)	Height with Screw Ext. (mm)	No. Pump Strokes to Ext. Piston	Saddle Dia. (mm)	Base Size (mm)	Pump Handle Length (mm)	Handle Effort at Rated Cap. (kg)	Carry Handle	Metric Tons @ 700 bar	Prod. Wt. (kg)
9002A	2	114	181	49	344	5	25	110x65	311	34,0	No	1,8	2,2
9003A	3	114	191	60	365	10	29	114x72	489	20,4	No	2,7	2,6
9005A	5	121	200	70	391	12	35	132x76	545	24,9	No	4,5	3,6
9008A	8	121	200	70	391	18	38	152x89	605	34,0	No	7,3	5,5
9112A	12	149	241	80	470	26	48	165x106	605	27,2	Yes	10,9	7,9
9015B	15	156	230	114	505	27	60	130x140 †	700	40,8	No	13,6	8,3
9120A	20	159	270	92	521	22	51	183x129	800	31,8	Yes	18,1	12,9
9022B	22	156	240	109	521	36	60	165x160 †	700	40,8	Yes	20,0	10,7
9030A	30	159	279	—	438	35	60	192x141	1000	22,7	Yes	27,2	18,7
9033B	33	143	240	106	502	56	65	184x176 †	700	39,9	Yes	29,9	14,5
9050A	50	171	305	—	476	36	76	237x187	1000	38,6	Yes	45,4	35,4
9110B	110	156	300	—	456	40/160 ‡	111	339x291	700	35,8	Yes	99,8	70,0

† Comes with a Beveled Base.

‡ 2 Speed: Rapid advance≈40 strokes; Lift mode≈160 strokes.

Model Shown:  
**9006X, 9011X, 9013X**



**Features**

**THE RIGHT CHOICE FOR THOSE LOWER HEIGHT APPLICATIONS FOR MRO.**

- Telescoping jacks offer all of the quality features and capabilities of the standard bottle jack line with a bonus. The super-long stroke of these jacks saves time and effort by eliminating the need to lift or crib. In most applications, the user can place the jack once and complete the lift.
- The 9006X, 9011X and 9013X all feature a unique beveled base that allows the jack to “follow” the load laterally as it is raised, greatly reducing side-loading of the piston.
- High strength piston and pump linkage for long life.
- All models include over-travel protection.
- Lever Bar included on all models.
- All jacks meet ASME B30.1 standards and carry the Power Team PowerThon™ Lifetime Warranty.

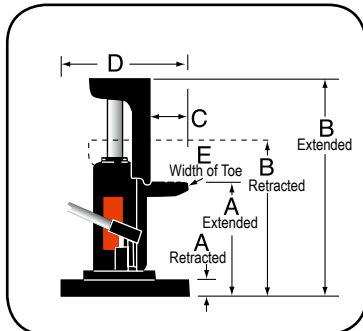
Jacks

**Ordering Information**

Order Number	Cap. (tons)	Stroke (mm)	Retracted Height (mm)	Length of Screw Ext. (mm)	Height with Screw Ext. (mm)	No. Pump Strokes to Ext. Piston	Saddle Dia. (mm)	Base Size Beveled Base (mm)	Pump Handle Length (mm)	Handle Effort at Rated Cap. (kg)	Carry Handle	Metric Tons @ 700 bar	Prod. Wt. (kg)
9006X	6	305	216	—	512	14	44	121x133	700	36	No	5,4	6,4
9011X	11	262	200	68	530	25	41	160x165	700	40	No	10,0	8,8
9013X	13	254	230	84	570	35	48	176x186	700	36	Yes	11,8	11,3



Model Shown:  
**J24T, J55T, J106T**



**Features**

**LOW HEIGHT INDUSTRIAL LIFTING AND PUSHING APPLICATIONS.**

- These bottle jack-style toe jacks are loaded with many of the same features as our standard bottle jacks, but the toe-lift feature and swiveling pump handle socket make them ideal for machinery lifting and positioning.
- An internal pressure relief provides added safety by limiting the jack's lifting capability to the capacity of the toe.
- Spring return is an added feature on the J55T and J106T jacks.
- Swiveling pump handle assembly available on the 5 and 10 ton models. The swiveling jack assembly allows you to access and pump the unit from numerous positions.
- High strength piston and pump linkage for long life.
- All models include over-travel protection.
- Lever Bar included on all models.
- All jacks meet ASME B30.1 standards and carry the Power Team PowerThon™ Lifetime Warranty.

**Technical Dimensions**

Order Number	Ret.	Ext.	Ret.	Ext.	C (mm)	D L x W (mm)	E (mm)
	A		B				
	(mm)	(mm)	(mm)	(mm)			
J24T	16,0	139,7	235,0	355,6	47,8	283 x 240	50,8
J55T	25,4	149,4	292,1	416,1	47,8	283 x 240	76,2
J106T	31,8	181,1	327,2	476,3	63,5	283 x 240	100,1

**Ordering Information**

Order Number	Cap. (tons)	Max. Lift Stroke (mm)	Strokes to Ext. Piston (25 mm)	Handle Effort at Max. Load (kg)	Carry Handle	Metric Tons at 700 bar	Prod. Wt. (kg)
J24T	2	121	14	19	Yes	1,8	8,3
J55T	5	121	22	27	Yes	4,5	24,0
J106T	10	146	31	33	Yes	8,1	38,0

Model Shown:  
J259T, J1095, J58T

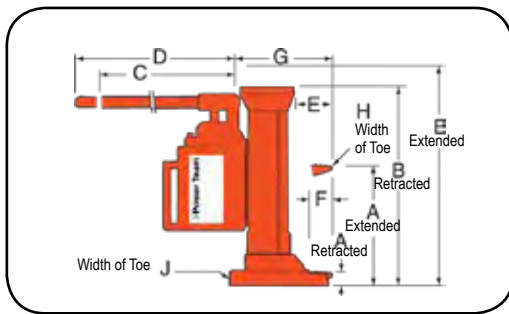


► Features

**HEAVY-DUTY, LOW HEIGHT INDUSTRIAL LIFTING AND PUSHING APPLICATIONS.**

- With lifting points on the toe and on the top, these extremely rugged jacks are ideal for machine lifting, rigging, lift truck service and much more.
- Choose from 5.5 ton, 11 ton, or the 27.5 ton lifting capacity.
- All jacks operate both vertically and horizontally.
- Base, toe and pumping assembly swivel independently, allowing the jack to work in confined areas.
- High strength piston and pump linkage for long life.
- Lever Bar included on all models.
- All jacks meet ASME B30.1 standards and carry the Power Team PowerThon™ Lifetime Warranty.

► J58T hydraulic toe jack is the perfect choice for the pallet jack application.



Jacks

► Technical Dimensions

Order Number	Ret.	Ext.	Ret.	Ext.	C	D	E	F	G	H	J
	A		B								
	(mm)	(mm)	(mm)	(mm)							
J58T	30	238	375	584	368	451	71	56	176	41	130
J109T	30	264	419	654	368	451	76	56	183	64	171
J259T	54	289	505	738	210	756	146	102	267	89	270

► Ordering Information

Order Number	Cap. (tons)	Max. Lift Stroke (mm)	Strokes to Ext. Piston (25 mm)	Handle Effort at Max. Load (kg)	Carry Handle	Metric Tons at 700 bar	Prod. Wt. (kg)
J58T	5,5	210	8	38	Yes	5,0	19,5
J109T	11,0	235	13	40	Yes	10,0	29,0
J259T	27,5	235	21	40	Yes	24,9	92,1

Model Shown:  
**RJ100T24E**



**Features**

**HEAVY-DUTY SELF-CONTAINED INDUSTRIAL LIFTING JACK FOR RAIL MAINTENANCE.**

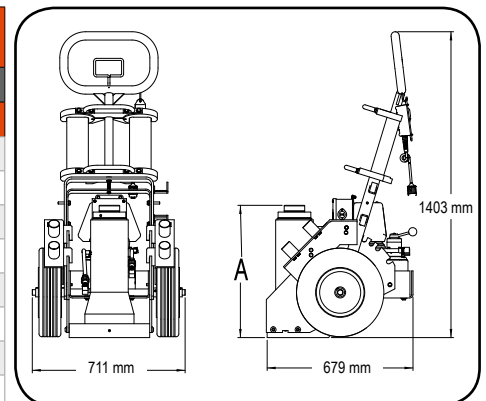
- Wide base cylinder design for stability.
- Double-acting cylinder with locking collar.
- The bottom of the cylinder is a bolted joint, using the base plate as part of the cylinder. This will allow for service of even the oldest or most abused jacks.
- Cribbing storage rack location is such that it allows easy access during cribbing placement and removal.
- Jack has a 6,1 m remote pendant for user safety and control.
- Easy to maneuver, large tires and small footprint make it easy to get into tight spaces.
- Adjustable handle, allows the user to easily to position the jack under loads.

**Technical Specifications**

Type of Pump	Low Pressure Pump		High Pressure Pump		Current Draw at Max. Internal Relief Settings (amps)	Unload Pressure (bar)	Internal Relief Pressure (bar)	Tank (l)	Valving
	Flow (l / min.)	Pressure (bar)	Flow (l / min.)	Pressure (bar)					
<b>Electric</b>	7,2	30	1,0	700	28	700	7,6	4-Way / 3-Pos. Tandem Center Manual	
<b>Air</b>	5,4		0,5		NA				37 - 53,8

**Ordering Information**

Order Number	Description	Stroke (mm)	Retracted Height
			A (mm)
RJ100T24E	Jack, 100 Ton RR 610 mm Retracted, Electric	356	610
RJ100T37E	Jack, 100 Ton RR 940 mm Retracted, Electric	686	940
RJ100T24A	Jack, 100 Ton RR 610 mm Retracted, Air	356	610
RJ100T37A	Jack, 100 Ton RR 940 mm Retracted, Air	686	940
RJ100T24A-C*	Jack, 100 Ton RR 610 Retracted, Air with Crib Block	356	610
RJ100T24E-C*	Jack, 100 Ton RR 610 Retracted, Elect with Crib Block	356	610
RJ100T37A-C*	Jack, 100 Ton RR 940 Retracted, Air with Crib Block	686	940
RJ100T37E-C*	Jack, 100 Ton RR 940 Retracted, Elect with Crib Block	686	940
RJ100T24A-E**	Jack, 100 Ton RR 610 Retracted, Air with Extension	356	610
RJ100T24E-E**	Jack, 100 Ton RR 610 Retracted, Elect with Extension	356	610
RJ100T37A-E†	Jack, 100 Ton RR 940 Retracted, Air with Extension	686	940
RJ100T37E-E†	Jack, 100 Ton RR 940 Retracted, Electric with Extension	686	940



\* C models include RJ-CB-S crib set

\*\* 610 mm– E models include RJ-EXT-S1 set

† Shipping weights 940 mm– E version includes RJ-EXT-S set

**EXTENSIONS**



Order No.	Description
RJ-EXT5	Assembly, Extension 127 mm 100 Ton RR Jack
RJ-EXT7	Assembly, Extension 178 mm 100 Ton RR Jack
RJ-EXT9	Assembly, Extension 220 100 Ton RR Jack
RJ-EXT11	Assembly, Extension 279 mm 100 Ton RR Jack
RJ-EXT14	Assembly, Extension 356 mm 100 Ton RR Jack
RJ-EXT18	Assembly, Extension 457 mm 100 Ton RR Jack
RJ-EXT-S	Set, Extensions 100 Ton RR Jack 178 mm, 229 mm, 356 mm
RJ-EXT-S1	Set, Extensions 100 Ton RR Jack 178 mm, 279 mm, 457 mm

**CRIBBING BLOCKS**



Order No.	Description
RJ-CB1	Assembly, Crib Block 25 mm 100 Ton RR Jack
RJ-CB3	Assembly, Crib Block 76 mm 100 Ton RR Jack
RJ-CB5	Assembly, Crib Block 127 mm 100 Ton RR Jack
RJ-CB10	Assembly, Crib Block 254 mm 100 Ton RR Jack

**SPACERS**



Order No.	Description
RJ-SP-1	Spacer, 25 mm
RJ-SP-2	Spacer, 51 mm
RJ-SP-3	Spacer, 76 mm
RJ-SP-S	Spacer Set 100 ton RR Jack 25 mm, 51 mm, 76 mm

**SWIVEL CAPS**



Order No.	Description
RJ-SC-1	Assembly, Swivel Cap 100 Ton RR Jack

Model Shown:  
**JEM5526,PMA55S,PME55S**



Air pump  
and cart module

Electric pump  
and cart module

**Features**

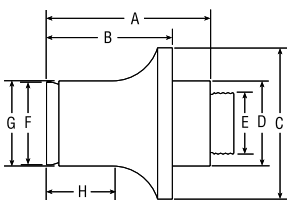
**PORTABLE AND COMPACT, IDEAL FOR LOCOMOTIVE/RAIL CAR, MINING AND HEAVY EQUIPMENT MAINTENANCE.**

- Modular design allows you to change lifting modules to suit your tonnage or height requirements.
- Select the collapsed height to fit your most frequent application and add jacking modules to suit your needs.
- Exclusive load control system provides positive, chatter-free control when lowering the load.
- Remote operation for maximum operator safety and control, motor or/an valve options.
- Easy to maneuver with large tires and small "footprint" make it easy to scoot into the tightest quarters.
- Adjustable, heavy-duty handle makes this jack easy to move, position under vehicles.
- Shielded and sheltered hydraulic lines for safer, longer, trouble-free service.



Jacks

**JACK MODULE EXTENSION**



Order Number	Cap.	A	B	C	D	E	F	G	H	Prod. Wt. (kg)
	(tons)	(mm)	(mm)	(mm)	(mm)	(in.)	(mm)	(mm)	(mm)	
58945	55	223,8	173,0	127,0	66,8	1 11/18-8UNC	63,5	66,8	92,2	9,5
58943	100	228,6	177,8	174,8	98,6	2 3/4-12UNC	95,3	98,6	95,3	18,1
58944	150	219,2	168,4	203,2	114,3	3 1/4-8UNC	111,3	114,3	88,9	22,7

**Ordering Information - Cribbing Block sets - Includes one Jack Module Extension**

Order Number	55 Ton CBS55		100 Ton CBS100		150 Ton CBS150		200 Ton CBS200	
No. in Set	(mm)	(mm)	(mm)	(mm)	(mm)	(mm)	(mm)	(mm)
A	381,1	76,2	38,1	76,2	38,1	76,2	38,1	76,2
B	44,4	82,5	44,4	82,5	44,4	82,5	44,4	82,5
C	139,7	139,7	139,7	139,7	222,2	222,2	254,0	254,0
Jack Module Ext.	173,0		177,8		168,3		168,3	
Total Stack Ht.	515,9		520,7		512,2		512,2	
Product Weight (kg.)	16,3		30,9		38,6		47,7	



**Pump Module, include Remote Pendant**

Pump	Motor Only	Motor & Valve
Air	PMA55	PMA55S
Electric	PME55	PME55S
Electric	PME355	PME355S
Air	PMA355	PMA355S



**Jack Modules**

Tonnage	Cylinder Stroke (mm)	Collapsed Height		
		660,4 mm	838,2 mm	1143,0 mm
55	333	JM25	JM35	JM45
100	333	JM210	JM310	JM410
150	461	JM215 †	JM315	JM415
200	461	JM220 *	JM320	JM420
300	333	<b>Contact Factory</b>		

\* Collapsed height; 711 mm and stroke 333 mm  
† Stroke 333 mm.

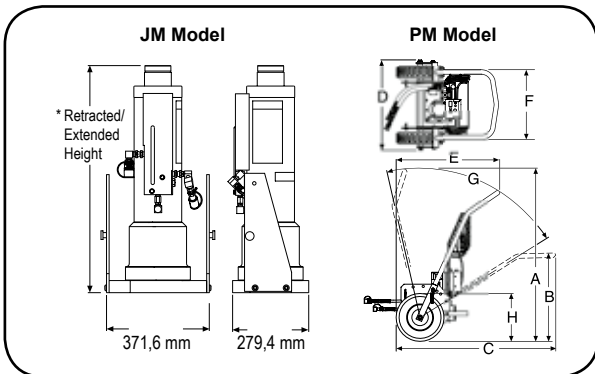


**PUMP & CART MODULES**

Pump and cart modules contain hydraulic pump, cart, remote control and all hoses and fittings required to connect to a jack module.

**JACK MODULES**

Jack modules easily separate from the pump and cart module.



Jacks

**Technical Dimensions**

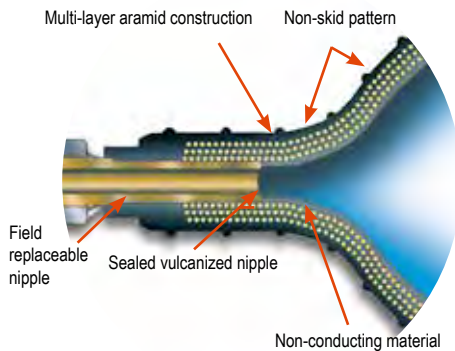
Model Series	A (mm)	B (mm)	C (mm)	D (mm)	E (mm)	F (mm)	G* (deg.)	H (mm)
PMA	1464	752	1353	762	872	594	70°	406 Tire Dia.
PME								

\* Total range with varying degree increments.

**Ordering Information - Complete with Pump and Jack Modules, Fully Assembled**

Order Number	Cap. (tons)	Retracted Height (mm)	Extended Height (mm)	Stroke (mm)	Pump Type	Power Required	Valve Type	Remote Control
JEM5526	55	660,4	994	333	Electric	13/25 amps	Manual	Motor Only
JAM10033	100	838,2	1172	333	Air	1,4 cm <sup>3</sup> /min @ 6 bar	Manual	Motor Only
JAR10033	100	838,2	1172	333	Air	1,4 cm <sup>3</sup> /min @ 6 bar	Air Pilot	Motor & Valve
JEM15026	150	660,4	994	460,4	Electric	25 amps	Manual	Motor Only
JAM15033	150	838,2	1173	460,4	Air	1,4 cm <sup>3</sup> /min @ 6 bar	Manual	Motor Only

Model Shown:  
IJ2211T



The non-skid reinforced inflatable jack is perfect for many applications



Features

LOW HEIGHT, HEAVY-DUTY INDUSTRIAL INFLATABLE AIR JACKS.

- Non-inflated jacks are less than 25,4 mm thick, making lifting tasks in small spaces seem routine.
- Constructed of non-conducting, high quality rubber material with multi-layer aramid fiber reinforcement.
- The top and bottom surface of the jack has a skid resistant, interlocking pattern to assist in alignment of two jacks being used together.
- Heavy attachment handles are provided on the two largest jacks for attachment of a rope or hook to help in positioning the jack.
- The jacks can be used at ambient temperatures of -20°C to + 50°C.
- The controller, shut-off and air hoses are all equipped with an industrial interchange style quick-disconnect air coupler. Female half coupler bodies have a locking collar to help the operator avoid accidentally disconnecting the jack while under load.
- Single jack controller with “dead man” control (part no. 350090) can be used individually, or in multiples to regulate the number of jacks desired.

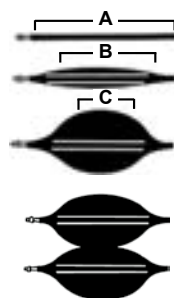


Safety Hints

1. Inspect before and after each use.
2. Replace if any signs of degradation or wear that may affect safety or performance.
3. Keep the product clean.
4. Store properly.



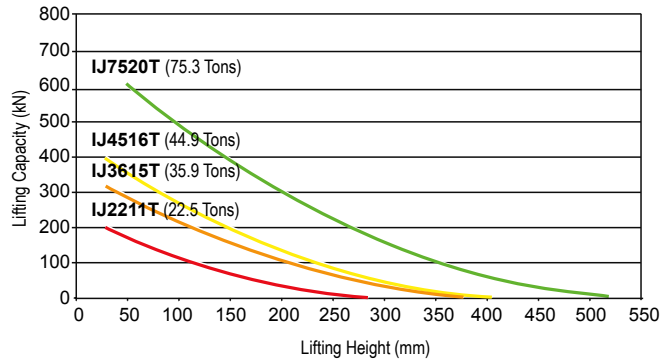
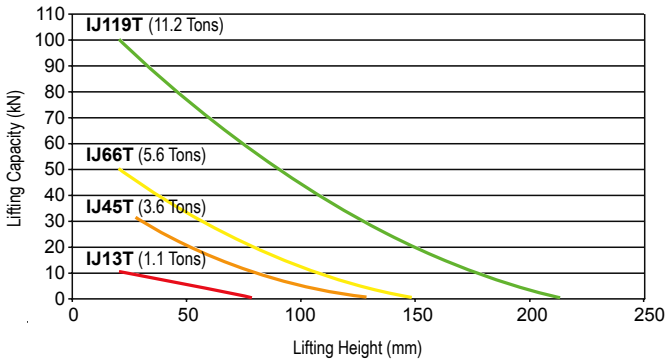
Maximum Effective Lifting Area



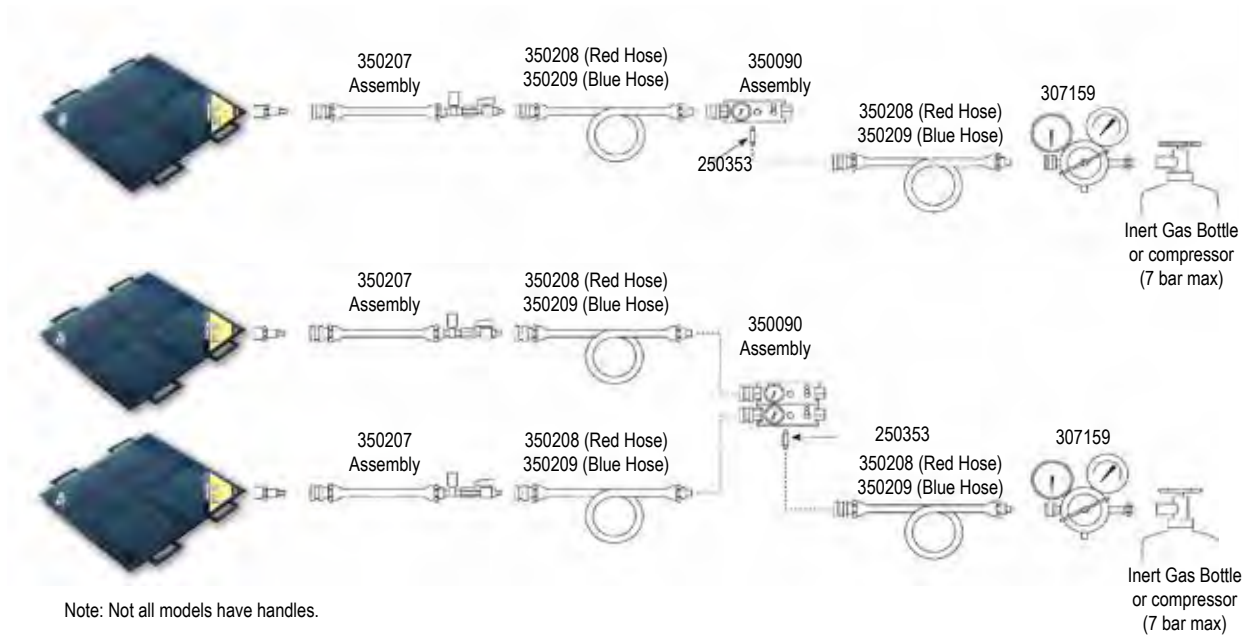
All lifting capacities mentioned in the charts are measured at the maximum effective lifting area (A). As the jack is inflated (B), this effective area decreases (C) due to the rounded shape of the jack. Lifting capacity also decreases (see performance chart).

Stack up to two jacks together to increase effective lifting height.

## Performance Specifications



## Typical Set-Up




## Ordering Information

Order Number	Lifting Cap. (metric tons)	Lifting Height (mm)	Air Volume (l)	Water Volume (l)	Length (mm)	Width (mm)	Thickness (mm)	Prod. Wt. (kg)
IJ13T	1,0	79	3,3	0,7	152	152	22	0,6
IJ45T	3,3	130	16,2	1,8	229	229	22	1,5
IJ66T	5,1	150	22,5	2,5	279	279	22	2,0
IJ119T	10,2	216	76,5	8,5	381	381	25	4,1
IJ2211T	20,4	290	189	21	508	508	25	7,0
IJ3615T	32,6	381	450	50	660	660	25	13,2
IJ4516T*	40,8	404	558	62	711	711	25	15,0
IJ7520T*	68,3	521	1206	134	914	914	25	24,0


\* Included molded carry handles.




**PRESSURE REDUCING VALVE**

	Order No.	Description
	307159	Pressure reducing valve. Allows use of bottled gases to operate jacks (works on CGA-580 Nitrogen/Argon/Helium bottles). Contains standard bottle fitting on inlet and 1/4" industrial interchange female outlet. Wt., 1,8 kg.


**AIR CONTROLLER - SINGLE JACK**

	Order No.	Description
	350090	Air controller for single jack. Equipped with relief valve and pressure gauge. Wt., 0,9 kg.


**SHUT-OFF HOSE WITH SHUT-OFF VALVE AND PRESSURE RELIEF VALVE**

	Order No.	Description
	350207	Shut-off hose with shut-off valve and pressure relief valve. Includes a female and male quick coupler. Wt., 0,3 kg.


**AIR HOSES**

	Order No.	Description
	350208	Air hose. Red, 9 m long., 3/8" I.D., includes 250341 female and 250342 male quick coupler. Wt., 2,7 kg.
	350209	Air hose. Blue, 9 m long., 3/8" I.D., includes 250341 female and 250342 male quick coupler. Wt., 2,7 kg.


**FEMALE QUICK COUPLER**

	Order No.	Description
	250343	Female quick coupler. 1/4" industrial interchange x 1/8" NPT female. Wt., 0,05 kg.


**MALE QUICK COUPLER**

	Order No.	Description
	250353	Male quick coupler. 1/4" industrial interchange x 1/8" NPT male. Wt., 0,05 kg.


**FEMALE QUICK COUPLER**

	Order No.	Description
	250682	Female quick coupler. 1/4" industrial interchange x 1/4" NPT male. Wt., 0,05 kg.


**CONNECTOR 1/8" NPT MALE**

	Order No.	Description
	15235	Connector 1/8" NPT male x 1/4" NPT female. Wt., 0,05 kg.

**FEMALE QUICK COUPLER**

	Order No.	Description
	250341	Female quick coupler. 1/4" industrial x 3/8" I.D. hose. Wt., 0,2 kg.

**MALE QUICK COUPLER**

	Order No.	Description
	250342	Male Quick coupler. 3/8" I.D. Hose. Wt., 0,05 kg.

Model Shown:  
**IM10E, IM10H**



NOTE: Actual storage box may differ from photo.

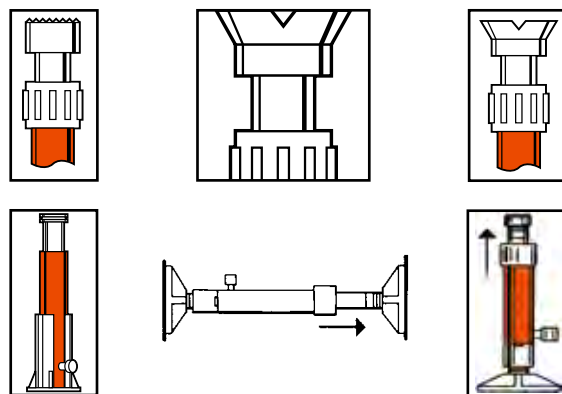
### Features

#### TURNKEY, EXTREMELY VERSATILE MECHANICS MAINTENANCE KIT FITS MANY APPLICATIONS.

- Matched hydraulic system components, adapters and hydraulic spreader, contained in a rugged carrying and storage case.
- Portable sets are ideal for pushing, pulling, lifting, straightening, or clamping at remote job sites.
- Cylinders in set are rated at 10 tons at 700 bar. Set components are designed for full rated capacity of cylinders.
- Set IM10H/IM10L includes hand operated pump. Set IM10E includes the Quarter Horse® electrically driven portable power unit.



### Application Flexibility



Jacks

### Ordering Information

Order No.	IM10E
<b>CONTENTS OF SET</b>	<b>Items Included below</b>
Hydraulic spreader	HS2000
Hand pump (electric)	PE102
Hydraulic gauge (700 bar)	9041
Tee adapter	9670
Hose & coupler assembly	9754
90° V base	25395
Threaded coupler	25664
Serrated saddle	31772
Flat base	32325
Extension rod - 127 mm length	350897
Extension rod - 254 mm length	38909
Extension rod - 457 mm length	350898
Cylinder support base	420062
Cylinder, 10 ton, 257 mm stroke	C106CBT
Cylinder, 10 ton, 156 mm stroke	C1010CBT
Storage box	350722
Prod. Weight (kg)	48,1

Order No.	IM10H	IM10L
<b>CONTENTS OF SET</b>	<b>Items Included Below</b>	<b>Items Included Below</b>
Hydraulic spreader	HS2000	HS2000
Hand pump	P59	P59L
Hydraulic gauge (700 bar)	9041	9041
Tee adapter	9670	9670
Hose & coupler assembly	9754	9754
90° V base	25395	25395
Threaded coupler	25664	25664
Serrated saddle	31772	31772
Flat base	32325	32325
Extension rod - 127 mm length	350897	350897
Extension rod - 254 mm length	38909	32890
Extension rod - 457 mm length	350898	350898
Cylinder support base	420062	420062
Cylinder, 10 ton, 156 mm stroke	C106CBT	C106CBT
Storage box	350722	350722
Prod. Weight (kg)	40,4	36,8

Model Shown:  
**SK10TE**



**Features**

**VERSATILE 10 TON MAINTENANCE KIT  
CONVENIENTLY PACKAGED IN A BOX.**

- 10 ton Start-Up Kit covers a range of lifting, shifting, and positioning needs
- Broad range of cylinder types and strokes to fit many applications
- Neatly packaged in a durable, molded storage case to securely house your equipment and is ready to use upon opening
- SK10TE kit is CE Compliant



**Storage Case Dimensions**



Plastic Molded Case, 800 mm (L) x 521 mm (H) x 292 mm (W).

**Ordering Information**

Kit Contents - Order no: SK10TE			
Hand Pump	Usable Oil Cap. (l)	Volume Per Stroke Low / High Press. (ml)	Weight (kg)
P19L	443	4,1 / 0,9	2,3
Gauge	Type	Primary Units	Face Diameter (mm)
9040E	analog	bar	63,5
Hose	Length (m)	Burst Rating	I.D. (mm)
9754E	1,8	4:1	6,5
Cylinders	Metric Tons	Stroke (mm)	Collapsed Height (mm)
C106C	9,1	155,6	247,7
RSS101	9,1	38,1	88,9
RH123	10,9	76,2	184,2
RLS100	10,9	11,1	44,5
Spreader	Min. Clearance (mm)	Max Spread (mm)	Weight (kg)
HS2000	14,2	101,6	2,2
Case	Material	L x H x W (mm)	Weight w/o Product (kg)
2008632	Heavy-Duty Plastic	800 x 520 x 292	5,8

Model Shown:  
**SK25T**



**NOTE:** Storage cases are not included with the 25 ton startup kits, they must be ordered separately.

**Features**

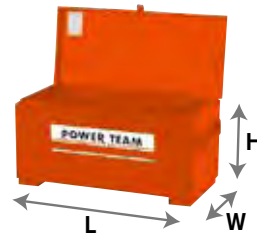
**THE RIGHT CHOICE FOR THOSE HIGHER TON MAINTENANCE KIT NEEDS.**

- 25 Ton Start-Up Kit covers a range of lifting, shifting, and positioning needs
- Broad range of cylinder types and strokes to fit many applications
- SK25TE kit is CE Compliant



**Optional 25 Ton Storage Cases**

**MB5**



**308435OR9**



Order No.	Description
<b>MB5</b>	Metal Box Construction, 813 mm (L) x 483 mm (W) x 356 mm (H)
<b>308435OR9</b>	Wooden Box Construction, 914 mm (L) x 445 mm (W) x 356 mm (H)

**Ordering Information**

Kit Contents - Order no: SK25TE			
Hand Pump	Usable Oil Cap. (l)	Volume Per Stroke Low / High Press. (l)	Weight (kg)
P59L	1082	12 / 2,6	4,1
Gauge	Type	Primary Units	Face Diameter (mm)
9040E	analog	bar	63,5
Hose	Length (m)	Burst Rating	I.D. (mm)
9754E	1,8	4:1	6,5
Cylinders	Capacity* Short Tons	Stroke (mm)	Collapsed Height (mm)
C256C	22,7	158,8	273,0
RSS302	27,2	61,9	117,5
RH302	27,2	63,5	158,8
RLS300	27,2	12,7	58,7
Spreader	Min. Clearance (mm)	Max Spread (mm)	Weight (kg)
HS2000	14,2	101,6	2,2

\* Values shown in short tons (2,000 lb). To convert to long tons, multiply by 0.893. To convert to metric tons, multiply by 0.907.

Model Shown:  
**SJ2010, SJ3010**



**Features**

**ONE OF THE MOST DURABLE MONO-STRAND JACKS IN THE INDUSTRY.**

- Ideally suited for work on slab-on-grade where dirt, heat and high volume use take their toll.
- Available in single or double-acting models.
- Standard single-acting units have a 254 mm stroke.
- Standard double-acting units have an 152,4 mm stroke.
- Service repair is simple and components are long lasting and easily replaced.
- 76,2 mm detachable seater nose assembly easily replaced with optional 152,4 mm nose assembly.
- The jack of choice for high-rise and elevated work, thanks to fast return time and light weight.
- All hydraulic fluid controls are internal for more efficient and safer operation during tensioning and retraction.



**Optional Dead-end Seater**

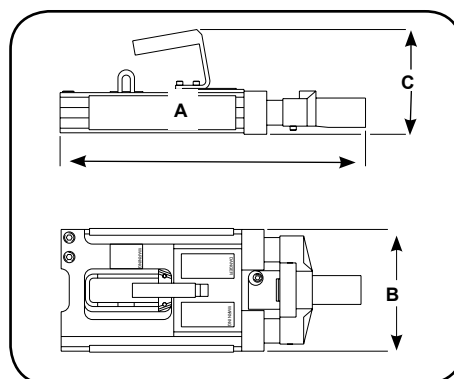
Dead-end seaters for production work and field work available on special order. (Part #400120)

**Multi-strand post-tensioning application**



► **Technical Dimensions**

Order No.	A	B	C	Wt. (kg)
	(mm)	(mm)	(mm)	
SJ2010	533,4	228,6	152,4	24,9
SJ2010P	558,8	259,2	177,8	34,5
SJ3010	558,8	259,2	177,8	34,5
SJ3010P	558,8	259,2	177,8	34,5
SJ2010DA	457,2	177,8	152,4	19,1
SJ3010DA	457,2	203,2	152,4	23,6



► **Ordering Information**

Order Number	Cap. (tons)	Stroke (mm)	Oil Cap. (l)	Strand Dia. (mm)	Seater Type (mm)	Int. Press. at Cap. (mm)	Metric Tons at 700 bar	Description	Recommended Pumps for this Stressing Jack	Prod. Wt. (kg)
SJ2010	20	254	0,7	11,1 - 12,7	Spring	227,3	20,3	Post-tension jack with spring, seater 12,7 mm strand.	PE554P/PE604T	25
SJ2010P	20	254	0,7	11,1 - 12,7	Power	227,3	20,3	Post-tension jack with power seater, 12,7 mm strand.	PE554PT/PE604PT	25
SJ2010DA	20	216	0,9	11,1 - 12,7	Power	192,4	23,9	Double-acting post-tension jack with power seater, 12,7 mm strand.	PE554PT/PE604PT	19
SJ3010	30	254	1,0	11,1 - 15,2	Spring	242,5	28,5	Post-tension jack with spring seater, 15,2 mm strand.	PE554P/PE604T	34,5
SJ3010P	30	254	1,0	11,1 - 15,2	Power	242,5	28,5	Post-tension jack with power seater, 15,2 mm strand.	PE554PT/PE604PT	34,5
SJ3010DA	30	216	1,1	11,1 - 15,2	Power	191,87	36,0	Double-acting post-tension jack with power seater, 15,2 mm strand.	PE554PT/PE604PT	23,6

**STRESSING JACK ACCESSORIES AND HOSES**

Used with Stressing Jack	 76,2 mm Nose Piece #	 76,2 mm Wedge Seater #	 152,4 mm Nose Piece	 152,4 mm Wedge Seater #	 9,5 mm Dia. Gripper Set #	 11,1 mm Dia. Gripper Set #	 12,7 mm Gripper Set #	 15,2 mm Gripper Set #	 Replacement Gripper Handle #	 Gripper Retainer Plate # (2 used)
SJ2010	252564	252562	252759	252763	252568	252761	252567	NA	252570	252565
SJ2010P	252564	252562	252759	252763	252568	252761	252567	NA	252570	252565
SJ2010DA	252543	252542	252760	252764	252650	252762	252555	NA	252556	252544
SJ3010	252564	252562	252759	252763	252568	252761	252567	252569	252570	252565
SJ3010P	252564	252562	252759	252763	252568	252761	252567	252569	252570	252565
SJ3010DA	253363	253361	253364	253362	253390	NA	253391	253365	252556	252544

Jacks