

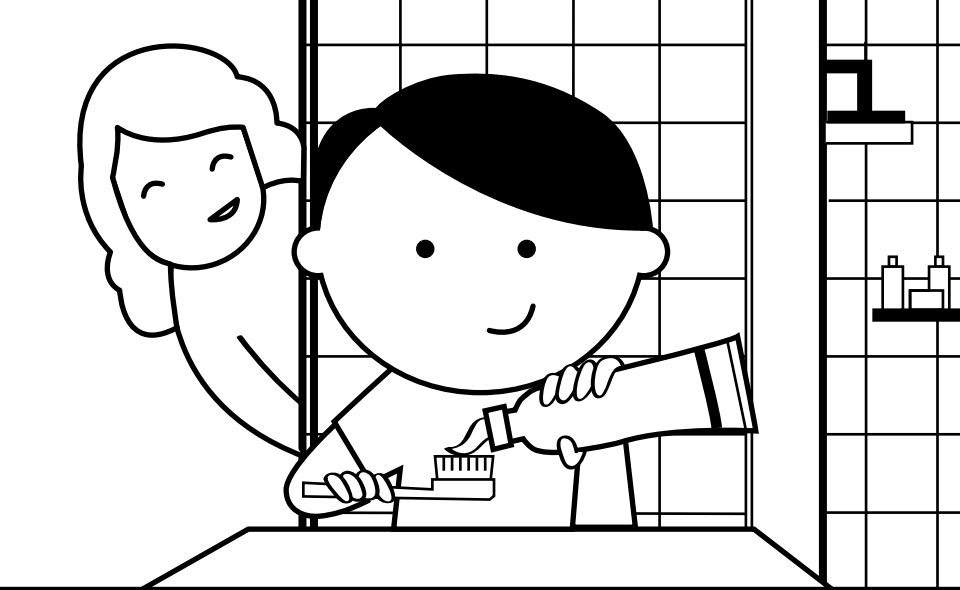
WELCOME TO

SOLUTION CITY

WHERE LIFE IS BETTER BECAUSE OF
THE THINGS WE HELP MAKE.

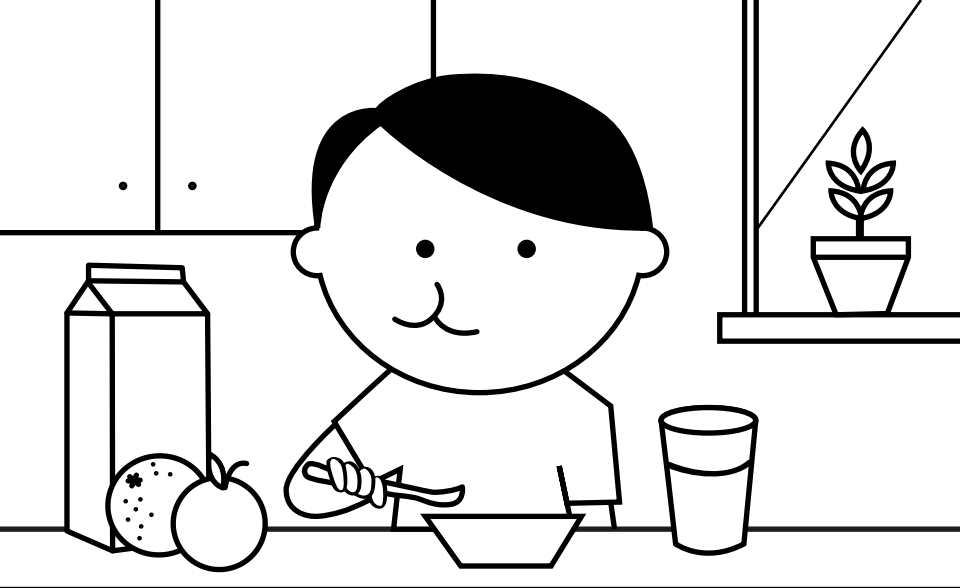


The impact of SPX FLOW Solution Makers is everywhere you look.
Just take a stroll through Solution City to see for yourself.



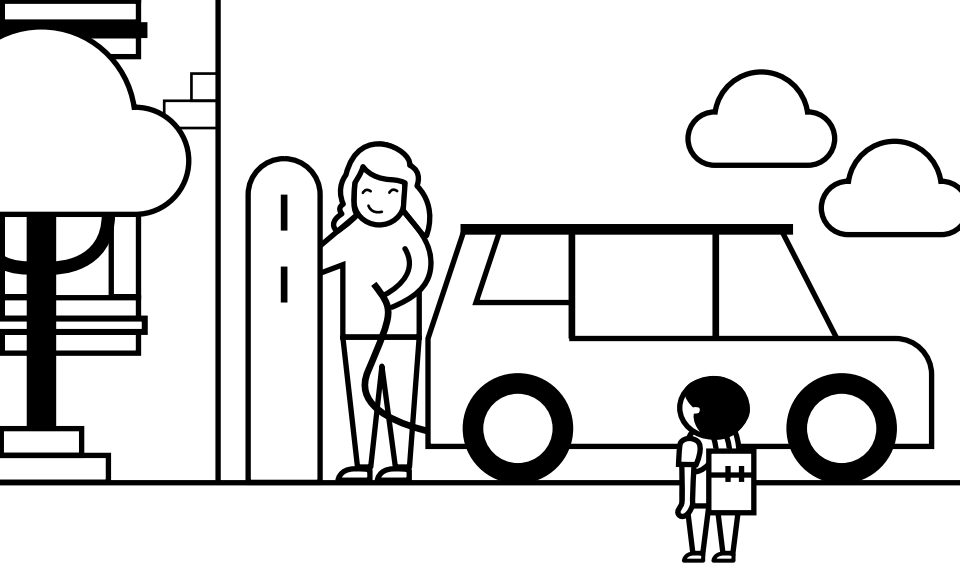
**Rise and shine and get ready for a bright summer day.
“Don’t forget to brush your teeth!” Mom says.**

From toothpaste and body wash to lotion and sunscreen, SPX FLOW mixing, blending and heat transfer systems are used to help create essential products that we use every day.



Every great day starts with a healthy breakfast.

Our Nutrition & Health equipment and systems are used to make delicious and nutritional products like yogurt, milk and even plant-based drinks from grains and nuts.



Fully charged and ready to go! Time to head into town.

Our mixers, pumps and a range of other products are used to drive the global transition toward sustainable energy in the electric vehicle market.



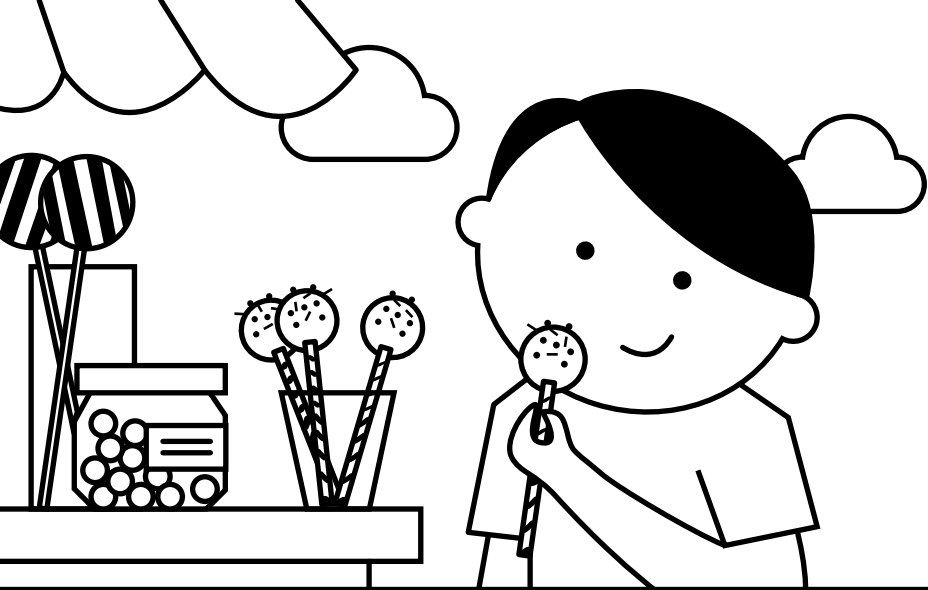
**Over the bridge and around the tall buildings,
I love living in my city.**

SPX FLOW hydraulic lifting equipment is used across the world to help construct bridges and buildings.



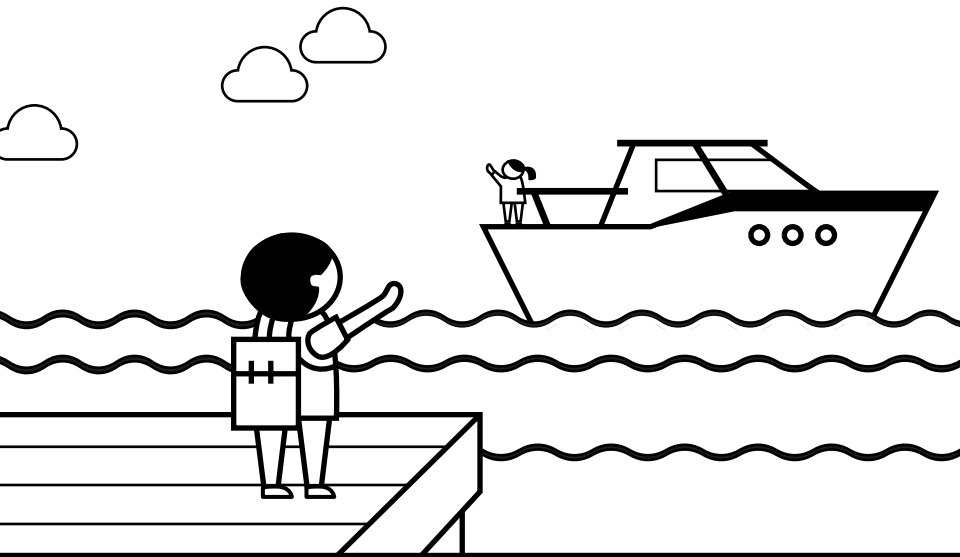
A quick stop to pick up Grandma's medicine.

Did you know that SPX FLOW helps people around the world stay healthy? Our equipment and systems serve the pharmaceutical industry in a range of ways including blending active pharmaceutical ingredients in medications and vaccines.



Time for a little something sweet as a fun summer treat.

From the colorful candy coating on your favorite chocolate treat to the delicious chocolate itself, our technologies help make life a little sweeter.



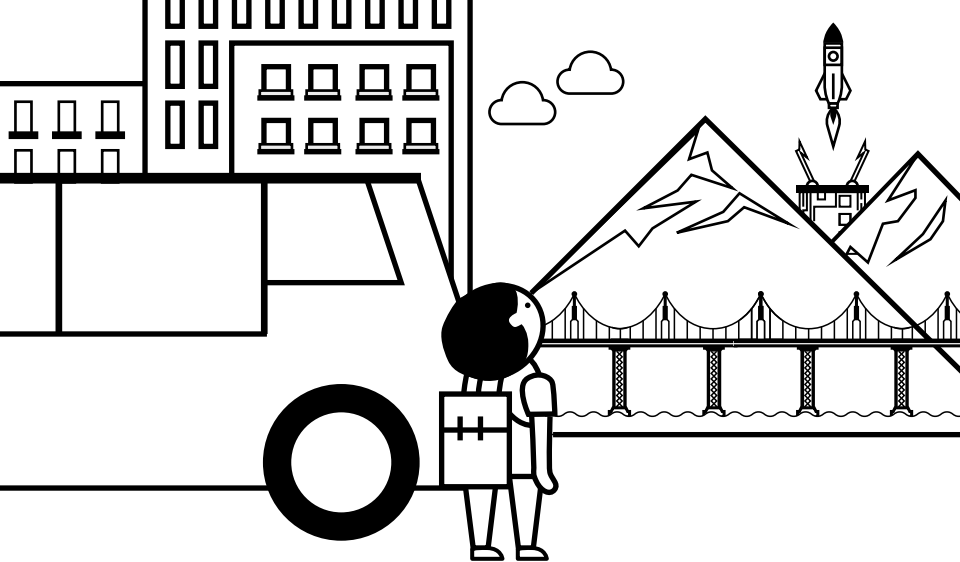
**My friend Kim is learning to drive a boat.
Look at her go!**

SPX FLOW's range of recreational marine pumps make your time on the water safe and enjoyable.



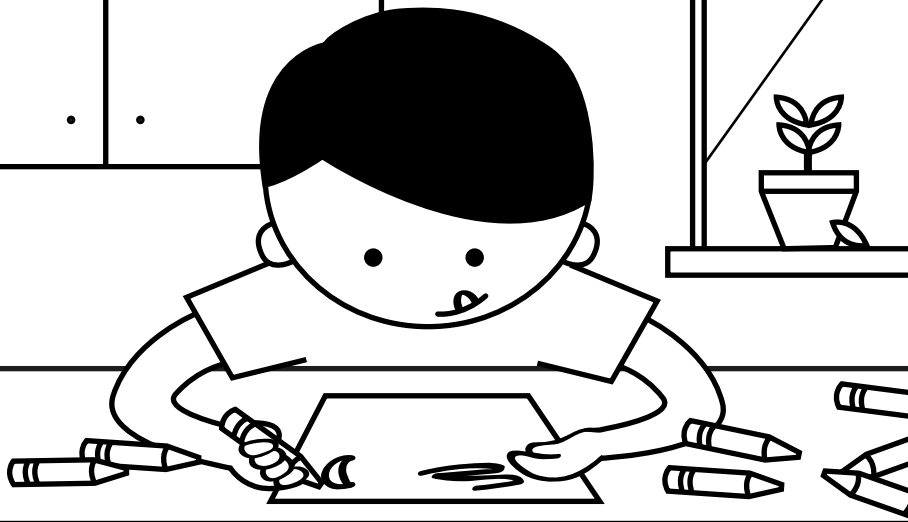
**One more stop to pick up our laundry
before heading home.**

Our pumps and systems help make laundry detergent that keep your clothes fresh and clean.



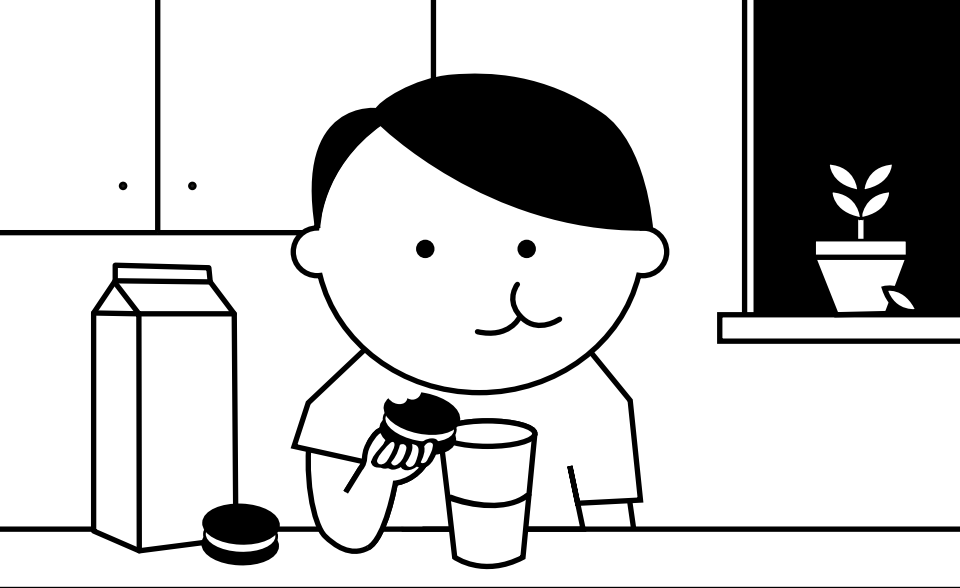
I wonder if I will ever become an astronaut?

Did you know that SPX FLOW air and gas treatment products are used to provide essential dry air for the aerospace industry?



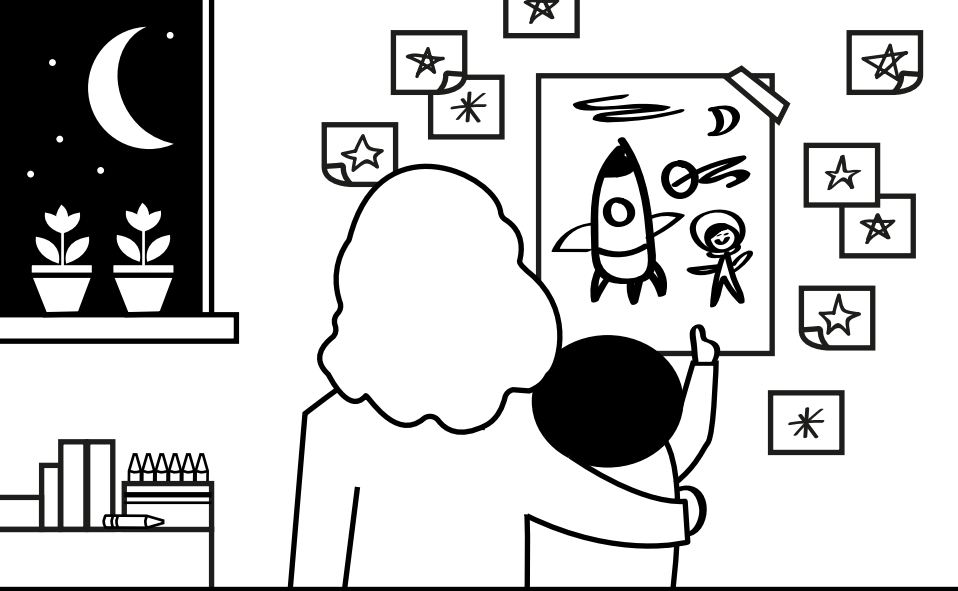
**Mom says that to reach my dreams,
I have to visualize them.**

Our pumps and valves are essential for making the vibrant colors of crayons.



After a healthy dinner, it's time for dessert.

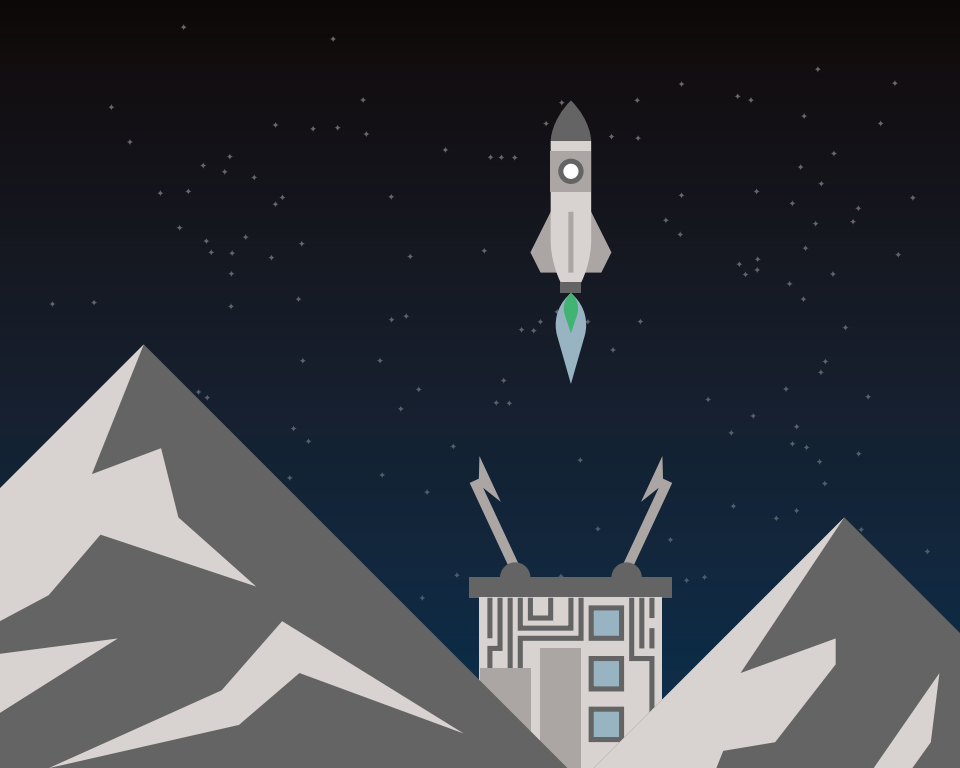
Everyone loves a sandwich cookie dunked in a glass of delicious milk. Well, SPX FLOW provides processing equipment and systems used to make the creamy cookie filling, and nutritious milk that's perfect every time.



One last thing to do to end such a great day.

SPX FLOW mixers are used to help blend the adhesives used in products you use every day such as adhesive hooks and sticky notes.

As you can see, the work our SPX FLOW Solution Makers do impacts people everywhere every day. And amazingly, the items we reference in our story of Solution City barely scratch the surface on all the things we help make. From air treatment and homogenization to mixing & blending and thermal processing, we all contribute to making life better for people across the globe. And we're primed to continue doing so well into the future. Just like a rocket ship launching into outer space.





To support our sustainability efforts,
we encourage you to print on recycled paper.