



SNR STANDARD SERIES

Top - Side Entry Mixer

A world-class series of agitators.

SNR agitators with future oriented design satisfy even non-standard requirements for medium sized power and torque needs.

Benefits include compact dimensions, quiet operation and a wide range of sealing and drive systems. Versatility makes our standard agitators the right choice for a multitude of different production and process applications.



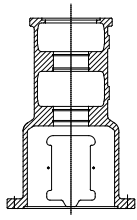
Advantages

- Fixed or variable speed drive systems as process needs dictate.
- Elastic coupling installed for maximum protection and designed to lower any torque surges and oscillations.
- Robust bearing housing with integrated coupling and seal lanterns.
- Long service life double roller bearing.
- Lip seal, stuffing box or mechanical seal with DIN dimensions.
- Lip seal, stuffing box or mechanical seal with dimensions to DIN standard 28138
- Mounting flanges to DIN 28155 or ANSI or mounting plates for open-vessel support structures

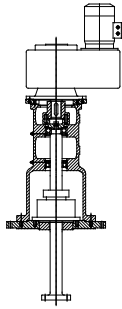
TECHNICAL DATA

Drive	IEC/ NEMA Motor plus parallel shaft gear or helical bevel gear or belt drive
Shaft seal	SL lip seal, SD .5 DIN stuffing box, GDS mechanical seal
Shaft Diameter	40 - 125 mm
Motor Power	1,1 - 110 kW
Key Applications	Chemical Processing: Adhesives & Sealants, Inorganic Chemicals, Plastic Resins, Synthetic Rubber, Paints & Coatings, Specialty Chemicals, Pharmaceutical: Biotech Fermenters

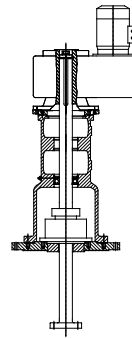
Models



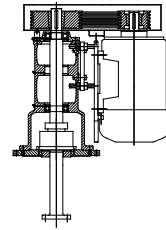
SNR - Basic design



SNR-E - 2 bearings and flexible coupling



SNR-H - 1 bearing and hollow-shaft gearbox

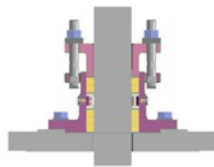


SNR-K - 2 bearings and belt drive

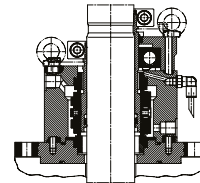
Standard Seals



SL Lip Seal Open or closed vessels, protected against drip and spray water.



SD .5 DIN Stuffing Box
Classical shaft seal with lubricating connection, short or high design.
 p_{max} to approx. 4 bar
 t_{max} to approx. 130° C (without additional cooling flange) dimensions to DIN standard 28163



GDS Mechanical Seal Unpressurized or pressurized double-acting mechanical seal. Air cooled, optional water cooling. No integrated bearing. Suitable for heavy – duty industrial applications. Dimensions to DIN standard 28138.

pressures \leq 7 bar with thermosyphon system VB.
pressures \leq 30 bar with pressure compensator.

$t < 200^{\circ}\text{C}$ without heat trap
 $t \leq 300^{\circ}\text{C}$ with heat trap

Housing made of stainless steel. Thermosyphon system stainless steel. Water or air cooled.

SPXFLOW®

SPX FLOW, Inc. reserves the right to incorporate our latest design and material changes without notice or obligation. Design features, materials of construction and dimensional data, as described in this bulletin, are provided for your information only and should not be relied upon unless confirmed in writing. Please contact your local sales representative for product availability in your region. The green "X" is a trademark of SPX FLOW, Inc.

For more information, visit www.spxflow.com.