



VORTEX DIN SERIES

Top Entry Mixer

Revolutionary Agitator

VORTEX agitators have revolutionized agitator field maintenance. The innovative design allows the lateral removal of the mechanical seal in less than 1 hour. The advanced modular system integrates easily in any environment. The VORTEX mixer can be a top entry or bottom entry mixer.

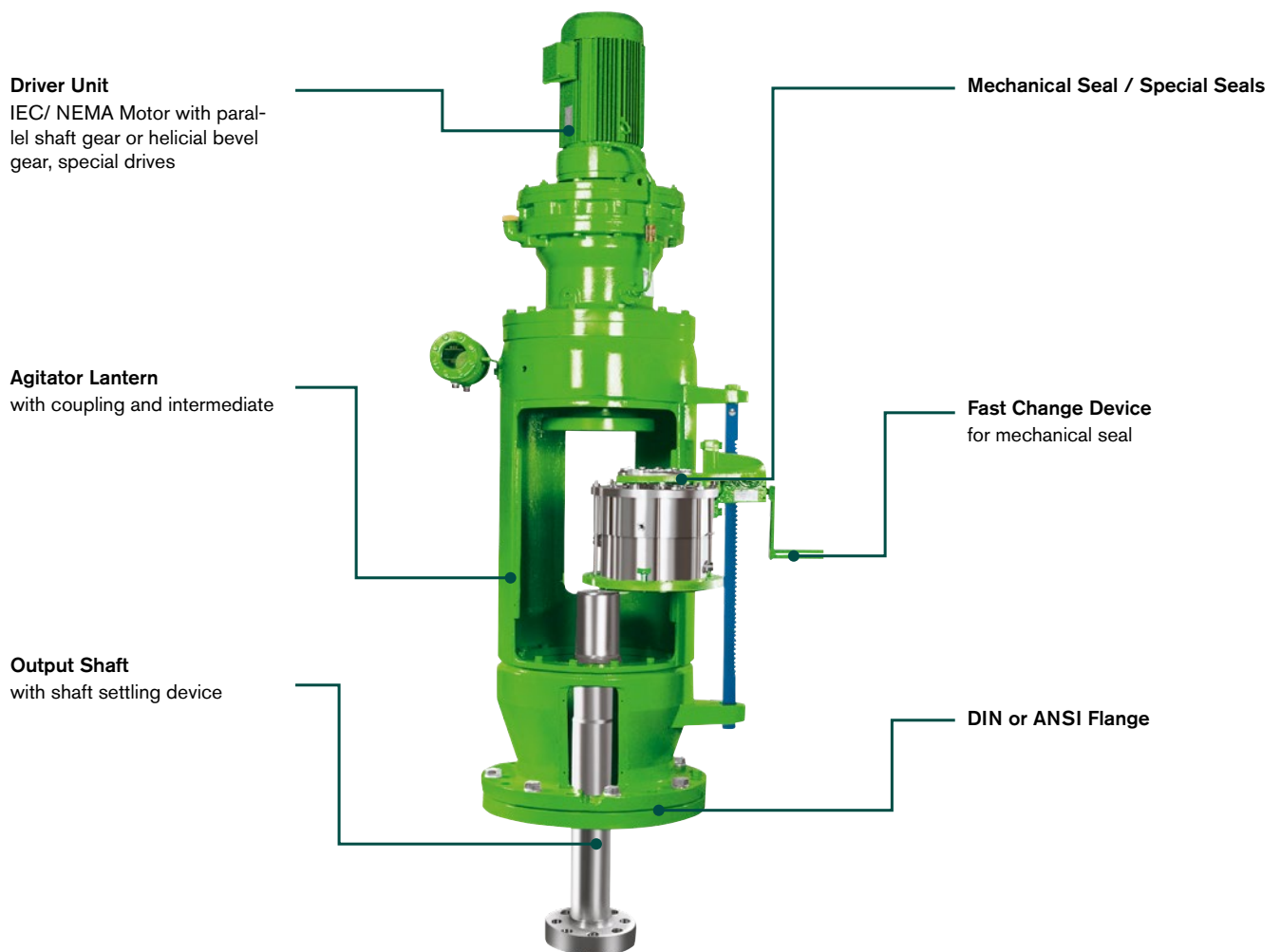
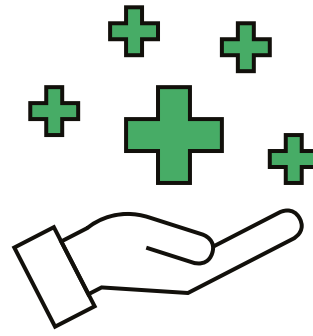
SPECIFICATIONS AND TECHNICAL DATA

Models	Vortex 2000.60 /...60_80_100_125_140_160_180_200_220_240_250
Motor Power	Motor Power 5,5 - 750 kW
Shaft Diameter	60 - 300 mm
Key Applications	Chemical Process - Adhesives & Sealants, Inorganic Chemicals, Plastic Resins, Synthetic Rubber, Paint Coating, Specialty Chemicals



KEY BENEFITS

- VORTEX agitators are equipped with a standard or if requested, special mechanical seal, intermediate shaft and coupling replacement unit for fast lateral disassembly and assembly.
- Minimized working space for maintenance.
- Fixed or variable speed drive systems as process needs dictate.
- Modular system for standard applications and specials like high torque or high- pressure units.



SPXFLOW®

SPX FLOW, Inc. reserves the right to incorporate our latest design and material changes without notice or obligation. Design features, materials of construction and dimensional data, as described in this bulletin, are provided for your information only and should not be relied upon unless confirmed in writing. Please contact your local sales representative for product availability in your region. The green "➤" is a trademark of SPX FLOW, Inc.

For more information, visit www.spxflow.com.