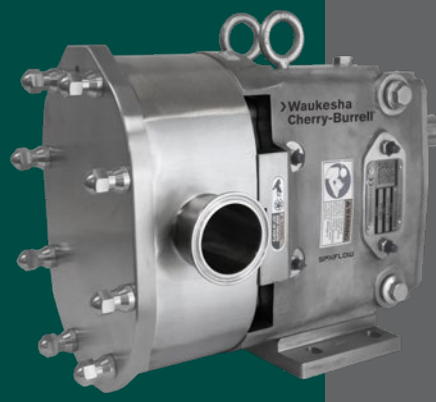


Universal 3

SEAL KIT REFERENCE CHART



Waukesha Cherry-Burrell®



MODELS: 030, 034, 040



Single Mechanical Seal



Double Mechanical Seal

Abbreviation Key:
 SM Single Mechanical
 DM Double Mechanical
 C Carbon
 SC Silicon Carbide
 TC Tungsten Carbide
 NF Narrow Face
 Inner = Product Side, Outer = Flush Side

| SEAL KIT DESCRIPTION | | STANDARD U3 SEAL ITEM NUMBERS | | | | | | | | | | | | | | | | |
|--|-----------------|-------------------------------|----------------|-----------------------|------------------------|----------------------------|------------------------------|------------------------------|----------------------|-----------------|---------------------|---------------------|------------------------------|--------------------------|----------------------|-----------------|-----------------|---------|
| | | SEAL KIT COMPONENTS | | | | | | | | | | | | | | | | |
| | | 151 | 190 | 191 | 192 | 193 | 194 | 195 | 196 | 197 | 198 | 199 | 200 | 201 | 202 | 203 | 204 | |
| SINGLE OR DOUBLE MECHANICAL ROTARY INNER/STATIONARY INNER ELASTOMER SEE ABBREVIATION KEY | KIT PART NUMBER | O-RING, ADJUSTING RING | ADJUSTING RING | O-RING ADJUSTING RING | FLUSH-SIDE ROTARY SEAL | FLUSH-SIDE STATIONARY SEAL | O-RING FLUSH SIDE STATIONARY | WAVE SPRING | SEAL HOUSING BOLT DM | SEAL HOUSING DM | O-RING SEAL HOUSING | O-RING PRODUCT SIDE | PRODCUT SIDE STATIONARY SEAL | PRODUCT SIDE ROTARY SEAL | SEAL HOUSING BOLT SM | SEAL HOUSING SM | FLUSH EXTENSION | |
| | | QTY 2/KIT | QTY 2/KIT | QTY 2/KIT | QTY 2/KIT | QTY 2/KIT | QTY 2/KIT | SM QTY 2/KIT DM QTY 4/KIT | QTY 8/KIT | QTY 2/KIT | QTY 2/KIT | QTY 4/KIT | QTY 2/KIT | QTY 2/KIT | QTY 8/KIT | QTY 2/KIT | NPT | BSP |
| QTY 2/KIT | QTY 2/KIT | QTY 2/KIT | QTY 2/KIT | QTY 2/KIT | QTY 2/KIT | QTY 2/KIT | SM QTY 2/KIT DM QTY 4/KIT | QTY 8/KIT | QTY 2/KIT | QTY 2/KIT | QTY 4/KIT | QTY 2/KIT | QTY 2/KIT | QTY 8/KIT | QTY 2/KIT | QTY 4/KIT | | |
| SEAL KIT, SM, SC/C, FKM | 303993+ | | | | | | | 142484+ | | | | V70147 | 142476+ | 142482+ | 30-741 | 142486+ | | |
| SEAL KIT, SM, SC/C, EPDM | 303994+ | | | | | | | 142484+ | | | | E70147 | 142476+ | 142482+ | 30-741 | 142486+ | | |
| SEAL KIT, SM, SC/SC, FKM | 303996+ | | | | | | | 142484+ | | | | V70147 | 142477+ | 142482+ | 30-741 | 142486+ | | |
| SEAL KIT, SM, SC/SC, EPDM | 303997+ | | | | | | | 142484+ | | | | E70147 | 142477+ | 142482+ | 30-741 | 142486+ | | |
| SEAL KIT, SM, SC/TC, FKM | 303999+ | | | | | | | 142484+ | | | | V70147 | 142477+ | 142482+ | 30-741 | 142486+ | | |
| SEAL KIT, SM, SC/TC, EPDM | 304000+ | | | | | | | 142484+ | | | | E70147 | 142477+ | 142482+ | 30-741 | 142486+ | | |
| SEAL KIT, SM, SC/SC NF, FKM | 304005+ | | | | | | | 142484+ | | | | V70147 | 142477+ | 142482+ | 30-741 | 142486+ | | |
| SEAL KIT, SM, SC/SC NF, EPDM | 304006+ | | | | | | | 142484+ | | | | E70147 | 142477+ | 142482+ | 30-741 | 142486+ | | |
| SEAL KIT, SM, SC/TC NF, FKM | 304008+ | | | | | | | 142484+ | | | | V70147 | 142477+ | 142482+ | 30-741 | 142486+ | | |
| SEAL KIT, SM, SC/TC NF, EPDM | 304009+ | | | | | | | 142484+ | | | | E70147 | 142477+ | 142482+ | 30-741 | 142486+ | | |
| SEAL KIT, SM, TC/C, FKM | 304011+ | | | | | | | 142484+ | | | | V70147 | 142476+ | 142483+ | 30-741 | 142486+ | | |
| SEAL KIT, SM, TC/C, EPDM | 304012+ | | | | | | | 142484+ | | | | E70147 | 142476+ | 142483+ | 30-741 | 142486+ | | |
| SEAL KIT, SM, TC/SC, FKM | 304014+ | | | | | | | 142484+ | | | | V70147 | 142477+ | 142483+ | 30-741 | 142486+ | | |
| SEAL KIT, SM, TC/SC, EPDM | 304015+ | | | | | | | 142484+ | | | | E70147 | 142477+ | 142483+ | 30-741 | 142486+ | | |
| SEAL KIT, SM, TC/TC, FKM | 304017+ | | | | | | | 142484+ | | | | V70147 | 142478+ | 142483+ | 30-741 | 142486+ | | |
| SEAL KIT, SM, TC/TC, EPDM | 304018+ | | | | | | | 142484+ | | | | E70147 | 142478+ | 142483+ | 30-741 | 142486+ | | |
| SEAL KIT, SM, TC/SC NF, FKM | 304023+ | | | | | | | 142484+ | | | | V70147 | 142480+ | 142483+ | 30-741 | 142486+ | | |
| SEAL KIT, SM, TC/SC NF, EPDM | 304024+ | | | | | | | 142484+ | | | | E70147 | 142480+ | 142483+ | 30-741 | 142486+ | | |
| SEAL KIT, SM, TC/TC NF, FKM | 304026+ | | | | | | | 142484+ | | | | V70147 | 142481+ | 142483+ | 30-741 | 142486+ | | |
| SEAL KIT, SM, TC/TC NF, EPDM | 304027+ | | | | | | | 142484+ | | | | E70147 | 142481+ | 142483+ | 30-741 | 142486+ | | |
| SEAL KIT, DM, SC/C, FKM | 304255+ | V70031 | 142473+ | V70144 | 142474+ | 142475+ | V70147 | 142484+ | 30-745 | 142485+ | V70041 | V70147 | 142476+ | 142482+ | | | 141189+ | 141191+ |
| SEAL KIT, DM, SC/C, EPDM | 304256+ | E70031 | 142473+ | E70144 | 142474+ | 142475+ | E70147 | 142484+ | 30-745 | 142485+ | E70041 | E70147 | 142476+ | 142482+ | | | 141189+ | 141191+ |
| SEAL KIT, DM, SC/SC, FKM | 304259+ | V70031 | 142473+ | V70144 | 142474+ | 142475+ | V70147 | 142484+ | 30-745 | 142485+ | V70041 | V70147 | 142477+ | 142482+ | | | 141189+ | 141191+ |
| SEAL KIT, DM, SC/SC, EPDM | 304260+ | E70031 | 142473+ | E70144 | 142474+ | 142475+ | E70147 | 142484+ | 30-745 | 142485+ | E70041 | E70147 | 142477+ | 142482+ | | | 141189+ | 141191+ |
| SEAL KIT, DM, SC/TC, FKM | 304263+ | V70031 | 142473+ | V70144 | 142474+ | 142475+ | V70147 | 142484+ | 30-745 | 142485+ | V70041 | V70147 | 142477+ | 142482+ | | | 141189+ | 141191+ |
| SEAL KIT, DM, SC/TC, EPDM | 304264+ | E70031 | 142473+ | E70144 | 142474+ | 142475+ | E70147 | 142484+ | 30-745 | 142485+ | E70041 | E70147 | 142477+ | 142482+ | | | 141189+ | 141191+ |
| SEAL KIT, DM, SC/SC NF, FKM | 304271+ | V70031 | 142473+ | V70144 | 142474+ | 142475+ | V70147 | 142484+ | 30-745 | 142485+ | V70041 | V70147 | 142477+ | 142482+ | | | 141189+ | 141191+ |
| SEAL KIT, DM, SC/ SC NF, EPDM | 304272+ | E70031 | 142473+ | E70144 | 142474+ | 142475+ | E70147 | 142484+ | 30-745 | 142485+ | E70041 | E70147 | 142477+ | 142482+ | | | 141189+ | 141191+ |
| SEAL KIT, DM, SC/TC NF, FKM | 304275+ | V70031 | 142473+ | V70144 | 142474+ | 142475+ | V70147 | 142484+ | 30-745 | 142485+ | V70041 | V70147 | 142477+ | 142482+ | | | 141189+ | 141191+ |
| SEAL KIT, DM, SC/ TC NF, EPDM | 304276+ | E70031 | 142473+ | E70144 | 142474+ | 142475+ | E70147 | 142484+ | 30-745 | 142485+ | E70041 | E70147 | 142477+ | 142482+ | | | 141189+ | 141191+ |
| SEAL KIT, DM, TC/C, FKM | 304279+ | V70031 | 142473+ | V70144 | 142474+ | 142475+ | V70147 | 142484+ | 30-745 | 142485+ | V70041 | V70147 | 142476+ | 142483+ | | | 141189+ | 141191+ |
| SEAL KIT, DM, TC/C, EPDM | 304280+ | E70031 | 142473+ | E70144 | 142474+ | 142475+ | E70147 | 142484+ | 30-745 | 142485+ | E70041 | E70147 | 142476+ | 142483+ | | | 141189+ | 141191+ |
| SEAL KIT, DM, TC/SC, FKM | 304283+ | V70031 | 142473+ | V70144 | 142474+ | 142475+ | V70147 | 142484+ | 30-745 | 142485+ | V70041 | V70147 | 142477+ | 142483+ | | | 141189+ | 141191+ |
| SEAL KIT, DM, TC/SC, EPDM | 304284+ | E70031 | 142473+ | E70144 | 142474+ | 142475+ | E70147 | 142484+ | 30-745 | 142485+ | E70041 | E70147 | 142477+ | 142483+ | | | 141189+ | 141191+ |
| SEAL KIT, DM, TC/TC, FKM | 304287+ | V70031 | 142473+ | V70144 | 142474+ | 142475+ | V70147 | 142484+ | 30-745 | 142485+ | V70041 | V70147 | 142478+ | 142483+ | | | 141189+ | 141191+ |
| SEAL KIT, DM, TC/TC, EPDM | 304288+ | E70031 | 142473+ | E70144 | 142474+ | 142475+ | E70147 | 142484+ | 30-745 | 142485+ | E70041 | E70147 | 142478+ | 142483+ | | | 141189+ | 141191+ |
| SEAL KIT, DM, TC/SC NF, FKM | 304295+ | V70031 | 142473+ | V70144 | 142474+ | 142475+ | V70147 | 142484+ | 30-745 | 142485+ | V70041 | V70147 | 142480+ | 142483+ | | | 141189+ | 141191+ |
| SEAL KIT, DM, TC/SC NF, EPDM | 304296+ | E70031 | 142473+ | E70144 | 142474+ | 142475+ | E70147 | 142484+ | 30-745 | 142485+ | E70041 | E70147 | 142480+ | 142483+ | | | 141189+ | 141191+ |
| SEAL KIT, DM, TC/TC NF, FKM | 304299+ | V70031 | 142473+ | V70144 | 142474+ | 142475+ | V70147 | 142484+ | 30-745 | 142485+ | V70041 | V70147 | 142481+ | 142483+ | | | 141189+ | 141191+ |
| SEAL KIT, DM, TC/TC NF, EPDM | 304300+ | E70031 | 142473+ | E70144 | 142474+ | 142475+ | E70147 | 142484+ | 30-745 | 142485+ | E70041 | E70147 | 142481+ | 142483+ | | | 141189+ | 141191+ |

Additional seal kit options available, contact customer service.

SPX FLOW, Inc. reserves the right to incorporate our latest design and material changes without notice or obligation. Design features, materials of construction and dimensional data, as described in this bulletin, are provided for your information only and should not be relied upon unless confirmed in writing. Please contact your local sales representative for product availability in your region. For more information, visit www.spxflow.com.

The green " » " is a trademark of SPX FLOW, Inc.

Universal 3

SEAL KIT REFERENCE CHART



Waukesha Cherry-Burrell®



MODELS: 045, 060, 130



Single Mechanical Seal



Double Mechanical Seal

Abbreviation Key:
 SM Single Mechanical
 DM Double Mechanical
 C Carbon
 SC Silicon Carbide
 TC Tungsten Carbide
 NF Narrow Face
 Inner = Product Side, Outer = Flush Side

| SEAL KIT DESCRIPTION | | STANDARD U3 SEAL ITEM NUMBERS | | | | | | | | | | | | | | | | | |
|-------------------------------|-----------------------|-------------------------------|-----------------------|------------------------|----------------------------|------------------------------|------------------------------|--------------------------------------|--------------------------------------|---------------------|---------------------|------------------------------|--------------------------|--------------------------------------|--------------------------------------|-----------------|---------|---------|--|
| | | SEAL KIT COMPONENTS | | | | | | | | | | | | | | | | | |
| | | 151 | 190 | 191 | 192 | 193 | 194 | 195 | 196 | 197 | 198 | 199 | 200 | 201 | 202 | 203 | 204 | | |
| KIT PART NUMBER | O-RING ADJUSTING RING | ADJUSTING RING | O-RING ADJUSTING RING | FLUSH-SIDE ROTARY SEAL | FLUSH-SIDE STATIONARY SEAL | O-RING FLUSH SIDE STATIONARY | WAVE SPRING | SEAL HOUSING BOLT DM | SEAL HOUSING DM | O-RING SEAL HOUSING | O-RING PRODUCT SIDE | PRODCUT SIDE STATIONARY SEAL | PRODUCT SIDE ROTARY SEAL | SEAL HOUSING BOLT SM | SEAL HOUSING SM | FLUSH EXTENSION | | | |
| | QTY 2/KIT | QTY 2/KIT | QTY 2/KIT | QTY 2/KIT | QTY 2/KIT | QTY 2/KIT | SM QTY 2/KIT DM QTY 4/KIT | (NOT INCL. IN SEAL KIT) QTY 8/KIT | (NOT INCL. IN SEAL KIT) QTY 2/KIT | QTY 2/KIT | QTY 4/KIT | QTY 2/KIT | QTY 2/KIT | (NOT INCL. IN SEAL KIT) QTY 8/KIT | (NOT INCL. IN SEAL KIT) QTY 2/KIT | NPT | BSP | | |
| SEAL KIT, SM, SC/C, FKM | 304029+ | | | | | | | 142484+ | | | | | V70147 | 142476+ | 142482+ | 30-741 | 142488+ | | |
| SEAL KIT, SM, SC/C, EPDM | 304030+ | | | | | | | 142484+ | | | | | E70147 | 142476+ | 142482+ | 30-741 | 142488+ | | |
| SEAL KIT, SM, SC/SC, FKM | 304032+ | | | | | | | 142484+ | | | | | V70147 | 142477+ | 142482+ | 30-741 | 142488+ | | |
| SEAL KIT, SM, SC/SC, EPDM | 304033+ | | | | | | | 142484+ | | | | | E70147 | 142477+ | 142482+ | 30-741 | 142488+ | | |
| SEAL KIT, SM, SC/TC, FKM | 304035+ | | | | | | | 142484+ | | | | | V70147 | 142477+ | 142482+ | 30-741 | 142488+ | | |
| SEAL KIT, SM, SC/TC, EPDM | 304036+ | | | | | | | 142484+ | | | | | E70147 | 142477+ | 142482+ | 30-741 | 142488+ | | |
| SEAL KIT, SM, SC/SC NF, FKM | 304041+ | | | | | | | 142484+ | | | | | V70147 | 142477+ | 142482+ | 30-741 | 142488+ | | |
| SEAL KIT, SM, SC/SC NF, EPDM | 304042+ | | | | | | | 142484+ | | | | | E70147 | 142477+ | 142482+ | 30-741 | 142488+ | | |
| SEAL KIT, SM, SC/TC NF, FKM | 304044+ | | | | | | | 142484+ | | | | | V70147 | 142477+ | 142482+ | 30-741 | 142488+ | | |
| SEAL KIT, SM, SC/TC NF, EPDM | 304045+ | | | | | | | 142484+ | | | | | E70147 | 142477+ | 142482+ | 30-741 | 142488+ | | |
| SEAL KIT, SM, TC/C, FKM | 304047+ | | | | | | | 142484+ | | | | | V70147 | 142476+ | 142483+ | 30-741 | 142488+ | | |
| SEAL KIT, SM, TC/C, EPDM | 304048+ | | | | | | | 142484+ | | | | | E70147 | 142476+ | 142483+ | 30-741 | 142488+ | | |
| SEAL KIT, SM, TC/SC, FKM | 304050+ | | | | | | | 142484+ | | | | | V70147 | 142477+ | 142483+ | 30-741 | 142488+ | | |
| SEAL KIT, SM, TC/SC, EPDM | 304051+ | | | | | | | 142484+ | | | | | E70147 | 142477+ | 142483+ | 30-741 | 142488+ | | |
| SEAL KIT, SM, TC/TC, FKM | 304053+ | | | | | | | 142484+ | | | | | V70147 | 142478+ | 142483+ | 30-741 | 142488+ | | |
| SEAL KIT, SM, TC/TC, EPDM | 304054+ | | | | | | | 142484+ | | | | | E70147 | 142478+ | 142483+ | 30-741 | 142488+ | | |
| SEAL KIT, SM, TC/SC NF, FKM | 304059+ | | | | | | | 142484+ | | | | | V70147 | 142480+ | 142483+ | 30-741 | 142488+ | | |
| SEAL KIT, SM, TC/SC NF, EPDM | 304060+ | | | | | | | 142484+ | | | | | E70147 | 142480+ | 142483+ | 30-741 | 142488+ | | |
| SEAL KIT, SM, TC/TC NF, FKM | 304062+ | | | | | | | 142484+ | | | | | V70147 | 142481+ | 142483+ | 30-741 | 142488+ | | |
| SEAL KIT, SM, TC/TC NF, EPDM | 304063+ | | | | | | | 142484+ | | | | | E70147 | 142481+ | 142483+ | 30-741 | 142488+ | | |
| SEAL KIT, DM, SC/C, FKM | 304303+ | V70031 | 142473+ | V70144 | 142474+ | 142475+ | V70147 | 142484+ | 30-725 | 142487+ | V70041 | V70147 | 142476+ | 142482+ | | | 141190+ | 141192+ | |
| SEAL KIT, DM, SC/C, EPDM | 304304+ | E70031 | 142473+ | E70144 | 142474+ | 142475+ | E70147 | 142484+ | 30-725 | 142487+ | E70041 | E70147 | 142476+ | 142482+ | | | 141190+ | 141192+ | |
| SEAL KIT, DM, SC/SC, FKM | 304307+ | V70031 | 142473+ | V70144 | 142474+ | 142475+ | V70147 | 142484+ | 30-725 | 142487+ | V70041 | V70147 | 142477+ | 142482+ | | | 141190+ | 141192+ | |
| SEAL KIT, DM, SC/SC, EPDM | 304308+ | E70031 | 142473+ | E70144 | 142474+ | 142475+ | E70147 | 142484+ | 30-725 | 142487+ | E70041 | E70147 | 142477+ | 142482+ | | | 141190+ | 141192+ | |
| SEAL KIT, DM, SC/TC, FKM | 304311+ | V70031 | 142473+ | V70144 | 142474+ | 142475+ | V70147 | 142484+ | 30-725 | 142487+ | V70041 | V70147 | 142477+ | 142482+ | | | 141190+ | 141192+ | |
| SEAL KIT, DM, SC/TC, EPDM | 304312+ | E70031 | 142473+ | E70144 | 142474+ | 142475+ | E70147 | 142484+ | 30-725 | 142487+ | E70041 | E70147 | 142477+ | 142482+ | | | 141190+ | 141192+ | |
| SEAL KIT, DM, SC/SC NF, FKM | 304319+ | V70031 | 142473+ | V70144 | 142474+ | 142475+ | V70147 | 142484+ | 30-725 | 142487+ | V70041 | V70147 | 142477+ | 142482+ | | | 141190+ | 141192+ | |
| SEAL KIT, DM, SC/ SC NF, EPDM | 304320+ | E70031 | 142473+ | E70144 | 142474+ | 142475+ | E70147 | 142484+ | 30-725 | 142487+ | E70041 | E70147 | 142477+ | 142482+ | | | 141190+ | 141192+ | |
| SEAL KIT, DM, SC/TC NF, FKM | 304323+ | V70031 | 142473+ | V70144 | 142474+ | 142475+ | V70147 | 142484+ | 30-725 | 142487+ | V70041 | V70147 | 142477+ | 142482+ | | | 141190+ | 141192+ | |
| SEAL KIT, DM, SC/ TC NF, EPDM | 304324+ | E70031 | 142473+ | E70144 | 142474+ | 142475+ | E70147 | 142484+ | 30-725 | 142487+ | E70041 | E70147 | 142477+ | 142482+ | | | 141190+ | 141192+ | |
| SEAL KIT, DM, TC/C, FKM | 304327+ | V70031 | 142473+ | V70144 | 142474+ | 142475+ | V70147 | 142484+ | 30-725 | 142487+ | V70041 | V70147 | 142476+ | 142483+ | | | 141190+ | 141192+ | |
| SEAL KIT, DM, TC/C, EPDM | 304328+ | E70031 | 142473+ | E70144 | 142474+ | 142475+ | E70147 | 142484+ | 30-725 | 142487+ | E70041 | E70147 | 142476+ | 142483+ | | | 141190+ | 141192+ | |
| SEAL KIT, DM, TC/SC, FKM | 304331+ | V70031 | 142473+ | V70144 | 142474+ | 142475+ | V70147 | 142484+ | 30-725 | 142487+ | V70041 | V70147 | 142477+ | 142483+ | | | 141190+ | 141192+ | |
| SEAL KIT, DM, TC/SC, EPDM | 304332+ | E70031 | 142473+ | E70144 | 142474+ | 142475+ | E70147 | 142484+ | 30-725 | 142487+ | E70041 | E70147 | 142477+ | 142483+ | | | 141190+ | 141192+ | |
| SEAL KIT, DM, TC/TC, FKM | 304335+ | V70031 | 142473+ | V70144 | 142474+ | 142475+ | V70147 | 142484+ | 30-725 | 142487+ | V70041 | V70147 | 142478+ | 142483+ | | | 141190+ | 141192+ | |
| SEAL KIT, DM, TC/TC, EPDM | 304336+ | E70031 | 142473+ | E70144 | 142474+ | 142475+ | E70147 | 142484+ | 30-725 | 142487+ | E70041 | E70147 | 142478+ | 142483+ | | | 141190+ | 141192+ | |
| SEAL KIT, DM, TC/SC NF, FKM | 304343+ | V70031 | 142473+ | V70144 | 142474+ | 142475+ | V70147 | 142484+ | 30-725 | 142487+ | V70041 | V70147 | 142480+ | 142483+ | | | 141190+ | 141192+ | |
| SEAL KIT, DM, TC/SC NF, EPDM | 304344+ | E70031 | 142473+ | E70144 | 142474+ | 142475+ | E70147 | 142484+ | 30-725 | 142487+ | E70041 | E70147 | 142480+ | 142483+ | | | 141190+ | 141192+ | |
| SEAL KIT, DM, TC/TC NF, FKM | 304347+ | V70031 | 142473+ | V70144 | 142474+ | 142475+ | V70147 | 142484+ | 30-725 | 142487+ | V70041 | V70147 | 142481+ | 142483+ | | | 141190+ | 141192+ | |
| SEAL KIT, DM, TC/TC NF, EPDM | 304348+ | E70031 | 142473+ | E70144 | 142474+ | 142475+ | E70147 | 142484+ | 30-725 | 142487+ | E70041 | E70147 | 142481+ | 142483+ | | | 141190+ | 141192+ | |

Additional seal kit options available, contact customer service.

SPX FLOW, Inc. reserves the right to incorporate our latest design and material changes without notice or obligation. Design features, materials of construction and dimensional data, as described in this bulletin, are provided for your information only and should not be relied upon unless confirmed in writing. Please contact your local sales representative for product availability in your region. For more information, visit www.spxfllow.com.

The green " » " is a trademark of SPX FLOW, Inc.

Universal 3

SEAL KIT REFERENCE CHART



Waukesha Cherry-Burrell®



MODELS: 180, 220



Single Mechanical Seal



Double Mechanical Seal

Abbreviation Key:
 SM Single Mechanical
 DM Double Mechanical
 C Carbon
 SC Silicon Carbide
 TC Tungsten Carbide
 NF Narrow Face
 Inner = Product Side, Outer = Flush Side

| SEAL KIT DESCRIPTION | | KIT PART NUMBER | | STANDARD U3 SEAL ITEM NUMBERS | | | | | | | | | | | | | | | |
|--|---------|------------------------|----------------|-------------------------------|------------------------|----------------------------|------------------------------|------------------------------|--------------------------------------|--------------------------------------|---------------------|---------------------|------------------------------|--------------------------|--------------------------------------|--------------------------------------|-----------------|---------|-----|
| | | | | 151 | 190 | 191 | 192 | 193 | 194 | 195 | 196 | 197 | 198 | 199 | 200 | 201 | 202 | 203 | 204 |
| | | | | SEAL KIT COMPONENTS | | | | | | | | | | | | | | | |
| SINGLE OR DOUBLE MECHANICAL ROTARY INNER/STATIONARY INNER ELASTOMER SEE ABBREVIATION KEY | | O-RING, ADJUSTING RING | ADJUSTING RING | O-RING ADJUSTING RING | FLUSH-SIDE ROTARY SEAL | FLUSH-SIDE STATIONARY SEAL | O-RING FLUSH SIDE STATIONARY | WAVE SPRING | SEAL HOUSING BOLT DM | SEAL HOUSING DM | O-RING SEAL HOUSING | O-RING PRODUCT SIDE | PRODCUT SIDE STATIONARY SEAL | PRODUCT SIDE ROTARY SEAL | SEAL HOUSING BOLT SM | SEAL HOUSING SM | FLUSH EXTENSION | | |
| | | QTY 2/KIT | QTY 2/KIT | QTY 2/KIT | QTY 2/KIT | QTY 2/KIT | QTY 2/KIT | SM QTY 2/KIT DM QTY 4/KIT | QTY 8/KIT (NOT INCL. IN SEAL KIT) | QTY 2/KIT (NOT INCL. IN SEAL KIT) | QTY 2/KIT | QTY 4/KIT | QTY 2/KIT | QTY 2/KIT | QTY 8/KIT (NOT INCL. IN SEAL KIT) | QTY 2/KIT (NOT INCL. IN SEAL KIT) | NPT | BSP | |
| SEAL KIT, SM, SC/C, FKM | 304065+ | | | | | | | 142500+ | | | | V70147 | 142492+ | 142498+ | 30-296 | 142502+ | | | |
| SEAL KIT, SM, SC/C, EPDM | 304066+ | | | | | | | 142500+ | | | | E70147 | 142492+ | 142498+ | 30-296 | 142502+ | | | |
| SEAL KIT, SM, SC/SC, FKM | 304068+ | | | | | | | 142500+ | | | | V70147 | 142493+ | 142498+ | 30-296 | 142502+ | | | |
| SEAL KIT, SM, SC/SC, EPDM | 304069+ | | | | | | | 142500+ | | | | E70147 | 142493+ | 142498+ | 30-296 | 142502+ | | | |
| SEAL KIT, SM, SC/TC, FKM | 304071+ | | | | | | | 142500+ | | | | V70147 | 142494+ | 142498+ | 30-296 | 142502+ | | | |
| SEAL KIT, SM, SC/TC, EPDM | 304072+ | | | | | | | 142500+ | | | | E70147 | 142494+ | 142498+ | 30-296 | 142502+ | | | |
| SEAL KIT, SM, SC/SC NF, FKM | 304077+ | | | | | | | 142500+ | | | | V70147 | 142496+ | 142498+ | 30-296 | 142502+ | | | |
| SEAL KIT, SM, SC/SC NF, EPDM | 304078+ | | | | | | | 142500+ | | | | E70147 | 142496+ | 142498+ | 30-296 | 142502+ | | | |
| SEAL KIT, SM, SC/TC NF, FKM | 304080+ | | | | | | | 142500+ | | | | V70147 | 142497+ | 142498+ | 30-296 | 142502+ | | | |
| SEAL KIT, SM, SC/TC NF, EPDM | 304081+ | | | | | | | 142500+ | | | | E70147 | 142497+ | 142498+ | 30-296 | 142502+ | | | |
| SEAL KIT, SM, TC/C, FKM | 304083+ | | | | | | | 142500+ | | | | V70147 | 142492+ | 142499+ | 30-296 | 142502+ | | | |
| SEAL KIT, SM, TC/C, EPDM | 304084+ | | | | | | | 142500+ | | | | E70147 | 142492+ | 142499+ | 30-296 | 142502+ | | | |
| SEAL KIT, SM, TC/SC, FKM | 304086+ | | | | | | | 142500+ | | | | V70147 | 142493+ | 142499+ | 30-296 | 142502+ | | | |
| SEAL KIT, SM, TC/SC, EPDM | 304087+ | | | | | | | 142500+ | | | | E70147 | 142493+ | 142499+ | 30-296 | 142502+ | | | |
| SEAL KIT, SM, TC/TC, FKM | 304089+ | | | | | | | 142500+ | | | | V70147 | 142494+ | 142499+ | 30-296 | 142502+ | | | |
| SEAL KIT, SM, TC/TC, EPDM | 304090+ | | | | | | | 142500+ | | | | E70147 | 142494+ | 142499+ | 30-296 | 142502+ | | | |
| SEAL KIT, SM, TC/SC NF, FKM | 304095+ | | | | | | | 142500+ | | | | V70147 | 142496+ | 142499+ | 30-296 | 142502+ | | | |
| SEAL KIT, SM, TC/SC NF, EPDM | 304096+ | | | | | | | 142500+ | | | | E70147 | 142496+ | 142499+ | 30-296 | 142502+ | | | |
| SEAL KIT, SM, TC/TC NF, FKM | 304098+ | | | | | | | 142500+ | | | | V70147 | 142497+ | 142499+ | 30-296 | 142502+ | | | |
| SEAL KIT, SM, TC/TC NF, EPDM | 304099+ | | | | | | | 142500+ | | | | E70147 | 142497+ | 142499+ | 30-296 | 142502+ | | | |
| SEAL KIT, DM, SC/C, FKM | 304351+ | V70149 | 142489+ | V70243 | 142490+ | 142491+ | V70158 | 142500+ | 30-743 | 142501+ | V70247 | V70248 | 142492+ | 142498+ | | | 141190+ | 141192+ | |
| SEAL KIT, DM, SC/C, EPDM | 304352+ | E70149 | 142489+ | E70243 | 142490+ | 142491+ | E70158 | 142500+ | 30-743 | 142501+ | E70247 | E70248 | 142492+ | 142498+ | | | 141190+ | 141192+ | |
| SEAL KIT, DM, SC/SC, FKM | 304355+ | V70149 | 142489+ | V70243 | 142490+ | 142491+ | V70158 | 142500+ | 30-743 | 142501+ | V70247 | V70248 | 142493+ | 142498+ | | | 141190+ | 141192+ | |
| SEAL KIT, DM, SC/SC, EPDM | 304356+ | E70149 | 142489+ | E70243 | 142490+ | 142491+ | E70158 | 142500+ | 30-743 | 142501+ | E70247 | E70248 | 142493+ | 142498+ | | | 141190+ | 141192+ | |
| SEAL KIT, DM, SC/TC, FKM | 304359+ | V70149 | 142489+ | V70243 | 142490+ | 142491+ | V70158 | 142500+ | 30-743 | 142501+ | V70247 | V70248 | 142494+ | 142498+ | | | 141190+ | 141192+ | |
| SEAL KIT, DM, SC/TC, EPDM | 304360+ | E70149 | 142489+ | E70243 | 142490+ | 142491+ | E70158 | 142500+ | 30-743 | 142501+ | E70247 | E70248 | 142494+ | 142498+ | | | 141190+ | 141192+ | |
| SEAL KIT, DM, SC/SC NF, FKM | 304367+ | V70149 | 142489+ | V70243 | 142490+ | 142491+ | V70158 | 142500+ | 30-743 | 142501+ | V70247 | V70248 | 142496+ | 142498+ | | | 141190+ | 141192+ | |
| SEAL KIT, DM, SC/SC NF, EPDM | 304368+ | E70149 | 142489+ | E70243 | 142490+ | 142491+ | E70158 | 142500+ | 30-743 | 142501+ | E70247 | E70248 | 142496+ | 142498+ | | | 141190+ | 141192+ | |
| SEAL KIT, DM, SC/TC NF, FKM | 304371+ | V70149 | 142489+ | V70243 | 142490+ | 142491+ | V70158 | 142500+ | 30-743 | 142501+ | V70247 | V70248 | 142497+ | 142498+ | | | 141190+ | 141192+ | |
| SEAL KIT, DM, SC/TC NF, EPDM | 304372+ | E70149 | 142489+ | E70243 | 142490+ | 142491+ | E70158 | 142500+ | 30-743 | 142501+ | E70247 | E70248 | 142497+ | 142498+ | | | 141190+ | 141192+ | |
| SEAL KIT, DM, TC/C, FKM | 304375+ | V70149 | 142489+ | V70243 | 142490+ | 142491+ | V70158 | 142500+ | 30-743 | 142501+ | V70247 | V70248 | 142492+ | 142499+ | | | 141190+ | 141192+ | |
| SEAL KIT, DM, TC/C, EPDM | 304376+ | E70149 | 142489+ | E70243 | 142490+ | 142491+ | E70158 | 142500+ | 30-743 | 142487+ | E70247 | E70248 | 142492+ | 142499+ | | | 141190+ | 141192+ | |
| SEAL KIT, DM, TC/SC, FKM | 304379+ | V70149 | 142489+ | V70243 | 142490+ | 142491+ | V70158 | 142500+ | 30-743 | 142487+ | V70247 | V70248 | 142493+ | 142499+ | | | 141190+ | 141192+ | |
| SEAL KIT, DM, TC/SC, EPDM | 304380+ | E70149 | 142489+ | E70243 | 142490+ | 142491+ | E70158 | 142500+ | 30-743 | 142487+ | E70247 | E70248 | 142493+ | 142499+ | | | 141190+ | 141192+ | |
| SEAL KIT, DM, TC/TC, FKM | 304383+ | V70149 | 142489+ | V70243 | 142490+ | 142491+ | V70158 | 142500+ | 30-743 | 142487+ | V70247 | V70248 | 142494+ | 142499+ | | | 141190+ | 141192+ | |
| SEAL KIT, DM, TC/TC, EPDM | 304384+ | E70149 | 142489+ | E70243 | 142490+ | 142491+ | E70158 | 142500+ | 30-743 | 142487+ | E70247 | E70248 | 142494+ | 142499+ | | | 141190+ | 141192+ | |
| SEAL KIT, DM, TC/SC NF, FKM | 304391+ | V70149 | 142489+ | V70243 | 142490+ | 142491+ | V70158 | 142500+ | 30-743 | 142487+ | V70247 | V70248 | 142496+ | 142499+ | | | 141190+ | 141192+ | |
| SEAL KIT, DM, TC/SC NF, EPDM | 304392+ | E70149 | 142489+ | E70243 | 142490+ | 142491+ | E70158 | 142500+ | 30-743 | 142487+ | E70247 | E70248 | 142496+ | 142499+ | | | 141190+ | 141192+ | |
| SEAL KIT, DM, TC/TC NF, FKM | 304395+ | V70149 | 142489+ | V70243 | 142490+ | 142491+ | V70158 | 142500+ | 30-743 | 142487+ | V70247 | V70248 | 142497+ | 142499+ | | | 141190+ | 141192+ | |
| SEAL KIT, DM, TC/TC NF, EPDM | 304396+ | E70149 | 142489+ | E70243 | 142490+ | 142491+ | E70158 | 142500+ | 30-743 | 142487+ | E70247 | E70248 | 142497+ | 142499+ | | | 141190+ | 141192+ | |

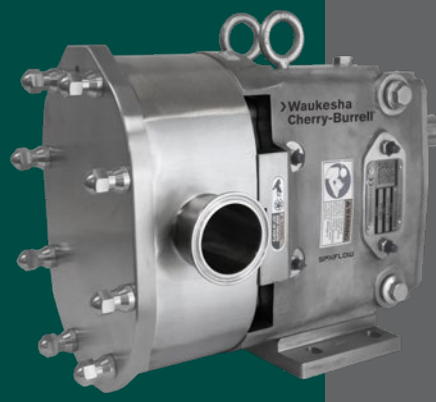
Additional seal kit options available, contact customer service.

SPX FLOW, Inc. reserves the right to incorporate our latest design and material changes without notice or obligation. Design features, materials of construction and dimensional data, as described in this bulletin, are provided for your information only and should not be relied upon unless confirmed in writing. Please contact your local sales representative for product availability in your region. For more information, visit www.spxflow.com.

The green " » " is a trademark of SPX FLOW, Inc.

Universal 3

SEAL KIT REFERENCE CHART



Waukesha Cherry-Burrell®



MODEL: 210



Single Mechanical Seal



Double Mechanical Seal

Abbreviation Key:
 SM Single Mechanical
 DM Double Mechanical
 C Carbon
 SC Silicon Carbide
 TC Tungsten Carbide
 NF Narrow Face
 Inner = Product Side, Outer = Flush Side

| SEAL KIT DESCRIPTION | | KIT PART NUMBER | | STANDARD U3 SEAL ITEM NUMBERS | | | | | | | | | | | | | | | |
|--|---------|------------------------|----------------|-------------------------------|------------------------|----------------------------|------------------------------|--------------|-------------------------|-------------------------|---------------------|---------------------|------------------------------|--------------------------|-------------------------|-------------------------|-----------------|---------|-----|
| | | | | 151 | 190 | 191 | 192 | 193 | 194 | 195 | 196 | 197 | 198 | 199 | 200 | 201 | 202 | 203 | 204 |
| | | | | SEAL KIT COMPONENTS | | | | | | | | | | | | | | | |
| SINGLE OR DOUBLE MECHANICAL ROTARY INNER/STATIONARY INNER ELASTOMER SEE ABBREVIATION KEY | | O-RING, ADJUSTING RING | ADJUSTING RING | O-RING ADJUSTING RING | FLUSH-SIDE ROTARY SEAL | FLUSH-SIDE STATIONARY SEAL | O-RING FLUSH SIDE STATIONARY | WAVE SPRING | SEAL HOUSING BOLT DM | SEAL HOUSING DM | O-RING SEAL HOUSING | O-RING PRODUCT SIDE | PRODCUT SIDE STATIONARY SEAL | PRODUCT SIDE ROTARY SEAL | SEAL HOUSING BOLT SM | SEAL HOUSING SM | FLUSH EXTENSION | | |
| | | | | | | | | | (NOT INCL. IN SEAL KIT) | (NOT INCL. IN SEAL KIT) | | | | | (NOT INCL. IN SEAL KIT) | (NOT INCL. IN SEAL KIT) | NPT | BSP | |
| KIT INCLUDES ROTOR NUT O-RINGS AND COVER GASKETS (NOT LISTED) | | QTY 2/KIT | QTY 2/KIT | QTY 2/KIT | QTY 2/KIT | QTY 2/KIT | QTY 2/KIT | SM QTY 2/KIT | QTY 8/KIT | QTY 2/KIT | QTY 2/KIT | QTY 4/KIT | QTY 2/KIT | QTY 2/KIT | QTY 8/KIT | QTY 2/KIT | QTY 4/KIT | | |
| | | DM QTY 4/KIT | | | | | | | | | | | | | | | | | |
| SEAL KIT, SM, SC/C, FKM | 304101+ | | | | | | | 142500+ | | | | V70147 | 142492+ | 142498+ | 30-775 | 142504+ | | | |
| SEAL KIT, SM, SC/C, EPDM | 304102+ | | | | | | | 142500+ | | | | E70147 | 142492+ | 142498+ | 30-775 | 142504+ | | | |
| SEAL KIT, SM, SC/SC, FKM | 304104+ | | | | | | | 142500+ | | | | V70147 | 142493+ | 142498+ | 30-775 | 142504+ | | | |
| SEAL KIT, SM, SC/SC, EPDM | 304105+ | | | | | | | 142500+ | | | | E70147 | 142493+ | 142498+ | 30-775 | 142504+ | | | |
| SEAL KIT, SM, SC/TC, FKM | 304107+ | | | | | | | 142500+ | | | | V70147 | 142494+ | 142498+ | 30-775 | 142504+ | | | |
| SEAL KIT, SM, SC/TC, EPDM | 304108+ | | | | | | | 142500+ | | | | E70147 | 142494+ | 142498+ | 30-775 | 142504+ | | | |
| SEAL KIT, SM, SC/SC NF, FKM | 304113+ | | | | | | | 142500+ | | | | V70147 | 142496+ | 142498+ | 30-775 | 142504+ | | | |
| SEAL KIT, SM, SC/SC NF, EPDM | 304114+ | | | | | | | 142500+ | | | | E70147 | 142496+ | 142498+ | 30-775 | 142504+ | | | |
| SEAL KIT, SM, SC/TC NF, FKM | 304116+ | | | | | | | 142500+ | | | | V70147 | 142497+ | 142498+ | 30-775 | 142504+ | | | |
| SEAL KIT, SM, SC/TC NF, EPDM | 304117+ | | | | | | | 142500+ | | | | E70147 | 142497+ | 142498+ | 30-775 | 142504+ | | | |
| SEAL KIT, SM, TC/C, FKM | 304119+ | | | | | | | 142500+ | | | | V70147 | 142492+ | 142499+ | 30-775 | 142504+ | | | |
| SEAL KIT, SM, TC/C, EPDM | 304120+ | | | | | | | 142500+ | | | | E70147 | 142492+ | 142499+ | 30-775 | 142504+ | | | |
| SEAL KIT, SM, TC/SC, FKM | 304122+ | | | | | | | 142500+ | | | | V70147 | 142493+ | 142499+ | 30-775 | 142504+ | | | |
| SEAL KIT, SM, TC/SC, EPDM | 304123+ | | | | | | | 142500+ | | | | E70147 | 142493+ | 142499+ | 30-775 | 142504+ | | | |
| SEAL KIT, SM, TC/TC, FKM | 304125+ | | | | | | | 142500+ | | | | V70147 | 142494+ | 142499+ | 30-775 | 142504+ | | | |
| SEAL KIT, SM, TC/TC, EPDM | 304126+ | | | | | | | 142500+ | | | | E70147 | 142494+ | 142499+ | 30-775 | 142504+ | | | |
| SEAL KIT, SM, TC/SC NF, FKM | 304131+ | | | | | | | 142500+ | | | | V70147 | 142496+ | 142499+ | 30-775 | 142504+ | | | |
| SEAL KIT, SM, TC/SC NF, EPDM | 304132+ | | | | | | | 142500+ | | | | E70147 | 142496+ | 142499+ | 30-775 | 142504+ | | | |
| SEAL KIT, SM, TC/TC NF, FKM | 304134+ | | | | | | | 142500+ | | | | V70147 | 142497+ | 142499+ | 30-775 | 142504+ | | | |
| SEAL KIT, SM, TC/TC NF, EPDM | 304135+ | | | | | | | 142500+ | | | | E70147 | 142497+ | 142499+ | 30-775 | 142504+ | | | |
| SEAL KIT, DM, SC/C, FKM | 304399+ | V70149 | 142489+ | V70243 | 142490+ | 142491+ | V70158 | 142500+ | 30-725 | 142503+ | V70249 | V70247 | 142492+ | 142498+ | | | 141190+ | 141192+ | |
| SEAL KIT, DM, SC/C, EPDM | 304400+ | E70149 | 142489+ | E70243 | 142490+ | 142491+ | E70158 | 142500+ | 30-725 | 142503+ | E70249 | E70247 | 142492+ | 142498+ | | | 141190+ | 141192+ | |
| SEAL KIT, DM, SC/SC, FKM | 304403+ | V70149 | 142489+ | V70243 | 142490+ | 142491+ | V70158 | 142500+ | 30-725 | 142503+ | V70249 | V70247 | 142493+ | 142498+ | | | 141190+ | 141192+ | |
| SEAL KIT, DM, SC/SC, EPDM | 304404+ | E70149 | 142489+ | E70243 | 142490+ | 142491+ | E70158 | 142500+ | 30-725 | 142503+ | E70249 | E70247 | 142493+ | 142498+ | | | 141190+ | 141192+ | |
| SEAL KIT, DM, SC/TC, FKM | 304407+ | V70149 | 142489+ | V70243 | 142490+ | 142491+ | V70158 | 142500+ | 30-725 | 142503+ | V70249 | V70247 | 142494+ | 142498+ | | | 141190+ | 141192+ | |
| SEAL KIT, DM, SC/TC, EPDM | 304408+ | E70149 | 142489+ | E70243 | 142490+ | 142491+ | E70158 | 142500+ | 30-725 | 142503+ | E70249 | E70247 | 142494+ | 142498+ | | | 141190+ | 141192+ | |
| SEAL KIT, DM, SC/SC NF, FKM | 304415+ | V70149 | 142489+ | V70243 | 142490+ | 142491+ | V70158 | 142500+ | 30-725 | 142503+ | V70249 | V70247 | 142496+ | 142498+ | | | 141190+ | 141192+ | |
| SEAL KIT, DM, SC/SC NF, EPDM | 304416+ | E70149 | 142489+ | E70243 | 142490+ | 142491+ | E70158 | 142500+ | 30-725 | 142503+ | E70249 | E70247 | 142496+ | 142498+ | | | 141190+ | 141192+ | |
| SEAL KIT, DM, SC/TC NF, FKM | 304419+ | V70149 | 142489+ | V70243 | 142490+ | 142491+ | V70158 | 142500+ | 30-725 | 142503+ | V70249 | V70247 | 142497+ | 142498+ | | | 141190+ | 141192+ | |
| SEAL KIT, DM, SC/TC NF, EPDM | 304420+ | E70149 | 142489+ | E70243 | 142490+ | 142491+ | E70158 | 142500+ | 30-725 | 142503+ | E70249 | E70247 | 142497+ | 142498+ | | | 141190+ | 141192+ | |
| SEAL KIT, DM, TC/C, FKM | 304423+ | V70149 | 142489+ | V70243 | 142490+ | 142491+ | V70158 | 142500+ | 30-725 | 142503+ | V70249 | V70247 | 142492+ | 142499+ | | | 141190+ | 141192+ | |
| SEAL KIT, DM, TC/C, EPDM | 304424+ | E70149 | 142489+ | E70243 | 142490+ | 142491+ | E70158 | 142500+ | 30-725 | 142503+ | E70249 | E70247 | 142492+ | 142499+ | | | 141190+ | 141192+ | |
| SEAL KIT, DM, TC/SC, FKM | 304427+ | V70149 | 142489+ | V70243 | 142490+ | 142491+ | V70158 | 142500+ | 30-725 | 142503+ | V70249 | V70247 | 142493+ | 142499+ | | | 141190+ | 141192+ | |
| SEAL KIT, DM, TC/SC, EPDM | 304428+ | E70149 | 142489+ | E70243 | 142490+ | 142491+ | E70158 | 142500+ | 30-725 | 142503+ | E70249 | E70247 | 142493+ | 142499+ | | | 141190+ | 141192+ | |
| SEAL KIT, DM, TC/TC, FKM | 304431+ | V70149 | 142489+ | V70243 | 142490+ | 142491+ | V70158 | 142500+ | 30-725 | 142503+ | V70249 | V70247 | 142494+ | 142499+ | | | 141190+ | 141192+ | |
| SEAL KIT, DM, TC/TC, EPDM | 304432+ | E70149 | 142489+ | E70243 | 142490+ | 142491+ | E70158 | 142500+ | 30-725 | 142503+ | E70249 | E70247 | 142494+ | 142499+ | | | 141190+ | 141192+ | |
| SEAL KIT, DM, TC/SC NF, FKM | 304439+ | V70149 | 142489+ | V70243 | 142490+ | 142491+ | V70158 | 142500+ | 30-725 | 142503+ | V70249 | V70247 | 142496+ | 142499+ | | | 141190+ | 141192+ | |
| SEAL KIT, DM, TC/SC NF, EPDM | 304440+ | E70149 | 142489+ | E70243 | 142490+ | 142491+ | E70158 | 142500+ | 30-725 | 142503+ | E70249 | E70247 | 142496+ | 142499+ | | | 141190+ | 141192+ | |
| SEAL KIT, DM, TC/TC NF, FKM | 304443+ | V70149 | 142489+ | V70243 | 142490+ | 142491+ | V70158 | 142500+ | 30-725 | 142503+ | V70249 | V70247 | 142497+ | 142499+ | | | 141190+ | 141192+ | |
| SEAL KIT, DM, TC/TC NF, EPDM | 304444+ | E70149 | 142489+ | E70243 | 142490+ | 142491+ | E70158 | 142500+ | 30-725 | 142503+ | E70249 | E70247 | 142497+ | 142499+ | | | 141190+ | 141192+ | |

Additional seal kit options available, contact customer service.

SPX FLOW, Inc. reserves the right to incorporate our latest design and material changes without notice or obligation. Design features, materials of construction and dimensional data, as described in this bulletin, are provided for your information only and should not be relied upon unless confirmed in writing. Please contact your local sales representative for product availability in your region. For more information, visit www.spxflow.com.

The green " » " is a trademark of SPX FLOW, Inc.

Universal 3

SEAL KIT REFERENCE CHART



Waukesha Cherry-Burrell®



MODEL: 320



Single Mechanical Seal



Double Mechanical Seal

Abbreviation Key:
 SM Single Mechanical
 DM Double Mechanical
 C Carbon
 SC Silicon Carbide
 TC Tungsten Carbide
 NF Narrow Face
 Inner = Product Side, Outer = Flush Side

| SEAL KIT DESCRIPTION | | STANDARD U3 SEAL ITEM NUMBERS | | | | | | | | | | | | | | | | |
|---|------------------------|-------------------------------|-----------------------|------------------------|----------------------------|------------------------------|------------------------------|-------------------------|-------------------------|---------------------|---------------------|------------------------------|--------------------------|-------------------------|-------------------------|-----------------|---------|---------|
| | | SEAL KIT COMPONENTS | | | | | | | | | | | | | | | | |
| | | 151 | 190 | 191 | 192 | 193 | 194 | 195 | 196 | 197 | 198 | 199 | 200 | 201 | 202 | 203 | 204 | |
| KIT PART NUMBER | O-RING, ADJUSTING RING | ADJUSTING RING | O-RING ADJUSTING RING | FLUSH-SIDE ROTARY SEAL | FLUSH-SIDE STATIONARY SEAL | O-RING FLUSH SIDE STATIONARY | WAVE SPRING | SEAL HOUSING BOLT DM | SEAL HOUSING DM | O-RING SEAL HOUSING | O-RING PRODUCT SIDE | PRODCUT SIDE STATIONARY SEAL | PRODUCT SIDE ROTARY SEAL | SEAL HOUSING BOLT SM | SEAL HOUSING SM | FLUSH EXTENSION | | |
| | | | | | | | | (NOT INCL. IN SEAL KIT) | (NOT INCL. IN SEAL KIT) | | | | | (NOT INCL. IN SEAL KIT) | (NOT INCL. IN SEAL KIT) | NPT | BSP | |
| KIT INCLUDES ROTOR NUT O-RINGS AND COVER GASKETS (NOT LISTED) | QTY 2/KIT | QTY 2/KIT | QTY 2/KIT | QTY 2/KIT | QTY 2/KIT | QTY 2/KIT | SM QTY 2/KIT DM QTY 4/KIT | QTY 8/KIT | QTY 2/KIT | QTY 2/KIT | QTY 4/KIT | QTY 2/KIT | QTY 2/KIT | QTY 8/KIT | QTY 2/KIT | QTY 4/KIT | | |
| SEAL KIT, SM, SC/C, FKM | 304137+ | | | | | | | 142500+ | | | | V70147 | 142492+ | 142498+ | 30-775 | 142504+ | | |
| SEAL KIT, SM, SC/C, EPDM | 304138+ | | | | | | | 142500+ | | | | E70147 | 142492+ | 142498+ | 30-775 | 142504+ | | |
| SEAL KIT, SM, SC/SC, FKM | 304140+ | | | | | | | 142500+ | | | | V70147 | 142493+ | 142498+ | 30-775 | 142504+ | | |
| SEAL KIT, SM, SC/SC, EPDM | 304141+ | | | | | | | 142500+ | | | | E70147 | 142493+ | 142498+ | 30-775 | 142504+ | | |
| SEAL KIT, SM, SC/TC, FKM | 304143+ | | | | | | | 142500+ | | | | V70147 | 142494+ | 142498+ | 30-775 | 142504+ | | |
| SEAL KIT, SM, SC/TC, EPDM | 304144+ | | | | | | | 142500+ | | | | E70147 | 142494+ | 142498+ | 30-775 | 142504+ | | |
| SEAL KIT, SM, SC/SC NF, FKM | 304149+ | | | | | | | 142500+ | | | | V70147 | 142496+ | 142498+ | 30-775 | 142504+ | | |
| SEAL KIT, SM, SC/SC NF, EPDM | 304150+ | | | | | | | 142500+ | | | | E70147 | 142496+ | 142498+ | 30-775 | 142504+ | | |
| SEAL KIT, SM, SC/TC NF, FKM | 304152+ | | | | | | | 142500+ | | | | V70147 | 142497+ | 142498+ | 30-775 | 142504+ | | |
| SEAL KIT, SM, SC/TC NF, EPDM | 304153+ | | | | | | | 142500+ | | | | E70147 | 142497+ | 142498+ | 30-775 | 142504+ | | |
| SEAL KIT, SM, TC/C, FKM | 304155+ | | | | | | | 142500+ | | | | V70147 | 142492+ | 142499+ | 30-775 | 142504+ | | |
| SEAL KIT, SM, TC/C, EPDM | 304156+ | | | | | | | 142500+ | | | | E70147 | 142492+ | 142499+ | 30-775 | 142504+ | | |
| SEAL KIT, SM, TC/SC, FKM | 304158+ | | | | | | | 142500+ | | | | V70147 | 142493+ | 142499+ | 30-775 | 142504+ | | |
| SEAL KIT, SM, TC/SC, EPDM | 304159+ | | | | | | | 142500+ | | | | E70147 | 142493+ | 142499+ | 30-775 | 142504+ | | |
| SEAL KIT, SM, TC/TC, FKM | 304161+ | | | | | | | 142500+ | | | | V70147 | 142494+ | 142499+ | 30-775 | 142504+ | | |
| SEAL KIT, SM, TC/TC, EPDM | 304162+ | | | | | | | 142500+ | | | | E70147 | 142494+ | 142499+ | 30-775 | 142504+ | | |
| SEAL KIT, SM, TC/SC NF, FKM | 304167+ | | | | | | | 142500+ | | | | V70147 | 142496+ | 142499+ | 30-775 | 142504+ | | |
| SEAL KIT, SM, TC/SC NF, EPDM | 304168+ | | | | | | | 142500+ | | | | E70147 | 142496+ | 142499+ | 30-775 | 142504+ | | |
| SEAL KIT, SM, TC/TC NF, FKM | 304170+ | | | | | | | 142500+ | | | | V70147 | 142497+ | 142499+ | 30-775 | 142504+ | | |
| SEAL KIT, SM, TC/TC NF, EPDM | 304171+ | | | | | | | 142500+ | | | | E70147 | 142497+ | 142499+ | 30-775 | 142504+ | | |
| SEAL KIT, DM, SC/C, FKM | 304447+ | V70149 | 142489+ | V70243 | 142490+ | 142491+ | V70158 | 142500+ | 30-725 | 142503+ | V70249 | V70247 | 142492+ | 142498+ | | | 141190+ | 141192+ |
| SEAL KIT, DM, SC/C, EPDM | 304448+ | E70149 | 142489+ | E70243 | 142490+ | 142491+ | E70158 | 142500+ | 30-725 | 142503+ | E70249 | E70247 | 142492+ | 142498+ | | | 141190+ | 141192+ |
| SEAL KIT, DM, SC/SC, FKM | 304451+ | V70149 | 142489+ | V70243 | 142490+ | 142491+ | V70158 | 142500+ | 30-725 | 142503+ | V70249 | V70247 | 142493+ | 142498+ | | | 141190+ | 141192+ |
| SEAL KIT, DM, SC/SC, EPDM | 304452+ | E70149 | 142489+ | E70243 | 142490+ | 142491+ | E70158 | 142500+ | 30-725 | 142503+ | E70249 | E70247 | 142493+ | 142498+ | | | 141190+ | 141192+ |
| SEAL KIT, DM, SC/TC, FKM | 304455+ | V70149 | 142489+ | V70243 | 142490+ | 142491+ | V70158 | 142500+ | 30-725 | 142503+ | V70249 | V70247 | 142494+ | 142498+ | | | 141190+ | 141192+ |
| SEAL KIT, DM, SC/TC, EPDM | 304456+ | E70149 | 142489+ | E70243 | 142490+ | 142491+ | E70158 | 142500+ | 30-725 | 142503+ | E70249 | E70247 | 142494+ | 142498+ | | | 141190+ | 141192+ |
| SEAL KIT, DM, SC/SC NF, FKM | 304463+ | V70149 | 142489+ | V70243 | 142490+ | 142491+ | V70158 | 142500+ | 30-725 | 142503+ | V70249 | V70247 | 142496+ | 142498+ | | | 141190+ | 141192+ |
| SEAL KIT, DM, SC/SC NF, EPDM | 304464+ | E70149 | 142489+ | E70243 | 142490+ | 142491+ | E70158 | 142500+ | 30-725 | 142503+ | E70249 | E70247 | 142496+ | 142498+ | | | 141190+ | 141192+ |
| SEAL KIT, DM, SC/TC NF, FKM | 304467+ | V70149 | 142489+ | V70243 | 142490+ | 142491+ | V70158 | 142500+ | 30-725 | 142503+ | V70249 | V70247 | 142497+ | 142498+ | | | 141190+ | 141192+ |
| SEAL KIT, DM, SC/TC NF, EPDM | 304468+ | E70149 | 142489+ | E70243 | 142490+ | 142491+ | E70158 | 142500+ | 30-725 | 142503+ | E70249 | E70247 | 142497+ | 142498+ | | | 141190+ | 141192+ |
| SEAL KIT, DM, TC/C, FKM | 304471+ | V70149 | 142489+ | V70243 | 142490+ | 142491+ | V70158 | 142500+ | 30-725 | 142503+ | V70249 | V70247 | 142492+ | 142499+ | | | 141190+ | 141192+ |
| SEAL KIT, DM, TC/C, EPDM | 304472+ | E70149 | 142489+ | E70243 | 142490+ | 142491+ | E70158 | 142500+ | 30-725 | 142503+ | E70249 | E70247 | 142492+ | 142499+ | | | 141190+ | 141192+ |
| SEAL KIT, DM, TC/SC, FKM | 304475+ | V70149 | 142489+ | V70243 | 142490+ | 142491+ | V70158 | 142500+ | 30-725 | 142503+ | V70249 | V70247 | 142493+ | 142499+ | | | 141190+ | 141192+ |
| SEAL KIT, DM, TC/SC, EPDM | 304476+ | E70149 | 142489+ | E70243 | 142490+ | 142491+ | E70158 | 142500+ | 30-725 | 142503+ | E70249 | E70247 | 142493+ | 142499+ | | | 141190+ | 141192+ |
| SEAL KIT, DM, TC/TC, FKM | 304479+ | V70149 | 142489+ | V70243 | 142490+ | 142491+ | V70158 | 142500+ | 30-725 | 142503+ | V70249 | V70247 | 142494+ | 142499+ | | | 141190+ | 141192+ |
| SEAL KIT, DM, TC/TC, EPDM | 304480+ | E70149 | 142489+ | E70243 | 142490+ | 142491+ | E70158 | 142500+ | 30-725 | 142503+ | E70249 | E70247 | 142494+ | 142499+ | | | 141190+ | 141192+ |
| SEAL KIT, DM, TC/SC NF, FKM | 304487+ | V70149 | 142489+ | V70243 | 142490+ | 142491+ | V70158 | 142500+ | 30-725 | 142503+ | V70249 | V70247 | 142496+ | 142499+ | | | 141190+ | 141192+ |
| SEAL KIT, DM, TC/SC NF, EPDM | 304488+ | E70149 | 142489+ | E70243 | 142490+ | 142491+ | E70158 | 142500+ | 30-725 | 142503+ | E70249 | E70247 | 142496+ | 142499+ | | | 141190+ | 141192+ |
| SEAL KIT, DM, TC/TC NF, FKM | 304491+ | V70149 | 142489+ | V70243 | 142490+ | 142491+ | V70158 | 142500+ | 30-725 | 142503+ | V70249 | V70247 | 142497+ | 142499+ | | | 141190+ | 141192+ |
| SEAL KIT, DM, TC/TC NF, EPDM | 304492+ | E70149 | 142489+ | E70243 | 142490+ | 142491+ | E70158 | 142500+ | 30-725 | 142503+ | E70249 | E70247 | 142497+ | 142499+ | | | 141190+ | 141192+ |

Additional seal kit options available, contact customer service.

SPX FLOW, Inc. reserves the right to incorporate our latest design and material changes without notice or obligation. Design features, materials of construction and dimensional data, as described in this bulletin, are provided for your information only and should not be relied upon unless confirmed in writing. Please contact your local sales representative for product availability in your region. For more information, visit www.spxflow.com.

The green " » " is a trademark of SPX FLOW, Inc.