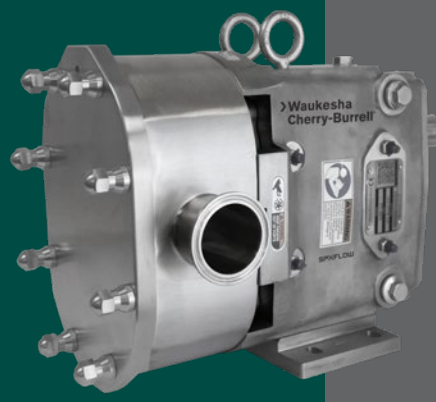


Universal 3

SEAL KIT REFERENCE CHART



Waukesha Cherry-Burrell®



MODELS: 045, 060, 130



Single Mechanical Seal



Double Mechanical Seal

Abbreviation Key:
 SM Single Mechanical
 DM Double Mechanical
 C Carbon
 SC Silicon Carbide
 TC Tungsten Carbide
 NF Narrow Face
 Inner = Product Side, Outer = Flush Side

SEAL KIT DESCRIPTION		STANDARD U3 SEAL ITEM NUMBERS																
		SEAL KIT COMPONENTS																
		151	190	191	192	193	194	195	196	197	198	199	200	201	202	203	204	
KIT PART NUMBER	O-RING ADJUSTING RING	ADJUSTING RING	O-RING ADJUSTING RING	FLUSH-SIDE ROTARY SEAL	FLUSH-SIDE STATIONARY SEAL	O-RING FLUSH SIDE STATIONARY	WAVE SPRING	SEAL HOUSING BOLT DM	SEAL HOUSING DM	O-RING SEAL HOUSING	O-RING PRODUCT SIDE	PRODCUT SIDE STATIONARY SEAL	PRODUCT SIDE ROTARY SEAL	SEAL HOUSING BOLT SM	SEAL HOUSING SM	FLUSH EXTENSION		
	QTY 2/KIT	QTY 2/KIT	QTY 2/KIT	QTY 2/KIT	QTY 2/KIT	QTY 2/KIT	SM QTY 2/KIT DM QTY 4/KIT	QTY 8/KIT (NOT INCL. IN SEAL KIT)	QTY 2/KIT (NOT INCL. IN SEAL KIT)	QTY 2/KIT	QTY 4/KIT	QTY 2/KIT	QTY 2/KIT	QTY 8/KIT (NOT INCL. IN SEAL KIT)	QTY 2/KIT (NOT INCL. IN SEAL KIT)	NPT	BSP	
SEAL KIT, SM, SC/C, FKM	304029+							142484+				V70147	142476+	142482+	30-741	142488+		
SEAL KIT, SM, SC/C, EPDM	304030+							142484+				E70147	142476+	142482+	30-741	142488+		
SEAL KIT, SM, SC/SC, FKM	304032+							142484+				V70147	142477+	142482+	30-741	142488+		
SEAL KIT, SM, SC/SC, EPDM	304033+							142484+				E70147	142477+	142482+	30-741	142488+		
SEAL KIT, SM, SC/TC, FKM	304035+							142484+				V70147	142477+	142482+	30-741	142488+		
SEAL KIT, SM, SC/TC, EPDM	304036+							142484+				E70147	142477+	142482+	30-741	142488+		
SEAL KIT, SM, SC/SC NF, FKM	304041+							142484+				V70147	142477+	142482+	30-741	142488+		
SEAL KIT, SM, SC/SC NF, EPDM	304042+							142484+				E70147	142477+	142482+	30-741	142488+		
SEAL KIT, SM, SC/TC NF, FKM	304044+							142484+				V70147	142477+	142482+	30-741	142488+		
SEAL KIT, SM, SC/TC NF, EPDM	304045+							142484+				E70147	142477+	142482+	30-741	142488+		
SEAL KIT, SM, TC/C, FKM	304047+							142484+				V70147	142476+	142483+	30-741	142488+		
SEAL KIT, SM, TC/C, EPDM	304048+							142484+				E70147	142476+	142483+	30-741	142488+		
SEAL KIT, SM, TC/SC, FKM	304050+							142484+				V70147	142477+	142483+	30-741	142488+		
SEAL KIT, SM, TC/SC, EPDM	304051+							142484+				E70147	142477+	142483+	30-741	142488+		
SEAL KIT, SM, TC/TC, FKM	304053+							142484+				V70147	142478+	142483+	30-741	142488+		
SEAL KIT, SM, TC/TC, EPDM	304054+							142484+				E70147	142478+	142483+	30-741	142488+		
SEAL KIT, SM, TC/SC NF, FKM	304059+							142484+				V70147	142480+	142483+	30-741	142488+		
SEAL KIT, SM, TC/SC NF, EPDM	304060+							142484+				E70147	142480+	142483+	30-741	142488+		
SEAL KIT, SM, TC/TC NF, FKM	304062+							142484+				V70147	142481+	142483+	30-741	142488+		
SEAL KIT, SM, TC/TC NF, EPDM	304063+							142484+				E70147	142481+	142483+	30-741	142488+		
SEAL KIT, DM, SC/C, FKM	304303+	V70031	142473+	V70144	142474+	142475+	V70147	142484+	30-725	142487+	V70041	V70147	142476+	142482+			141190+	141192+
SEAL KIT, DM, SC/C, EPDM	304304+	E70031	142473+	E70144	142474+	142475+	E70147	142484+	30-725	142487+	E70041	E70147	142476+	142482+			141190+	141192+
SEAL KIT, DM, SC/SC, FKM	304307+	V70031	142473+	V70144	142474+	142475+	V70147	142484+	30-725	142487+	V70041	V70147	142477+	142482+			141190+	141192+
SEAL KIT, DM, SC/SC, EPDM	304308+	E70031	142473+	E70144	142474+	142475+	E70147	142484+	30-725	142487+	E70041	E70147	142477+	142482+			141190+	141192+
SEAL KIT, DM, SC/TC, FKM	304311+	V70031	142473+	V70144	142474+	142475+	V70147	142484+	30-725	142487+	V70041	V70147	142477+	142482+			141190+	141192+
SEAL KIT, DM, SC/TC, EPDM	304312+	E70031	142473+	E70144	142474+	142475+	E70147	142484+	30-725	142487+	E70041	E70147	142477+	142482+			141190+	141192+
SEAL KIT, DM, SC/SC NF, FKM	304319+	V70031	142473+	V70144	142474+	142475+	V70147	142484+	30-725	142487+	V70041	V70147	142477+	142482+			141190+	141192+
SEAL KIT, DM, SC/ SC NF, EPDM	304320+	E70031	142473+	E70144	142474+	142475+	E70147	142484+	30-725	142487+	E70041	E70147	142477+	142482+			141190+	141192+
SEAL KIT, DM, SC/TC NF, FKM	304323+	V70031	142473+	V70144	142474+	142475+	V70147	142484+	30-725	142487+	V70041	V70147	142477+	142482+			141190+	141192+
SEAL KIT, DM, SC/ TC NF, EPDM	304324+	E70031	142473+	E70144	142474+	142475+	E70147	142484+	30-725	142487+	E70041	E70147	142477+	142482+			141190+	141192+
SEAL KIT, DM, TC/C, FKM	304327+	V70031	142473+	V70144	142474+	142475+	V70147	142484+	30-725	142487+	V70041	V70147	142476+	142483+			141190+	141192+
SEAL KIT, DM, TC/C, EPDM	304328+	E70031	142473+	E70144	142474+	142475+	E70147	142484+	30-725	142487+	E70041	E70147	142476+	142483+			141190+	141192+
SEAL KIT, DM, TC/SC, FKM	304331+	V70031	142473+	V70144	142474+	142475+	V70147	142484+	30-725	142487+	V70041	V70147	142477+	142483+			141190+	141192+
SEAL KIT, DM, TC/SC, EPDM	304332+	E70031	142473+	E70144	142474+	142475+	E70147	142484+	30-725	142487+	E70041	E70147	142477+	142483+			141190+	141192+
SEAL KIT, DM, TC/TC, FKM	304335+	V70031	142473+	V70144	142474+	142475+	V70147	142484+	30-725	142487+	V70041	V70147	142478+	142483+			141190+	141192+
SEAL KIT, DM, TC/TC, EPDM	304336+	E70031	142473+	E70144	142474+	142475+	E70147	142484+	30-725	142487+	E70041	E70147	142478+	142483+			141190+	141192+
SEAL KIT, DM, TC/SC NF, FKM	304343+	V70031	142473+	V70144	142474+	142475+	V70147	142484+	30-725	142487+	V70041	V70147	142480+	142483+			141190+	141192+
SEAL KIT, DM, TC/SC NF, EPDM	304344+	E70031	142473+	E70144	142474+	142475+	E70147	142484+	30-725	142487+	E70041	E70147	142480+	142483+			141190+	141192+
SEAL KIT, DM, TC/TC NF, FKM	304347+	V70031	142473+	V70144	142474+	142475+	V70147	142484+	30-725	142487+	V70041	V70147	142481+	142483+			141190+	141192+
SEAL KIT, DM, TC/TC NF, EPDM	304348+	E70031	142473+	E70144	142474+	142475+	E70147	142484+	30-725	142487+	E70041	E70147	142481+	142483+			141190+	141192+

Additional seal kit options available, contact customer service.

SPX FLOW, Inc. reserves the right to incorporate our latest design and material changes without notice or obligation. Design features, materials of construction and dimensional data, as described in this bulletin, are provided for your information only and should not be relied upon unless confirmed in writing. Please contact your local sales representative for product availability in your region. For more information, visit www.spxfllow.com.

The green " > " is a trademark of SPX FLOW, Inc.