

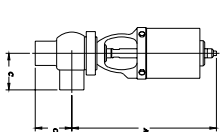
VALVE DIMENSIONS BY CONNECTOR TYPE

| VALVE SIZE | A | B | C BUTT WELD LINES | C LINES | D | E |
|------------|-------|------|-------------------|---------|------|------|
| 1 | 12.56 | 2.68 | 2.00 | 3.75 | 3.12 | 2.61 |
| 1 1/2 | 12.56 | 2.68 | 2.25 | 3.19 | 2.75 | 2.46 |
| 2 | 12.56 | 2.68 | 2.50 | 2.75 | 2.50 | 2.25 |
| 2 1/2 | 12.56 | 2.68 | 2.75 | 2.25 | 2.25 | 2.00 |
| 3 | 12.56 | 4.19 | 3.50 | 4.47 | 3.75 | 1.80 |
| 4 | 12.56 | 5.11 | 3.88 | 5.22 | 4.50 | 2.21 |

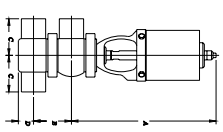
The "A" dimension shown is for a 4-hole (70°) flange connection.
 For 2-hole (125°) flange connection add 1.31 inches (33.27mm) to the "A" dimension.
 For 6-hole (125°) flange connection add 3.07 inches (77.96mm) to the "A" dimension.
 For the control leg option add 3.29 inches (83.6mm) to the "A" dimension.

MANIFOLDING VALVE BODY DIMENSIONS

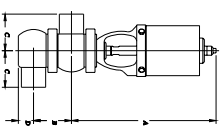
| VALVE SIZE | A | B | C BUTT WELD |
|------------|-------|------|-------------|
| 1 | 12.56 | 1.96 | 4.00 |
| 1 1/2 | 12.56 | 1.96 | 4.00 |
| 2 | 12.56 | 2.46 | 4.00 |
| 3 | 12.56 | 2.64 | 4.00 |
| 4 | 12.56 | 3.11 | 6.00 |



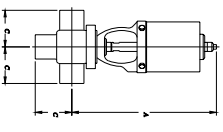
MODEL W61-T



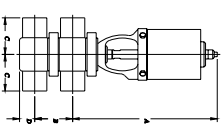
MODEL W61-TD



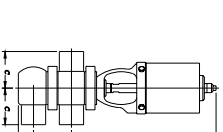
MODEL W61-TS



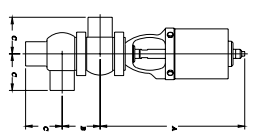
MODEL W61-C



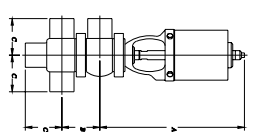
MODEL W61-CD



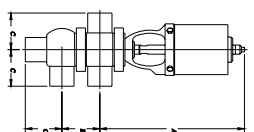
MODEL W61-CS



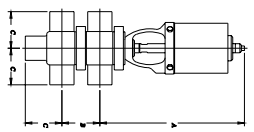
MODEL W62-T



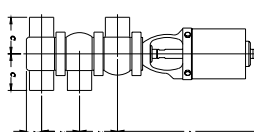
MODEL W62-TD



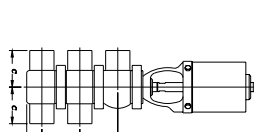
MODEL W62-TS



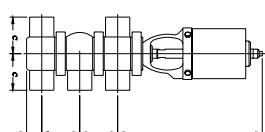
MODEL W62-CC



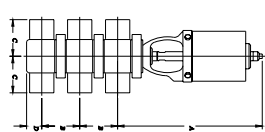
MODEL W62-TTD



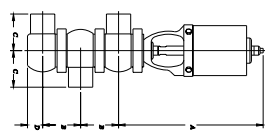
MODEL W62-TCD



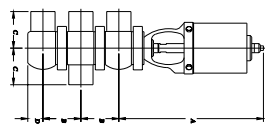
MODEL W62-CCD



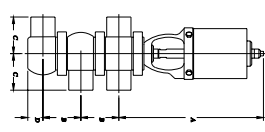
MODEL W62-TTS



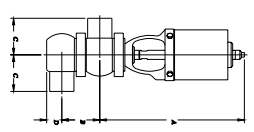
MODEL W62-TCS



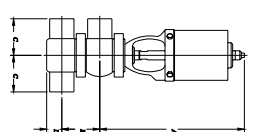
MODEL W62-CTS



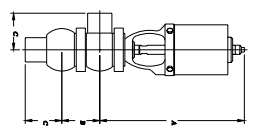
MODEL W62-CCS



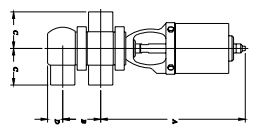
MODEL W63-T



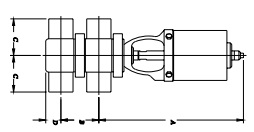
MODEL W63-TD



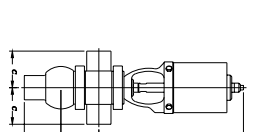
MODEL W63-TS



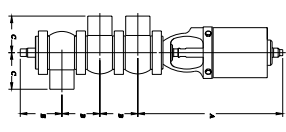
MODEL W63-CS



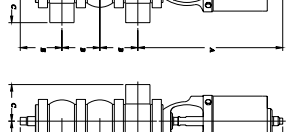
MODEL W63-CD



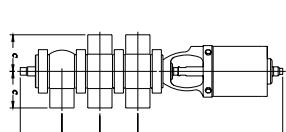
MODEL W63-CS



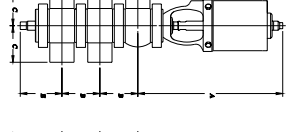
MODEL W65-T



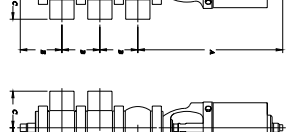
MODEL W65-TD



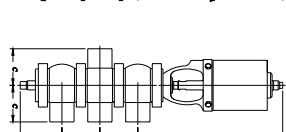
MODEL W65-TS



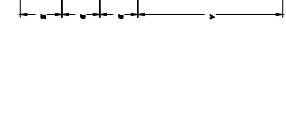
MODEL W65-CT



MODEL W65-TCC



MODEL W65-TTC



MODEL W65-TCT