

ParaTube[®] Double Tube Tubular Heat Exchangers - Regenerator Design

FOR SANITARY APPLICATIONS

Double tube heat exchangers consist of two concentrically positioned tubes.

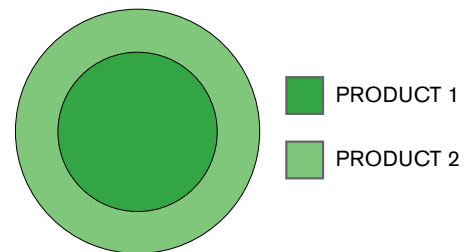
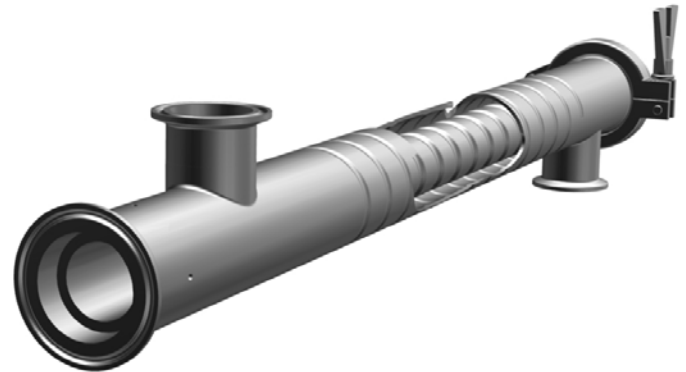
There are o-rings on one side and a clamp for disassembly on the opposite side.

Double tube heat exchangers are suitable for heating and cooling of low-medium flow rates of low viscous products. Due to its special design, this double tube is used as a direct regenerator, with direct product-to-product heat recovery for energy savings.

Because of the availability of a range of inner tube and outer tube diameter combinations, this double tube design is capable of direct regeneration of a range of product flow rates.

The construction of the double tube regenerator design can be fully disassembled and cleaned on both sides. This design allows for processing products with small and flexible particles (fibres/pulp).

The double tube type regenerator design can be used in combination with other tubular heat exchanger types.



MAIN FEATURES

- Thermal expansion devices are not required. CDT/R has free expansion.
- Flexible arrangement. Modules are connected on inner tube side by means of bends and on annular space side by means of fitting

Full inspection on product side

- On inner tube by removing bends between modules
- On annular space by removing inner tube from outer tube

STANDARD MATERIALS

AISI 316 (1.4401) /316L (1.4404)

Others available on request.

STANDARD FINISH

PRODUCT SIDE: 2B finish/polished

WORKING CONDITIONS

DESIGN TEMPERATURE: Up to 482°F (250°C)

DESIGN PRESSURE: Up to 1087 psi (75 bar)

CONNECTIONS

PRODUCT SIDE

Clamp fittings are supplied as standard.

Other available on request for some models.

ANNULAR SIDE

Clamp fittings are supplied as standard.

Other available on request for some models.

NOMENCLATURE

CDT/R-1-2-LM - Corrugated Double Tube Type Regenerator Design

1: Inner tube outer diameter (mm)

2: Outer tube outer diameter (mm)

L: Tubes length (m)

PRODUCT RANGE

OUTER TUBE outer diameters

From 1.2 in to 5.5 in (30mm to 139,7mm)

TUBES LENGTH

Standard supply: 10 ft - 20 ft (3 m - 6 m)

Other available on request.

INNER TUBES outer diameters

From 0.7in to 4 in (18mm to 101,6mm)

CORRUGATION

All models can be supplied with corrugated or smooth tubes.

CERTIFICATIONS

In compliance with European Pressure Equipment Directive 2014/68/EU.

OTHER CERTIFICATES available on request.

Based in Charlotte, North Carolina, SPX FLOW, Inc. (NYSE: FLOW) is a multi-industry manufacturing leader. For more information, please visit www.spxflow.com

SPXFLOW

SPX FLOW, Inc. reserves the right to incorporate our latest design and material changes without notice or obligation.

Design features, materials of construction, dimensional data and certifications as described in this bulletin, are provided for your information only and should not be relied upon unless confirmed in writing. Please contact your local sales representative for product availability in your region.

For more information visit www.spxflow.com.

The green "x" and "x" are trademarks of SPX FLOW, Inc.

APV_HE-Doubletube-DTR_FLR_US

Version 04/2020

Identification Number: APV-1231-US

SPX FLOW No.666 FengJin Road, XiDu Industrial Park
Feng Xian District, Shanghai, 201401 PR China
P: +86 21 6715 8181

SPX FLOW ul. Stanisława Jana Rolbieskiego 2
85-862 Bydgoszcz Poland
P: +48 52 566 76 00

E: leads@spxflowleads.com

COPYRIGHT © 2020 SPX FLOW, Inc.