

GS Logic

Control System

The GS Logic system is designed to control, record and document important parameters regarding the process.

Consistency In Product

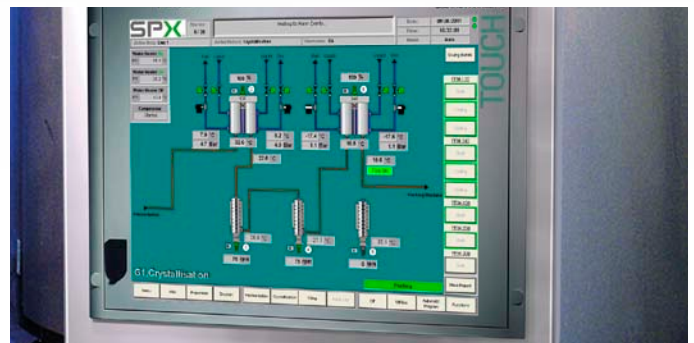
The GS Logic helps create a consistent process environment to ensure that the product is manufactured in the same way every time. When the process variables have been fine-tuned for optimum results, the end product will always have the same quality.

System Flexibility

With the GS Logic system, production can easily be changed by altering a recipe or entering new production alternatives rather than reprogramming. Monitoring and controlling the system can be done from one or several operating stations for maximum flexibility. GS Logic also has the flexibility to be either a stand-alone or a client-server solution. In the client-server solution the process can be monitored from various locations, and connections can be made through a local network and/or internet.

Production Economy

Long-term savings can be obtained with GS Logic because of the added control over production. Savings are recognized through minimal product loss and energy use. GS Logic always operates and monitors the process in the same way during each production run. Hereby you will avoid overfilling of tanks, unwanted mixing and other errors resulting in product loss and excess energy consumption. The documentation of the process is an important feature of the GS Logic system. Because of documentation, problems in the production process can be identified and corrected very quickly. This



not only helps to save money in the process by getting back on line quickly, but also ensures product quality and consistency.

Functionalities

Semi- and full-automatic batch, production and CIP programmes and simple traceability.

Recipe Handling

Storing of batch and production parameters.

Reports

- Production Reports – generated on demand or automatically
- Batch Reports – generated automatically
- CIP Reports – generated automatically

Equipment (Depending On Version)

PC with monitor, touch screen operator panel, communication card, color printer, PC control software, GS Logic software, reporting software and battery backup, modem for remote assistance.

Easy To Use

The fully automatic production programme ensures easy handling when starting, running and ending the production. Mimic diagrams are included to give a fast and easy overview of the system. Icons resemble areas of the actual process with tanks, pipes, valves, pumps and other processing equipment. With GS Logic you can shift from one image to another, following the product through the production process.

Information

The automation system provides relevant data and production information in the form of reports, statistics, analyses, etc. These data can help improve productivity and allow for more precise management decisions. One important example is the historical trends report that helps monitor changes and reactions in the process over time.

Remote Assistance

GS specialists are able to monitor your process on-line via a modem or an internet connection.

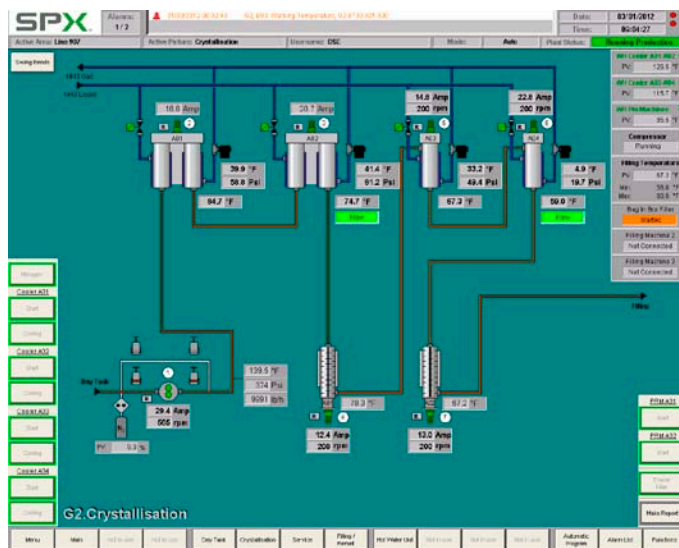
The GS Logic exists in three versions: GS Logic Basic, GS Logic Advanced and GS Logic Professional.

	GS LOGIC BASIC	GS LOGIC ADVANCED	GS LOGIC PROFESSIONAL
SEMI-AUTOMATIC CONTROL OF THE PROCESS	▪	▪	▪
SOFTWARE CONTROLLERS	▪	▪	▪
PROFIBUS OR DEVICENET	▪	▪	▪
30 RECIPES	▪	▪	
1,000 RECIPES			▪
FULL-AUTOMATIC PROGRAMMES FOR THE PROCESS		▪	
SCADA SYSTEM			▪
SERVER PC WITH SQL DATABASE			▪
HISTORICAL DATA SAVED FOR 12 MONTHS			▪
WEB-BASED RECIPE EDITOR			▪
WEB-BASED REPORT SYSTEM			▪
REMOTE ASSISTANCE FOR THE PLC	▪	▪	▪

Graphic Display

The graphic displays give the user an immediate and precise overview of the process, due to the color-animated items.

All relevant values and process states are presented on the screen. All operations to the process can be preformed directly from the screen.



Integrated Web Interface

(Only for GS Logic Professional)

The system offers editing of recipes from an ordinary browser. Furthermore, it allows the user to generate detailed batch, production and CIP reports.

The tracing feature provides information about every used component of a specific batch. This is essential in revealing the source of a faulted product.



Getzville, NY 14068, USA: P: +1 716 692 3000 E: tf.getzville.sales@spx.com

For more information about our worldwide locations, approvals, certifications, and local representatives, please visit www.spx.com.

SPX Corporation reserves the right to incorporate our latest design and material changes without notice or obligation. Design features, materials of construction and dimensional data, as described in this bulletin, are provided for your information only and should not be relied upon unless confirmed in writing.