

## APV Homogeniser PLC Control Panel

SPX FLOW's APV® Gaulin® and Rannie® brand Homogenisers are now available with standard control panels based on PLC control and operator interface via touchscreen.

The new panel provides an easy to use operator interface which provides local or remote operation of your homogeniser. All homogeniser controls, displays and alarms are contained in the standard pre-configured solution.

The control solution can be supplied either as a stand-alone panel or combined with a motor starter panel.

### SOLUTION BENEFITS

- Easy to install - Pre-configured and factory tested standard program with no on-site programming required
- Improved control of operating parameters
- Enhanced functionality compared to traditional relay controls
- Easy communication to plant control system

### SPECIFICATIONS

#### Standard Features

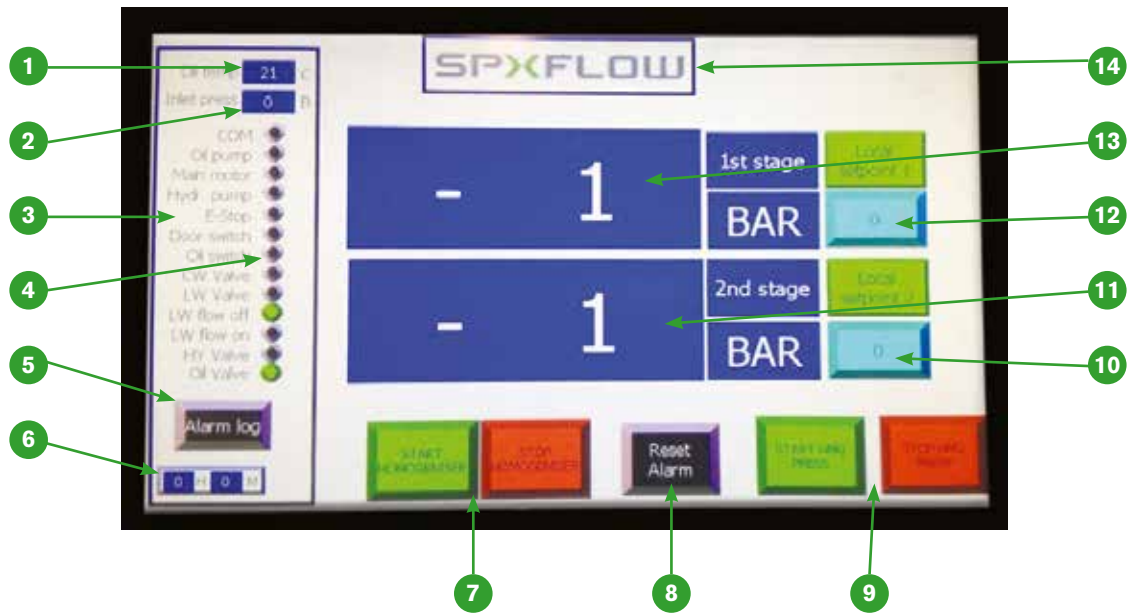
- Allen-Bradley® PLC
- Allen-Bradley® 7" Touchscreen HMI
- Modbus communication
- Power Supply: 85-264 V AC, output 24 V DC
- Emergency Stop switch
- Safety Circuit
- Mounted in a stainless steel cabinet
- Typical panel dimensions: 60 x 20 x 60 cm

#### Optional Features

- Profibus® or Profinet® communication
- Motor starter(s) and/or frequency convertor in combined stainless steel cabinet



## OVERVIEW OF OPERATOR INTERFACE FUNCTIONS



- |   |   |   |
|---|---|---|
| <b>1</b> Oil Temperature                                | <b>6</b> Hour Counter                   | <b>11</b> 2nd Stage Pressure            |
| <b>2</b> Inlet Pressure (where fitted)                  | <b>7</b> Start/Stop Homogeniser*        | <b>12</b> 1st Stage Pressure Set Point* |
| <b>3</b> Status Information                             | <b>8</b> Alarm Reset                    | <b>13</b> 1st Stage Pressure            |
| <b>4</b> Function Indications (Black = off, Green = on) | <b>9</b> Start/Stop Hydraulics *        | <b>14</b> Screen Selection              |
| <b>5</b> Alarm Log and Status Light                     | <b>10</b> 2nd Stage Pressure Set Point* |   |

\* Only visible when local control is selected

## SPX FLOW – A LEADER IN HOMOGENISATION

When it comes to homogenisation, SPX FLOW has a long history through its APV® Rannie® and Gaulin® series. Its expertise in this area of food and beverage processing can help ensure high-quality results for the most complex emulsions. SPX FLOW has a large portfolio of homogenisers for applications ranging from pilot plant to large scale production. Solutions are customised to match your specific processing needs. The art of producing efficient, reliable and consistent homogenisation results is based on an in-depth understanding of emulsions and production goals whatever the application. SPX FLOW's history with this technology makes it an ideal partner to help solve your most difficult dispersion challenges.

Based in Charlotte, North Carolina, SPX FLOW, Inc. (NYSE: FLOW) is a multi-industry manufacturing leader. For more information, please visit [www.spxflow.com](http://www.spxflow.com)



SPX FLOW TECHNOLOGY Oestmarken 7, 2860 Soeborg, Denmark

P: + 45 70 278 222 F: 45 70 278 223 E: [answers@apv.com](mailto:answers@apv.com)

SPX FLOW, Inc. reserves the right to incorporate our latest design and material changes without notice or obligation.

Design features, materials of construction and dimensional data, as described in this bulletin, are provided for your information only and should not be relied upon unless confirmed in writing. Please contact your local sales representative for product availability in your region. For more information visit [www.spxflow.com](http://www.spxflow.com).

The green "s" and "x" are trademarks of SPX FLOW, Inc.

Allen-Bradley® is a trademark of Rockwell Automation Inc. / PROFIBUS® and PROFINET® are registered trademarks of PROFIBUS and PROFINET International (PI)

APV-3175-GB Version 01/2018 Issued 01/2018 COPYRIGHT © 2017 SPX FLOW, Inc.