

AquaT Silent Electric marine toilet

You need

- Stainless steel bolts: 3 pcs, 8 mm (5/16") diameter of length to suit the thickness of the mounting surface.
- Stainless steel nuts: 3 pcs preferably self-locking. If you do not use self-locking nuts you need to add locking compound on the screws-/nuts.
- Stainless steel washers: 3 pcs.
- Drill: Diameter 9 mm.
- Silicone sealant, white.

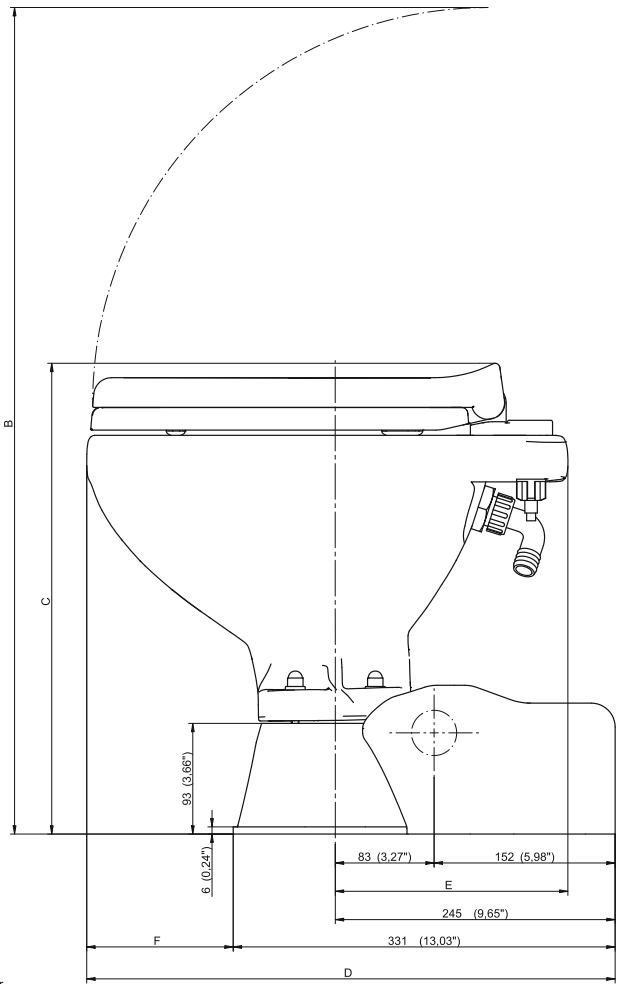
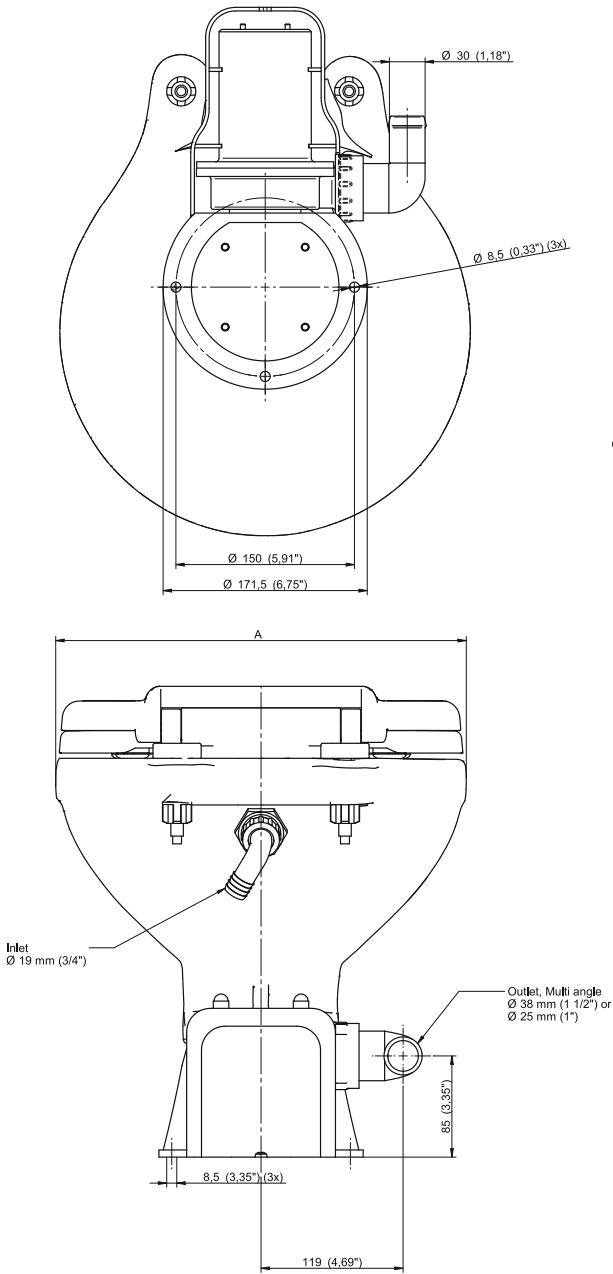
Dimensions & Weight

AquaT Silent Electric Toilets

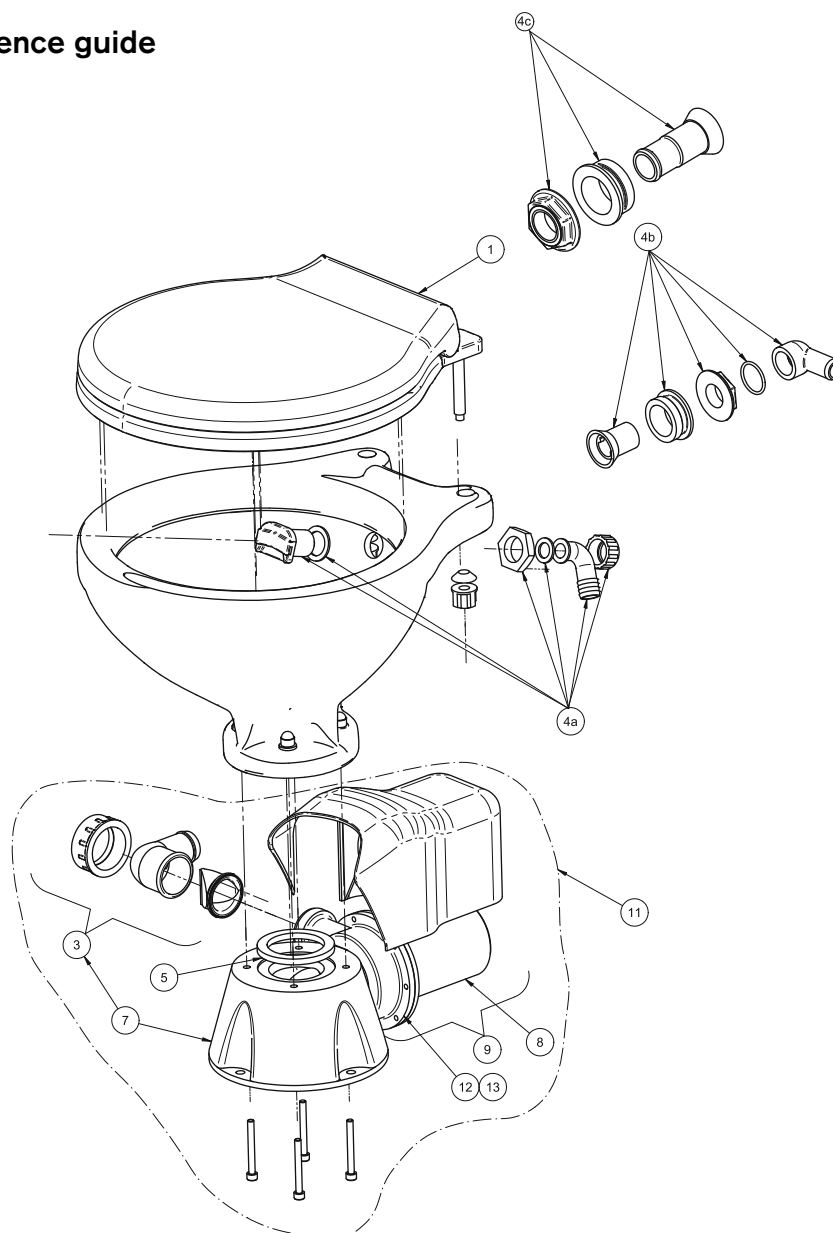
Part. nr.	Description	Weight		A	B	C	D	E	F	mm/ inch
80-47231-01	AquaT Silent Electric Compact, 12V	9,2	kg	340	695	395	441	215	110	mm
80-47231-02	AquaT Silent Electric Compact, 24V	20	lbs	13,39	27,36	15,55	17,36	8,46	4,33	inch
80-47232-01	AquaT Silent Electric Comfort, 12V	10,8	kg	365	770	375	456	260	125	mm
80-47232-02	AquaT Silent Electric Comfort, 24V	24	lbs	14,37	30,31	14,76	17,95	10,24	4,92	inch

If you do not use self-locking nuts, you will need some nutlocking compound.

- Put the toilet in the selected position. Using the holes in the base as a guide, mark the positions for the 3 bolt holes on the mounting surface. Remove the toilet and drill 3 vertical holes, with a diameter of 9 mm, through the mounting surface.
- Apply the white silicone sealant to the outer rim of the bottom base.
- Put the toilets on its place and tighten the fastenings securely. If you are not using self-locking nuts, use nutlocking compound.
- Use the sealant around the base, towards the floor.



## Spare Parts & Reference guide



Pos.	Description	Part No.
1	Plastic Seat, Compact	81-47241-04
	Plastic Seat, Comfort	81-47241-05
3	Outlet elbow 1 1/2", Silent	81-47273-01
	Outlet elbow 1", Silent	81-47273-02
4a	Intake elbow	81-47640-01
4b	Intake elbow	81-47246-01
4c	Intake elbow, Premium	81-47246-03
5	Bowl gasket	81-47274-01
7	Base group	81-47247-01
8	Motor group 12V	81-47248-01
	Motor group 24V	81-47248-02
9	Flush 3.5 Pump 12V	10-13399-05
	Flush 3.5 Pump 24V	10-13399-06
10	Control Panel 12V & 24V	81-36105-01
11	Conversion kit Pump Assembly 12V	81-47240-01
	Conversion kit Pump Assembly 24V	81-47240-02
12	Mechanical seal with spring	81-47504-01
13	Impeller with circlip	81-47519