

TIGEX 150 - Draft Regulator

Installation instruction

0010836

Flue draught regulators are intended to ensure proper draft conditions and to reduce the risk of condensation in chimneys. The installer or property owner should confirm that the intended draft conditions are achieved. The Tigex 150 is designed to seal tight, preventing leakage of smoke gases during overpressure, which usually occurs during burner start up. The Tigex 150 is mounted by using different adapters, which include solutions for round single skin flue pipes with external Ø 5, 6, and 7 inches. The adapter is to be sealed to the flue pipe with boiler putty or equivalent.

Mounting

Tigex 150 is to be installed with the axel in horizontal position and the housing in vertical position (Fig 1). Check that the draft regulator door/flap moves freely to a fully opened position. The flap shall not open into the smoke gas flow of the flue pipe.

Fig. 1

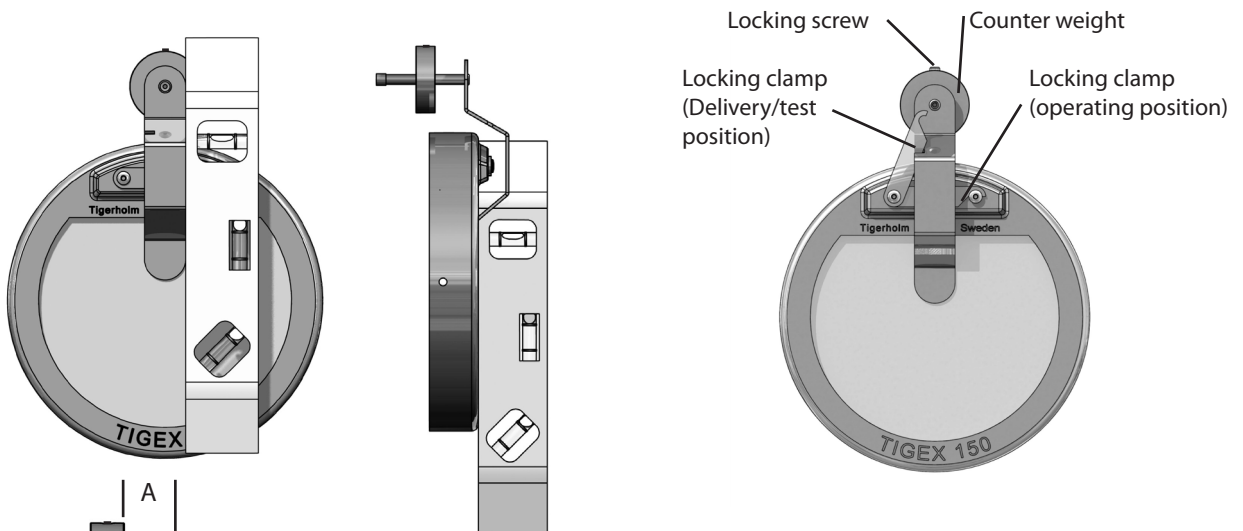
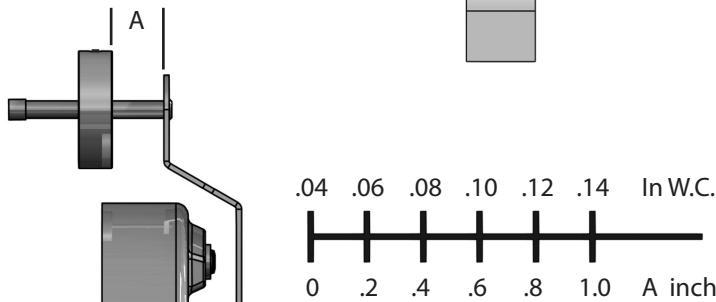


Fig. 2



General settings Static pressure:	
Oil boiler:	.04 In W.C.
Pellets boiler:	.06 In W.C.
Wood Boiler:	.07 - .10 In W.C.

Adjustment of Static pressure (Fig. 2)

Adjustment of the Static pressure which opens the flap is done by loosening the locking screw of the counter weight, moving the counter weight to the desired position indicated by the Inches Water Column (In W.C.) table. When the counter weight is in the correct position, tighten the locking screw and check the distance once more. As the values in the table are theoretical, the draft (negative pressure) shall be checked with a draft indicator. The standard factory setting is .06 In W.C.

Function

Rev. 150115 dm

The Tigex 150 will open to different degrees depending on the setting and the amount of draft in the chimney. The draft will vary depending on chimney design, weather conditions or if the burner is running or not. As draft conditions will vary considerably between different installations, it is necessary to determine the static pressure and need for ventilation on a case by case basis.

Important!

Please observe and comply with any local laws and regulations.