

## Control Top Cover & NEMA 6 Upgrade Options



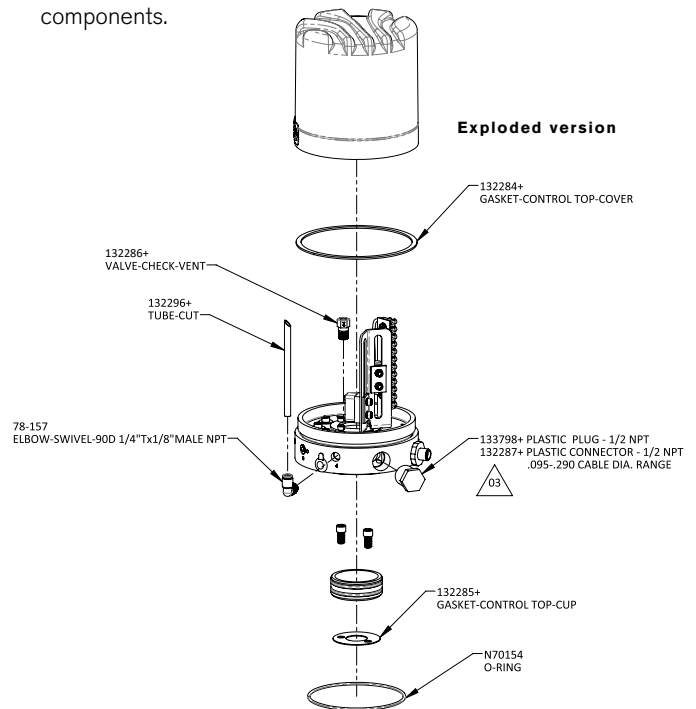
### CONTROL TOP COVER MATERIAL UPGRADE

**Part Number 133085+:** SPX FLOW is pleased to announce an upgrade to all Waukesha Cherry-Burrell (2) piece control tops. Effective immediately, all Waukesha Cherry-Burrell (2) piece control tops and spare covers will be supplied with a copolyester material clear cover which will directly replace the previously supplied clear acrylic cover at no additional cost. The copolyester cover will appear the same as the acrylic cover in every respect and will provide the following features and benefits:

- Improved chemical resistance
- Enhanced long term durability in washdown environments exposed to high heat and humidity
- Flexible and resilient under pressure

### NEMA 6 WASHDOWN UPGRADE OPTION

**NEMA 6 Kit : Part Number 132288+:** New and existing (2) piece Waukesha Cherry-Burrell control tops now have a NEMA 6 washdown rated upgrade option. This provides superior washdown protection to the standard NEMA 4X rating. The NEMA 6 option can be selected as an option on newly configured valves or can be quickly and easily added in the field to existing (2) piece control tops using a kit which contains all of the required components.



Based in Charlotte, North Carolina, SPX FLOW, Inc. (NYSE: FLOW) is a multi-industry manufacturing leader. For more information, please visit [www.spxflow.com](http://www.spxflow.com)

SPX FLOW 611 Sugar Creek Road Delavan, WI 53115  
P: (262) 728-1900 or (800) 252-5200 E: [wcb@spxflow.com](mailto:wcb@spxflow.com)

SPX FLOW, Inc. reserves the right to incorporate our latest design and material changes without notice or obligation.

Design features, materials of construction and dimensional data, as described in this bulletin, are provided for your information only and should not be relied upon unless confirmed in writing. Please contact your local sales representative for product availability in your region. For more information visit [www.spxflow.com](http://www.spxflow.com).

The green "s" and "x" are trademarks of SPX FLOW, Inc.

ISSUED 01/2018 FH-1804-US COPYRIGHT © 2018 SPX FLOW, Inc.