



# UPGRADE YOUR VERTICAL VOTATOR® II

Embrace the latest advancements for enhanced performance and efficiency.

Upgrade your Votator II Vertical Scraped Surface Heat Exchanger and enjoy all the benefits of the new and improved hydraulic lifting system with our simple retrofit conversion kits.

## Why Upgrade?

### Reduce downtime and increase flexibility

- Single or dual lift for inspection, cleaning or maintenance
- New blade alignment and spline tools for fast and accurate assembly
- New guidance system ensures smooth lifting and lowering

### Robust, reliable design and consistent performance

- Strengthened hydraulic power pack for dual lifts
- Two-point locking guidance system
- Heavy duty components ensure reliable operation

### Retrofit conversion kits

With a quick turnaround time, easy installation and minimal investment, our retrofit kits offer a convenient and cost-effective solution for maintaining system performance and reliability.

- Quick and easy implementation
- No need to replace existing equipment
- Existing components are reused where possible such as hydraulic systems
- Minimal investment for maximum productivity improvements
- Minimal disruption to your business operation

# FEATURES AND BENEFITS

## Greater flexibility for operating needs

The new design enables efficient access to single or twin cylinders for maintenance, cleaning or inspections.

## Robust and reliable

The system includes new alignment pins, guide rollers and a heavy duty guidance system to ensure reliable and repeatable operation.

## User friendly

New cone and spline alignment tools enable effective re-assembly operations and the controlled alignment ensures smooth lifting and lowering steps.

## Faster maintenance

The system is externally positioned onto the support column with hydraulic components visible and easily maintained, repaired, or replaced without impacting the heat exchanger or production performance.

## Improved turnaround times

Simultaneous dual shaft/cylinder access is now possible with the new dual foot plate and upgraded hydraulic power pack.

## Enhance your existing systems

Simple retrofit conversion kits are available to convert existing Votator II vertical systems.



**Robust dual cylinder foot assembly** - New heavy duty lifting foot includes tapered engagement pins and holding arms for secure shaft withdrawal



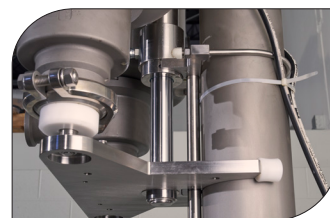
**Easy access inspection, cleaning and maintenance** - Ergonomically designed for adjustable and secure access to the mutator shaft, scraper blades and seal assembly.



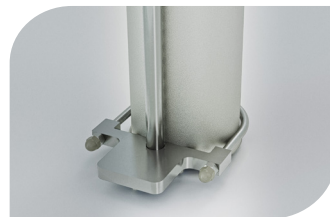
**Upgraded hydraulics for robust performance** - strengthened power pack, larger reservoir and new valves all externally mounted for easy access.



**Blade alignment tools** - new two piece wide-angled lightweight blade alignment cone folds the scraper blades inwards during shaft insertion mode



**New dynamic foot assembly for single or dual lift** - Foot is captured by both the guide rod and guide rollers for controlled vertical motion



**Controlled alignment** - two point locked guidance system with heavy duty guide rod ensures accurate alignment

# SPXFLOW®

SPX FLOW, Inc. reserves the right to incorporate our latest design and material changes without notice or obligation. Design features, materials of construction and dimensional data, as described in this bulletin, are provided for your information only and should not be relied upon unless confirmed in writing. Please contact your local sales representative for product availability in your region. The green " " is a trademark of SPX FLOW, Inc.

For more information, visit [www.spxflow.com](http://www.spxflow.com).

©2023 SPX FLOW, Inc.  
WCB\_Votator-II-Vertical-SSHE-Retrofit\_FLR\_GB

Version: 01/2023